

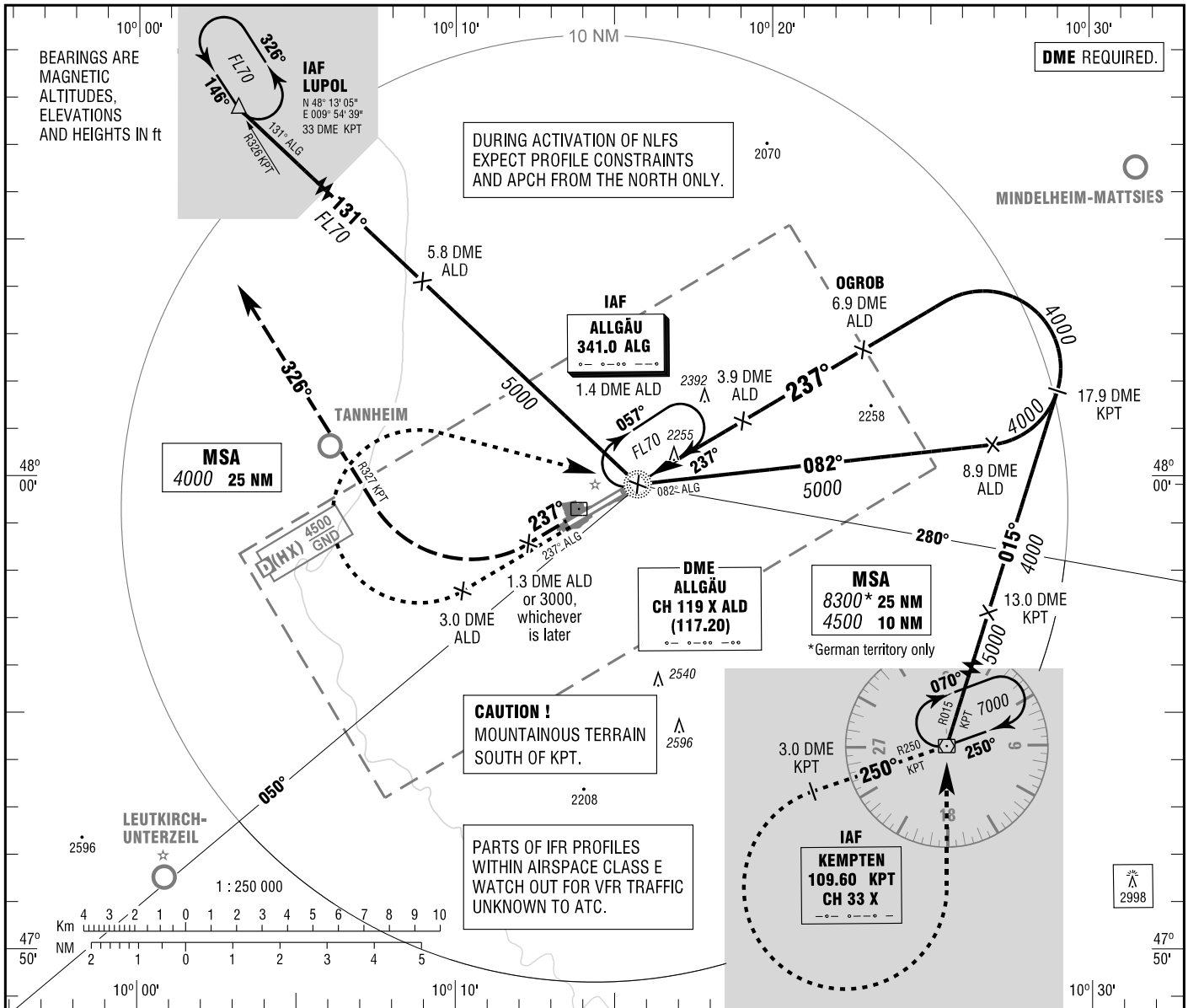
INSTRUMENT
APPROACH
CHART - ICAO

VAR 2° E

ELEV 2079
OCH RELATED TO
THR 24 ELEV 2053

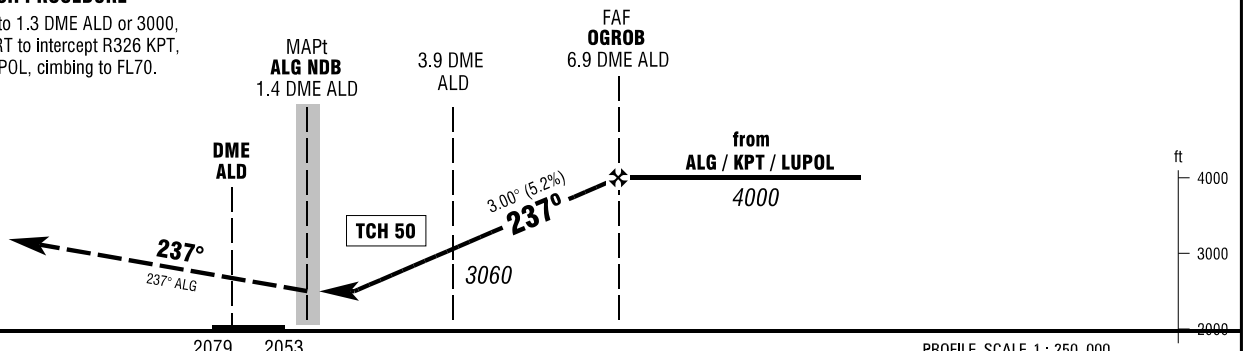
ATIS	118.850
MÜNCHEN RADAR	129.450
TOWER	126.850
GROUND	121.675

MEMMINGEN
NDB
RWY 24



MISSED APPROACH PROCEDURE

On track 237° ALG to 1.3 DME ALD or 3000, whichever is later, RT to intercept R326 KPT, on R326 KPT to LUPOL, climbing to FL70.



NM 6 5 4 3 2 1 0 1 2 3 4 5 6 7 8 9 10 11 12 13 14 NM PROFILE SCALE 1:250 000

OCA (OCH)	A	B	C	D
NDB-DME	2620 (570)	2620 (570)	2620 (570)	2620 (570)
CIRCLING * OCH RELATED TO AD ELEV	2640 (560)	2690 (610)	2940 (860)	2990 (920)

	3	4	5	6		
DME ALD						
DIST THR	2.1	3.1	4.1	5.1		
ALTITUDE	2780	3090	3410	3730		

Timing not authorized for defining the MAPt.

GS	kt	80	100	120	140	160	180
3.9 DME ALD - ALG (2.6 NM)	MIN:SEC	1:57	1:34	1:18	1:07	0:59	0:52
Rate of descent (5.2%)	ft / MIN	420	530	640	740	850	960

* SOUTHEAST OF AERODROME ONLY

Correction: Circling CAT A OCA(H) values.