

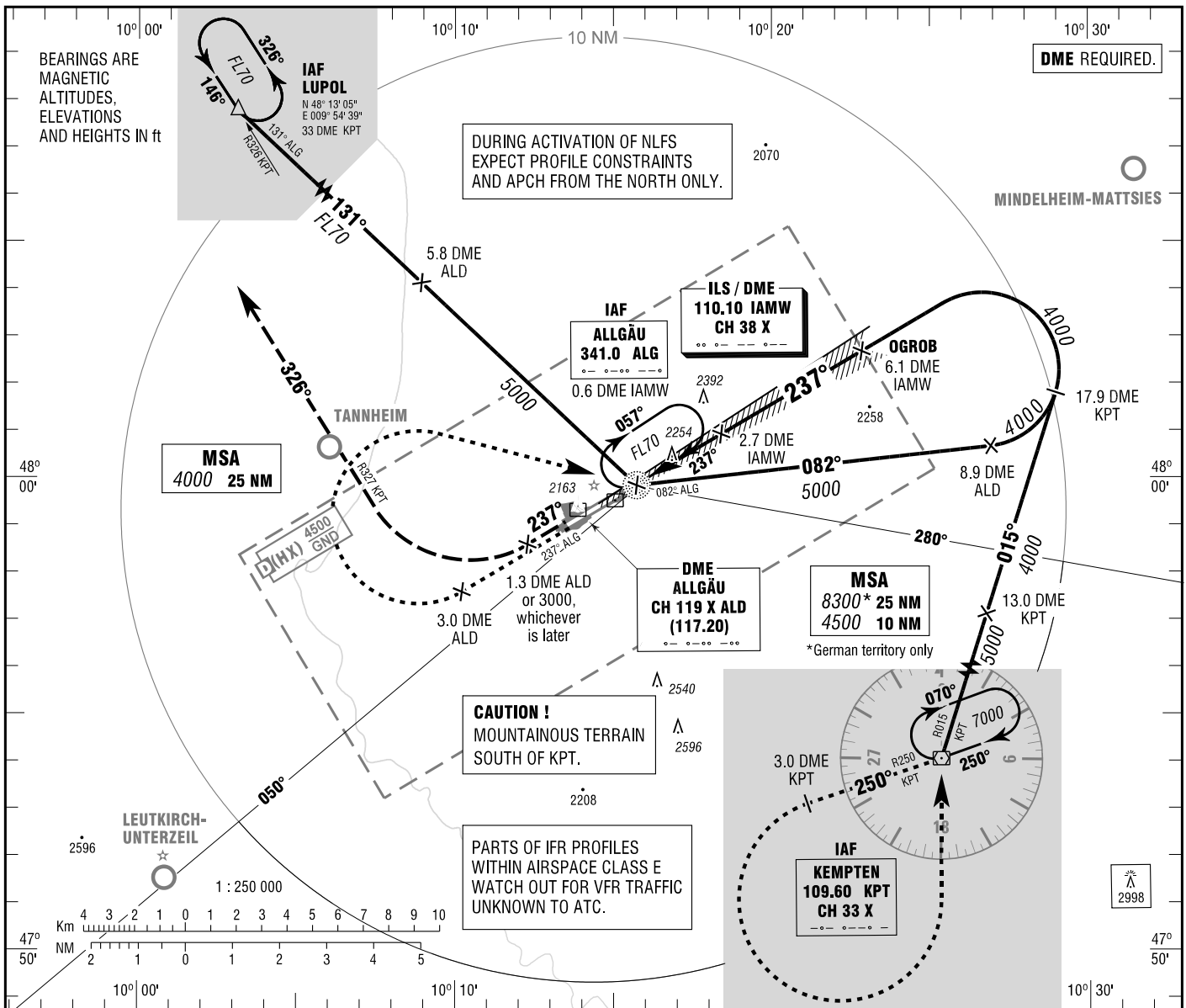
INSTRUMENT  
APPROACH  
CHART - ICAO

VAR 2° E

ELEV 2079  
OCH RELATED TO  
THR 24 ELEV 2053

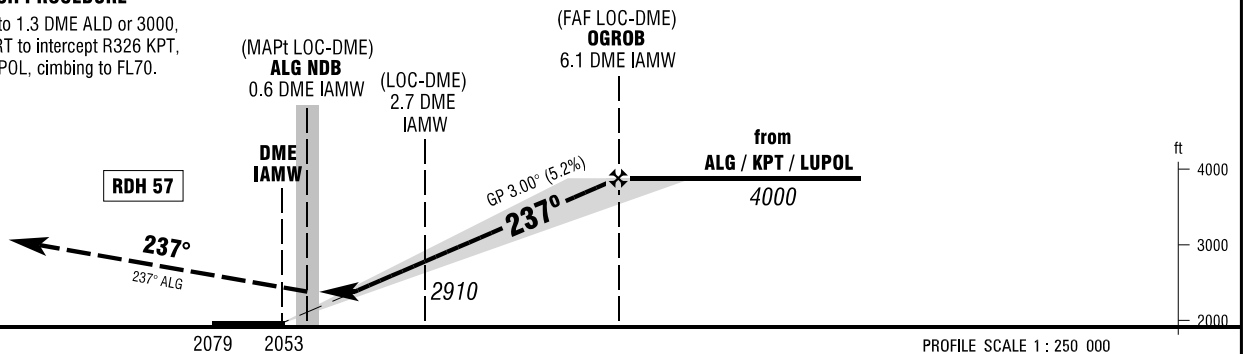
ATIS 118.850  
MÜNCHEN RADAR 129.450  
TOWER 126.850  
GROUND 121.675

MEMMINGEN  
ILS or LOC  
RWY 24



**MISSED APPROACH PROCEDURE**

On track 237° ALG to 1.3 DME ALD or 3000, whichever is later; RT to intercept R326 KPT, on R326 KPT to LUPOL, climbing to FL70.



NM 6 5 4 3 2 1 0 1 2 3 4 5 6 7 8 9 10 11 12 13 14 NM PROFILE SCALE 1: 250 000

OCA (OCH)	A	B	C	D
ILS/DME CAT I	2212 (159)	2222 (169)	2232 (179)	2242 (189)
LOC-DME	2500 (450)	2500 (450)	2500 (450)	2500 (450)
CIRCLING * OCH RELATED TO AD ELEV	2640 (560)	2690 (610)	2940 (860)	2990 (920)

DME IAMW	2	3	4	5	6		
DIST THR	1.8	2.8	3.8	4.8	5.8		
ALTITUDE	2690	3010	3320	3640	3960		

**LOC-DME:** Timing not authorized for defining the MAPt.

GS	kt	80	100	120	140	160	180
2.7 DME IAMW - ALG (2.1 NM)	MIN:SEC	1:35	1:16	1:03	0:54	0:47	0:42
Rate of descent (5.2%)	ft / MIN	420	530	640	740	850	960

\* SOUTHEAST OF AERODROME ONLY.

Correction: Circling CAT A OCA(H) values.