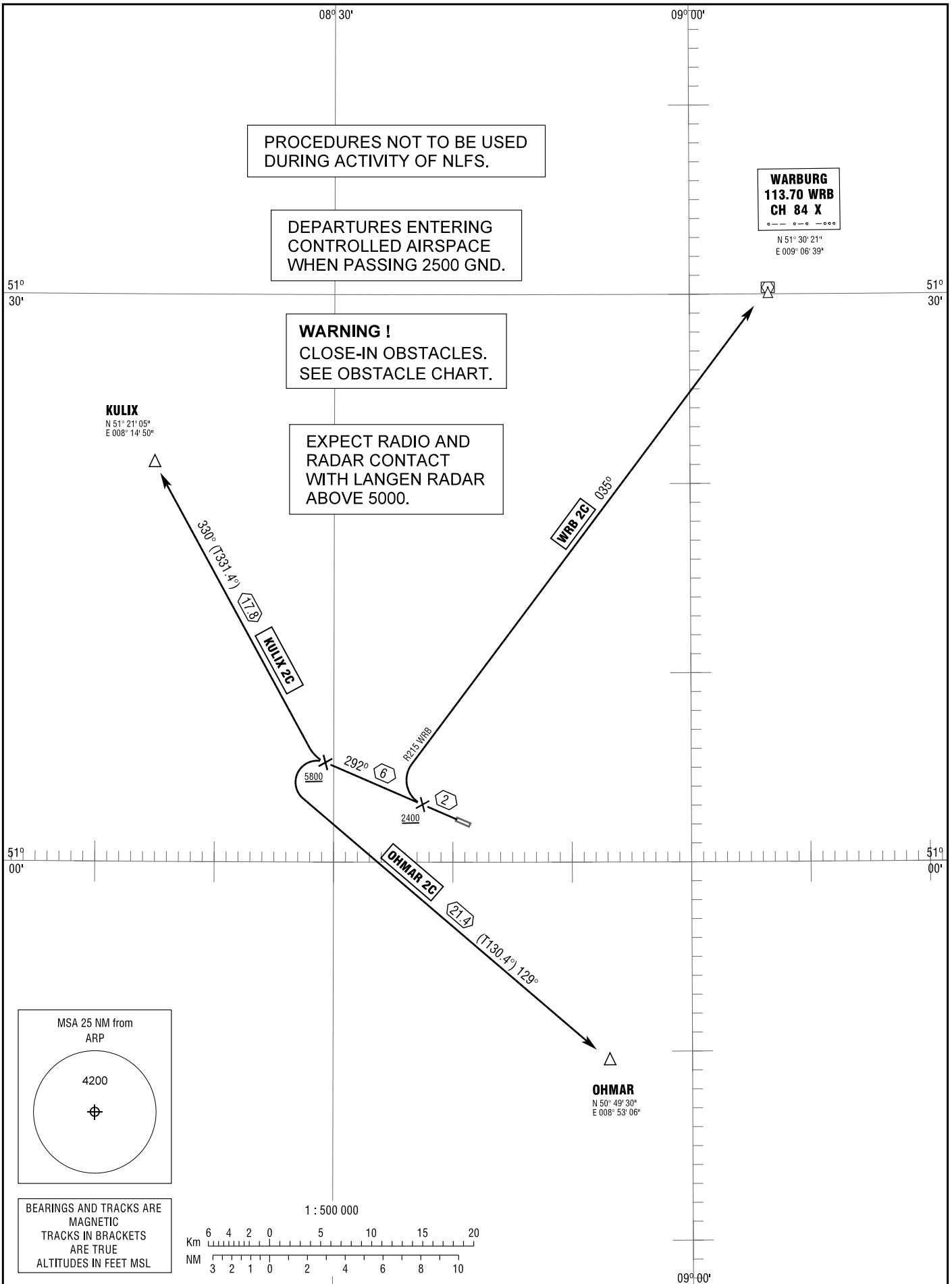


STANDARD DEPARTURE
CHART - INSTRUMENT
(SID)

TRANSITION	ALLENDORF ATIS	120.475
ALTITUDE 5000	ALLENDORF INFO	118.175
VAR 1° E	LANGEN RADAR	124.725

ALLENDORF/EDER
RWY 29



Correction: Communications, procedure.