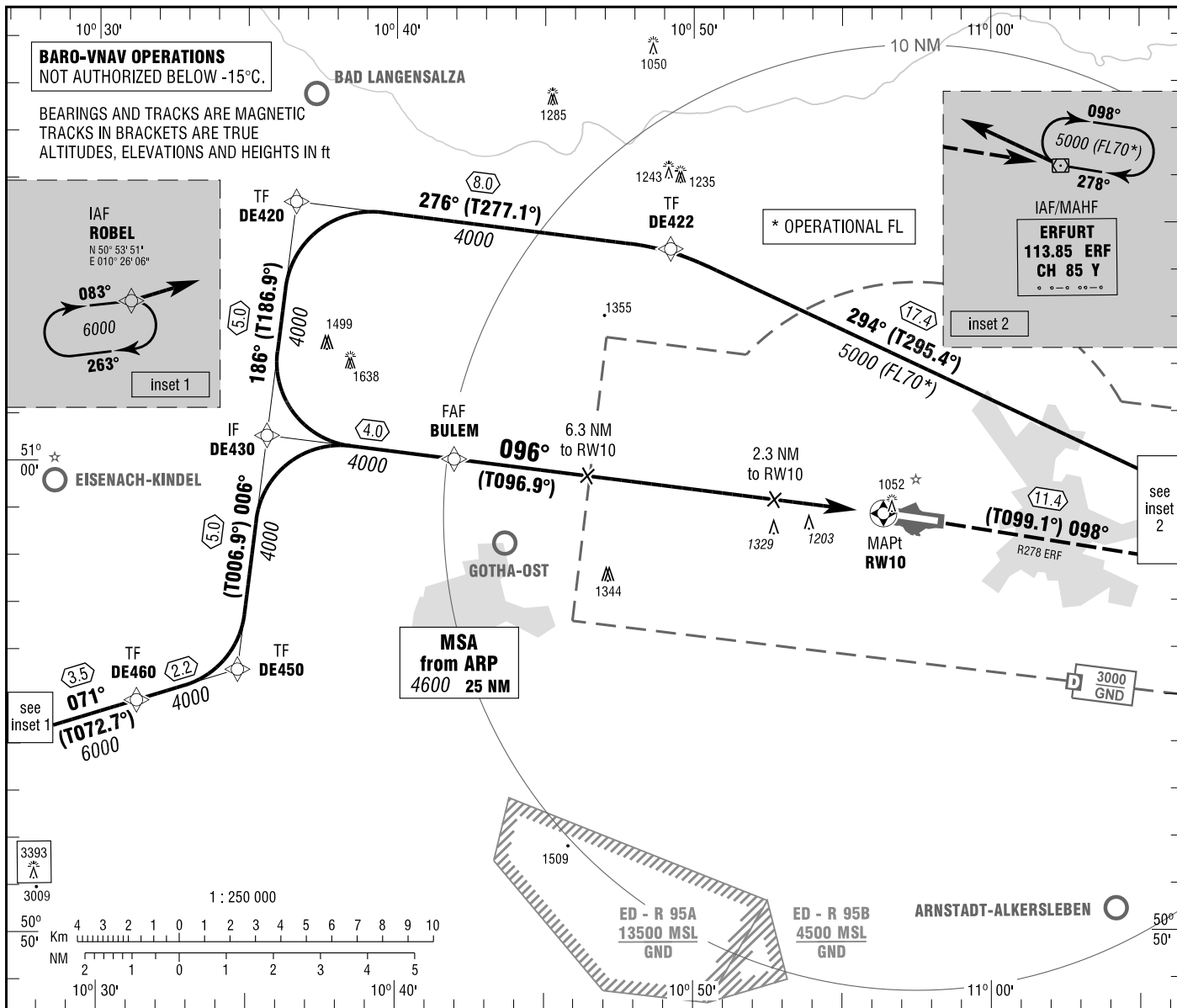


ERFURT-WEIMAR  
RNAV (GPS)  
RWY 10

ATIS 133.450 GROUND 121.750  
MÜNCHEN RADAR 126.175 APRON 121.900  
TOWER 121.150

ELEV 1036  
OCH RELATED TO VAR 2° E  
THR 10 ELEV 1025

INSTRUMENT  
APPROACH  
CHART - ICAO



On track 098° to ERF climbing to 5000.  
ERF [A5000]

**NON-RNAV**

On R278 ERF to ERF DVOR/DME  
climbing to 5000.

PROFILE SCALE 1 : 250 000

OCA (OCH)	A	B	C	D
LNAV	1490 (470)	1490 (470)	1490 (470)	1490 (470)
LNAV / VNAV	1450 (420)	1450 (420)	1450 (420)	1450 (420)
CIRCLING*	1600	1660	1760	1760

DIST THR / RW10	9	8	7	6	5	4	3	2
ALTITUDE	3950	3630	3310	2990	2670	2350	2040	1720

Timing not authorized for defining the MAPt.

GS	kt	80	100	120	140	160	180
BULEM - RWY10 (9.2 NM)	MIN:SEC	6:53	5:30	4:35	3:56	3:27	3:04
Rate of descent (5.2%)	ft / MIN	420	530	640	740	850	960

\* NORTH OF AERODROME ONLY.

Correction: AD name.