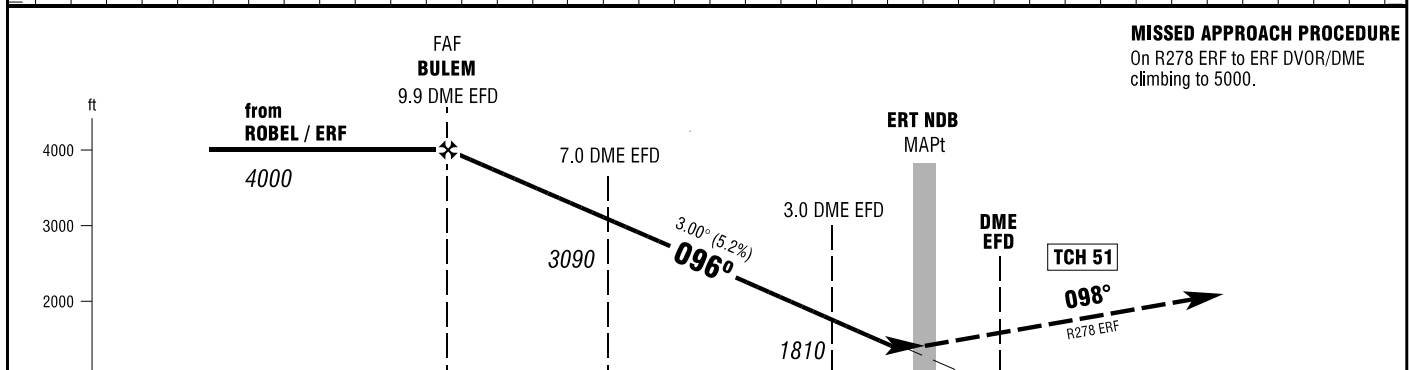
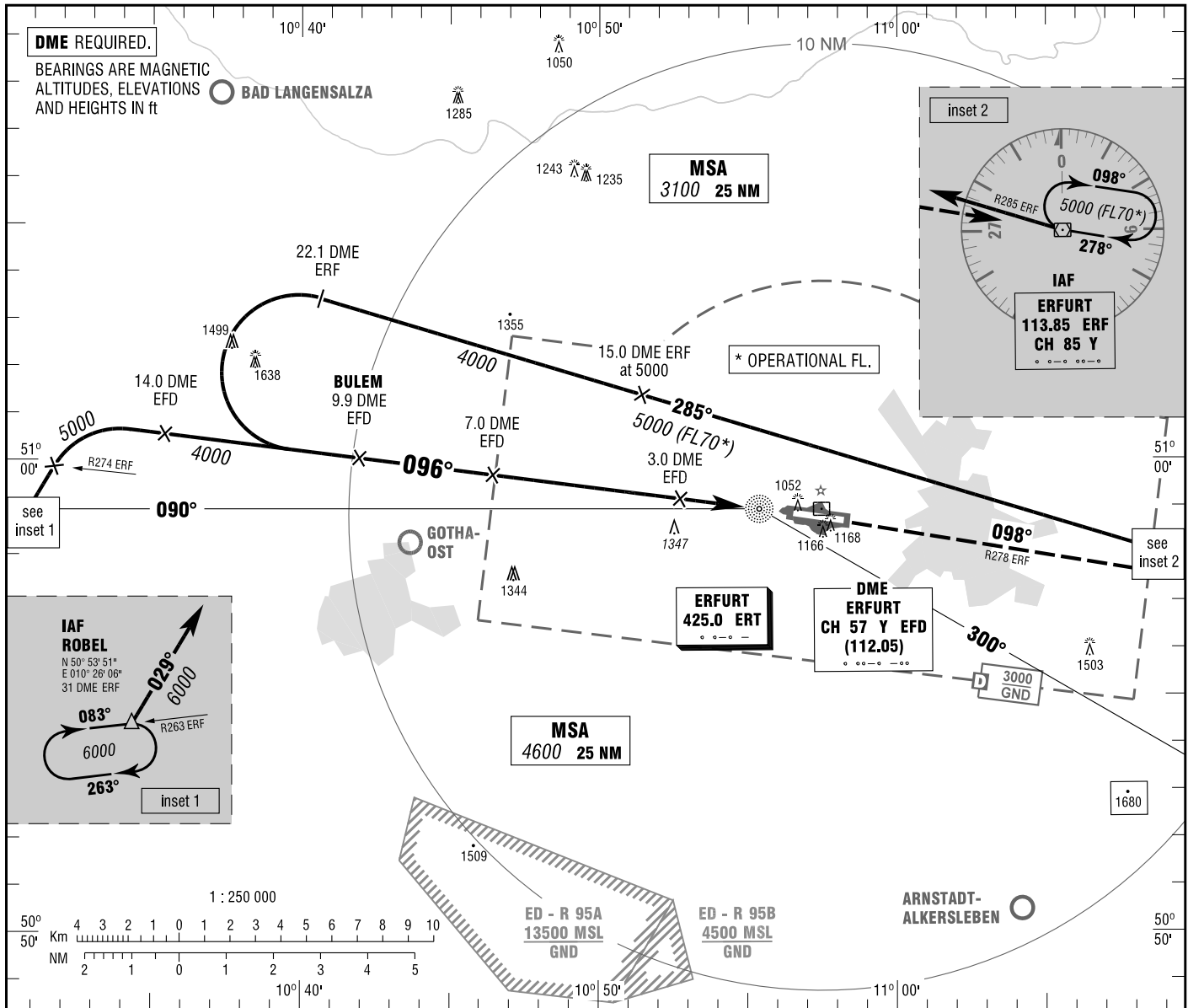


ERFURT-WEIMAR
NDB
RWY 10

ATIS 133.450 GROUND 121.750
MÜNCHEN RADAR 126.175 APRON 121.900
TOWER 121.150

ELEV 1036
OCH RELATED TO VAR 2° E
THR 10 ELEV 1025

INSTRUMENT
APPROACH
CHART - ICAO



MISSED APPROACH PROCEDURE
On R278 ERF to ERF DVOR/DME
climbing to 5000.

OCA (OCH)	A	B	C	D
NDB-DME	1600 (570)	1600 (570)	1600 (570)	1600 (570)
CIRCLING*	1600	1660	1760	1760

DME EFD	9	8	7	6	5	4	3	2
DIST THR	8.3	7.3	6.3	5.3	4.3	3.3	2.3	1.3
ALTITUDE	3720	3410	3090	2770	2450	2130	1810	1490

Timing not authorized for defining the MAPt.

GS	kt	80	100	120	140	160	180
3.0 DME EFD - ERT (1.7 NM)	MIN:SEC	1:17	1:01	0:51	0:44	0:38	0:34
Rate of descent (5.2%)	ft / MIN	420	530	640	740	850	960

* NORTH OF AERODROME ONLY.

Correction: AD name.