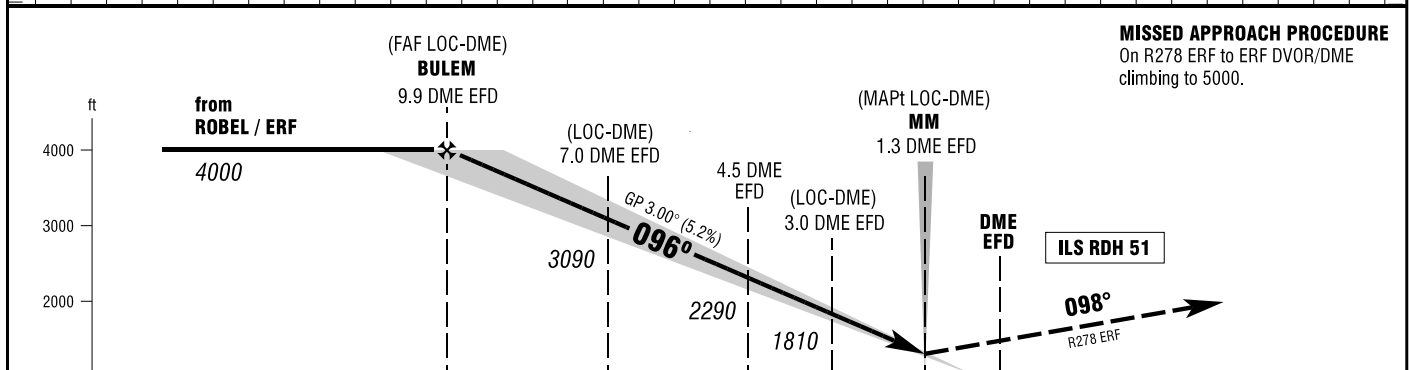
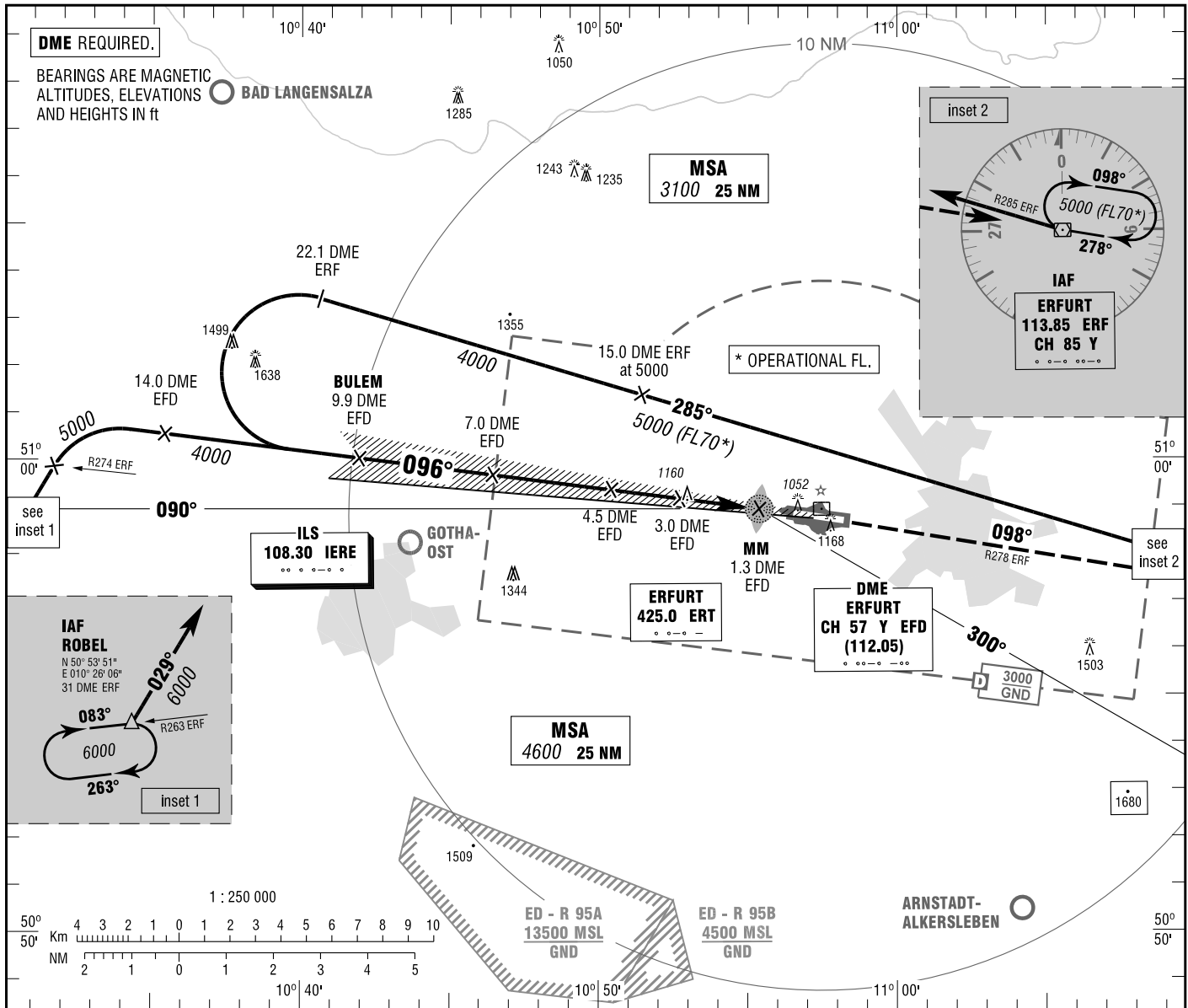


ERFURT-WEIMAR
ILS CAT II & III or LOC
RWY 10

ATIS	133.450	GROUND	121.750
MÜNCHEN RADAR	126.175	APRON	121.900
TOWER	121.150		

ELEV 1036
OCH RELATED TO VAR 2° E
THR 10 ELEV 1025

INSTRUMENT
APPROACH
CHART - ICAO



MISSED APPROACH PROCEDURE
On R278 ERF to ERF DVOR/DME
climbing to 5000.

OCA (OCH)	A	B	C	D
ILS-DME CAT I	1184 (159)	1193 (168)	1203 (178)	1213 (188)
ILS-DME CAT II	1095 (70)	1111 (86)	1124 (99)	1138 (113)
LOC-DME	1410 (390)	1410 (390)	1410 (390)	1410 (390)
CIRCLING*	1600	1660	1760	1760

DME EFD	9	8	7	6	5	4	3	2
DIST THR	8.3	7.3	6.3	5.3	4.3	3.3	2.3	1.3
ALTITUDE	3720	3410	3090	2770	2450	2130	1810	1490

LOC-DME: Timing not authorized for defining the MAPt.

GS	kt	80	100	120	140	160	180
4.5 DME EFD - THR (3.8 NM)	MIN:SEC	2:51	2:17	1:54	1:38	1:26	1:16
Rate of descent (5.2%)	ft / MIN	420	530	640	740	850	960

CAT IIIA APPROVED: MNM DH 50 FT, MNM RVR 200 M, CAT D ACFT ARE NOT PERMITTED FOR CAT III APPROACHES.

* NORTH OF AERODROME ONLY.

Correction: AD name.