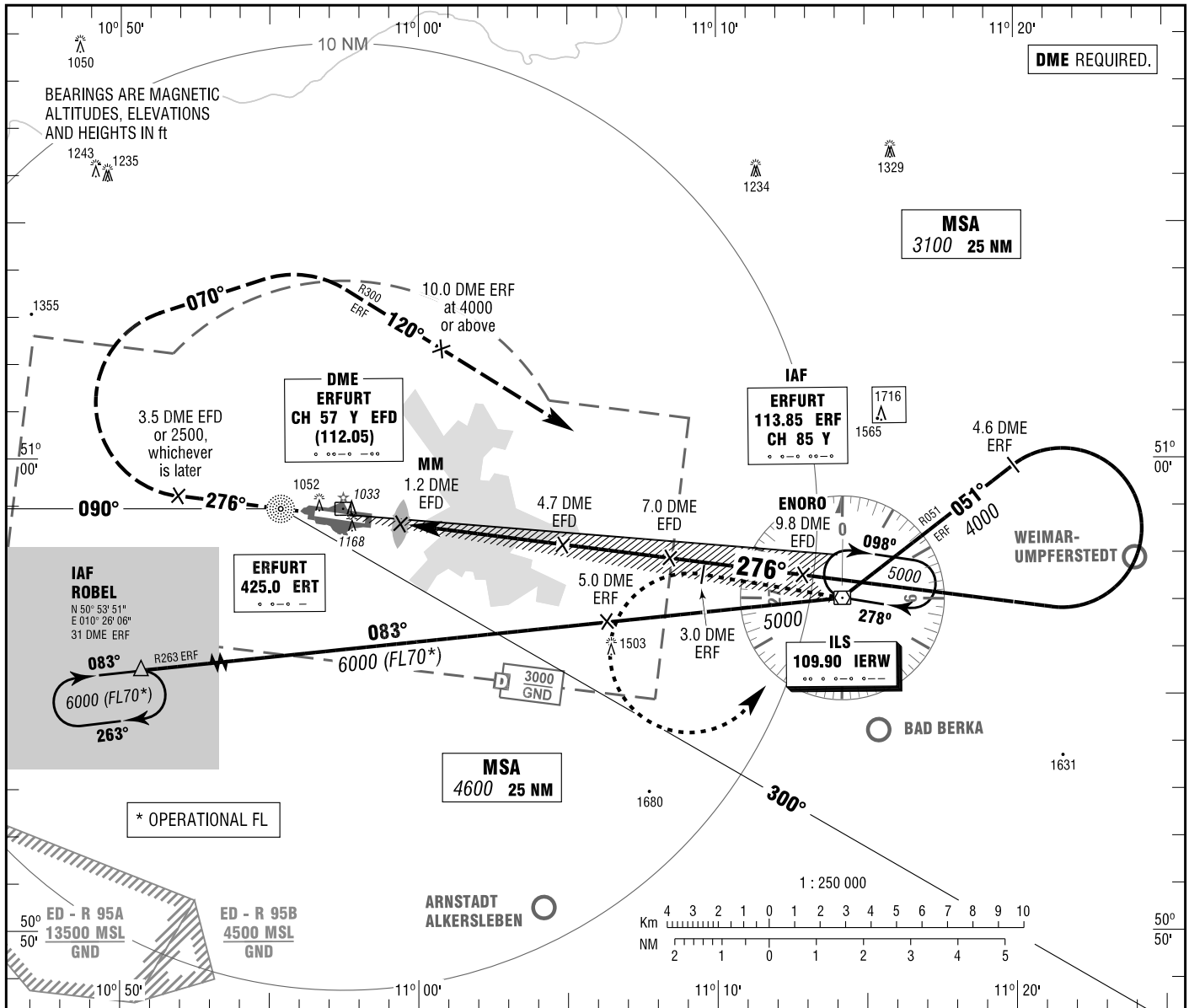


INSTRUMENT APPROACH CHART - ICAO

VAR 2° E
ELEV 1036
OCH RELATED TO THR 28 ELEV 1016

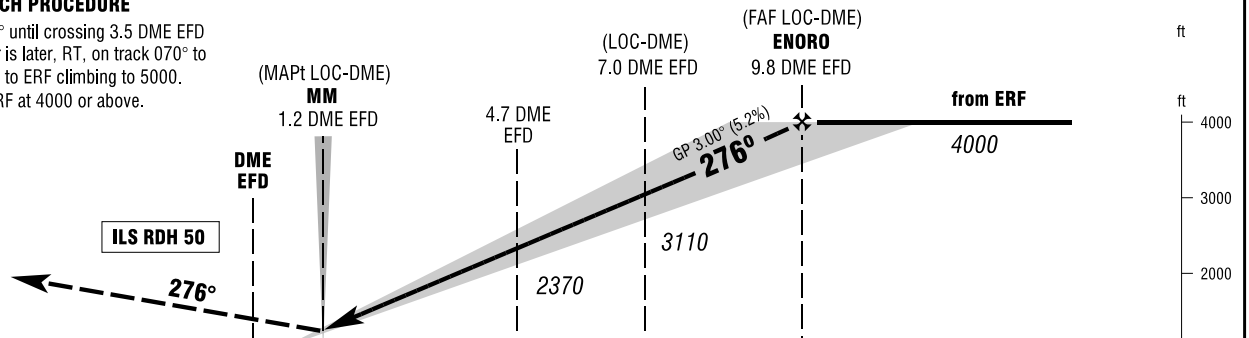
ATIS 133.450
MÜNCHEN RADAR 126.175
TOWER 121.150
GROUND 121.750
APRON 121.900

ERFURT-WEIMAR
ILS CAT II & III or LOC
RWY 28



MISSED APPROACH PROCEDURE

Climb on track 276° until crossing 3.5 DME EFD or 2500, whichever is later, RT, on track 070° to intercept R300 ERF to ERF climbing to 5000. Cross 10.0 DME ERF at 4000 or above.



OCA (OCH)	A	B	C	D
ILS-DME CAT I	1164 (148)	1174 (158)	1184 (168)	1194 (178)
ILS-DME CAT II	1076 (60)	1092 (76)	1105 (89)	1118 (102)
LOC-DME	1370 (350)	1370 (350)	1370 (350)	1370 (350)
CIRCLING*	1600	1660	1760	1760

DME EFD	2	3	4	5	6	7	8	9
DIST THR	1.4	2.4	3.4	4.4	5.4	6.4	7.4	8.4
ALTITUDE	1520	1840	2150	2470	2790	3110	3430	3750

LOC-DME: Timing not authorized for defining the MAPt.

GS	kt	80	100	120	140	160	180
4.7 DME EFD - THR (4.1 NM)	MIN:SEC	3:05	2:28	2:03	1:45	1:32	1:22
Rate of descent (5.2%)	ft / MIN	420	530	640	740	850	960

CAT IIIA AND CAT IIIB (MNM RVR 75M) APPROVED. *NORTH OF AERODROME ONLY.

Correction: AD name.