

STANDARD DEPARTURE CHART-INSTRUMENT

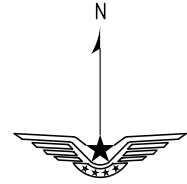
VAR6° W

ATIS 127.2
D-ATIS 131.45
TWR 118.7(124.3)
APP 119.4(124.6)/AP01
121.15(124.6)/AP02

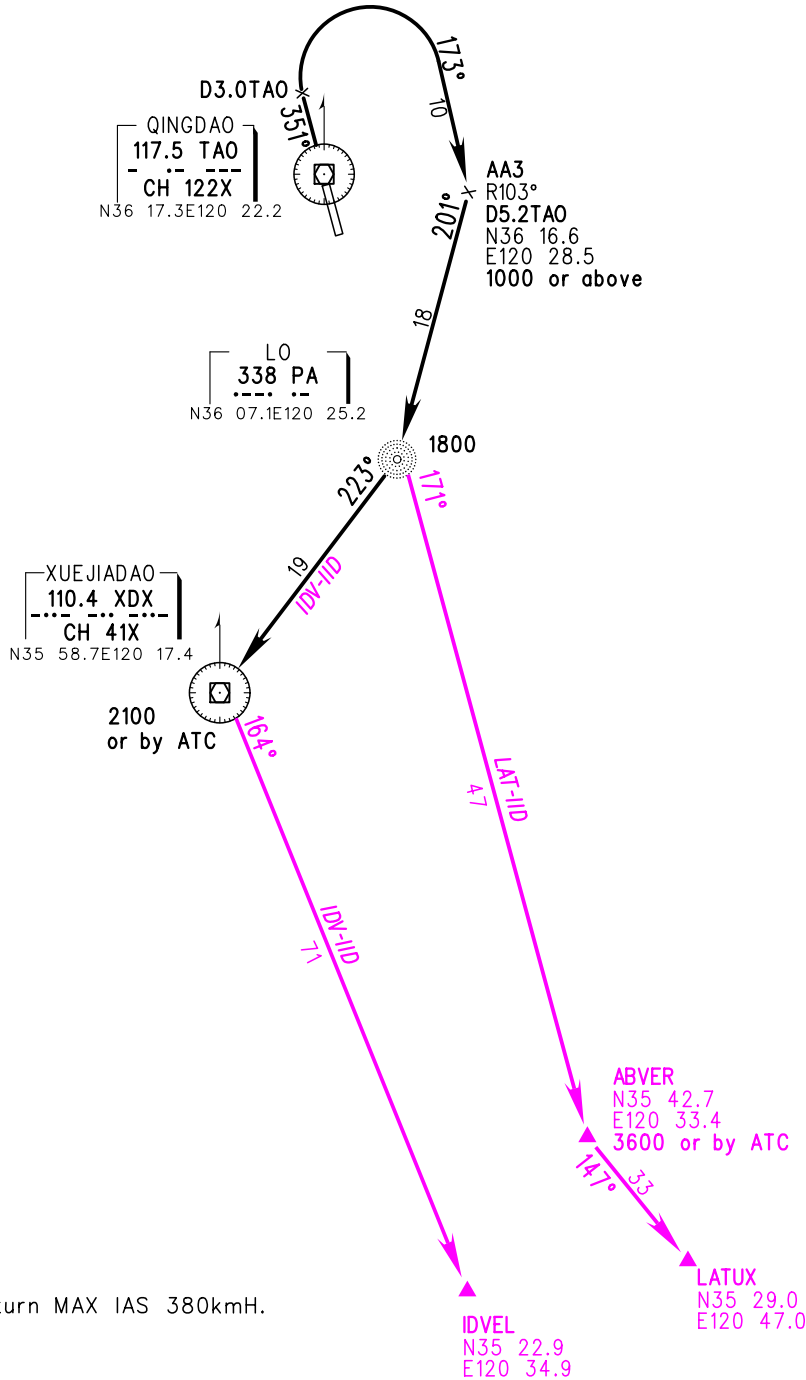
ZSQD QINGDAO/Liuting
RWY35

BEARINGS ARE MAGNETIC
ALTITUDES, ELEVATIONS
AND HEIGHTS IN METERS
DME DISTANCES IN
NAUTICAL MILES
DISTANCES IN KM

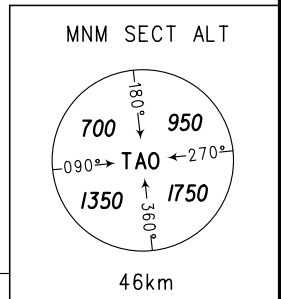
TL 3600
TA 3000
3300(QNH>1031HPA)
2700(QNH<979HPA)



NOT TO SCALE



Note:Departure turn MAX IAS 380kmH.



Changes: Procedure, APP FREQ.