

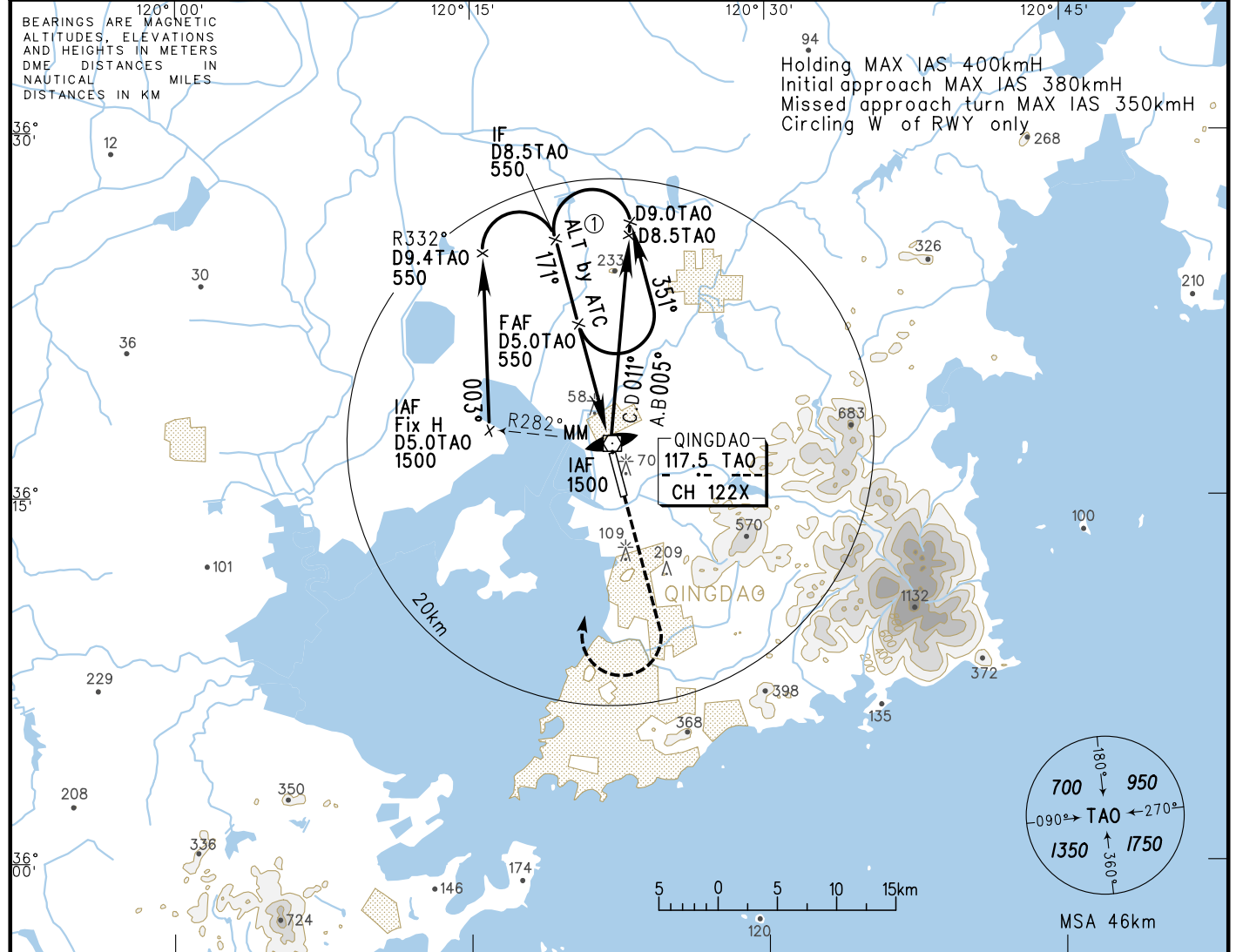
INSTRUMENT APPROACH CHART-ICAO

VAR6° W

AERODROME ELEV 10
HEIGHTS RELATED TO
THR RWY17 ELEV 10

ATIS 127.2
D-ATIS 131.45
TWR 118.7(124.3)
APP 119.4(124.6)/AP01
121.15(124.6)/AP02

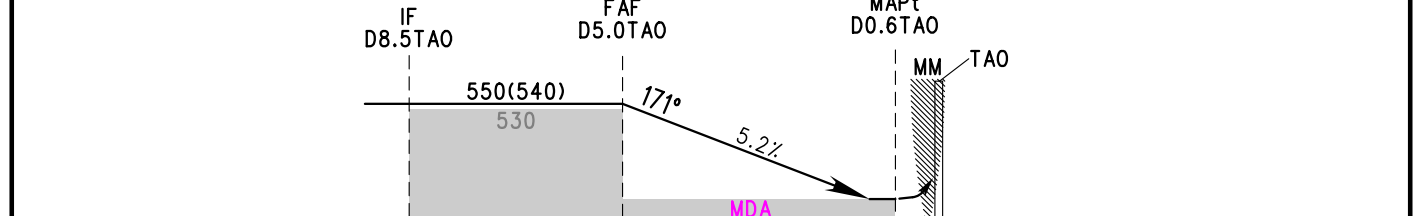
ZSQD QINGDAO/Liuting
VOR/DME RWY17



DME (TAO) (NM)	8	7	6	5	4	3	2	1
ALT (m)				550	450	353	256	159

TL 3600
TA 3000
3300(QNH ≥ 1031HPA)
2700(QNH < 979HPA)

MISSED APPROACH
Climb straight ahead to 300,
turn RIGHT to 'TAO' at 1200.



	A	B	C	D	FAF-MAPt 8.2km						
VOR/DME MDA(H) VIS		150(140) 2000		150(140) 2200	GS in kmH	150	185	220	260	295	335
CIRCLING MDA(H) VIS	260(250) 2800	260(250) 3200	350(340) 4400	350(340) 5000	Time min:sec	3:19	2:39	2:13	1:54	1:40	1:29
					Rate of descent m/s	2.2	2.7	3.2	3.8	4.3	4.9

Changes: Landing minima, APP FREQ.