

INSTRUMENT APPROACH CHART-ICAO

VAR6° W

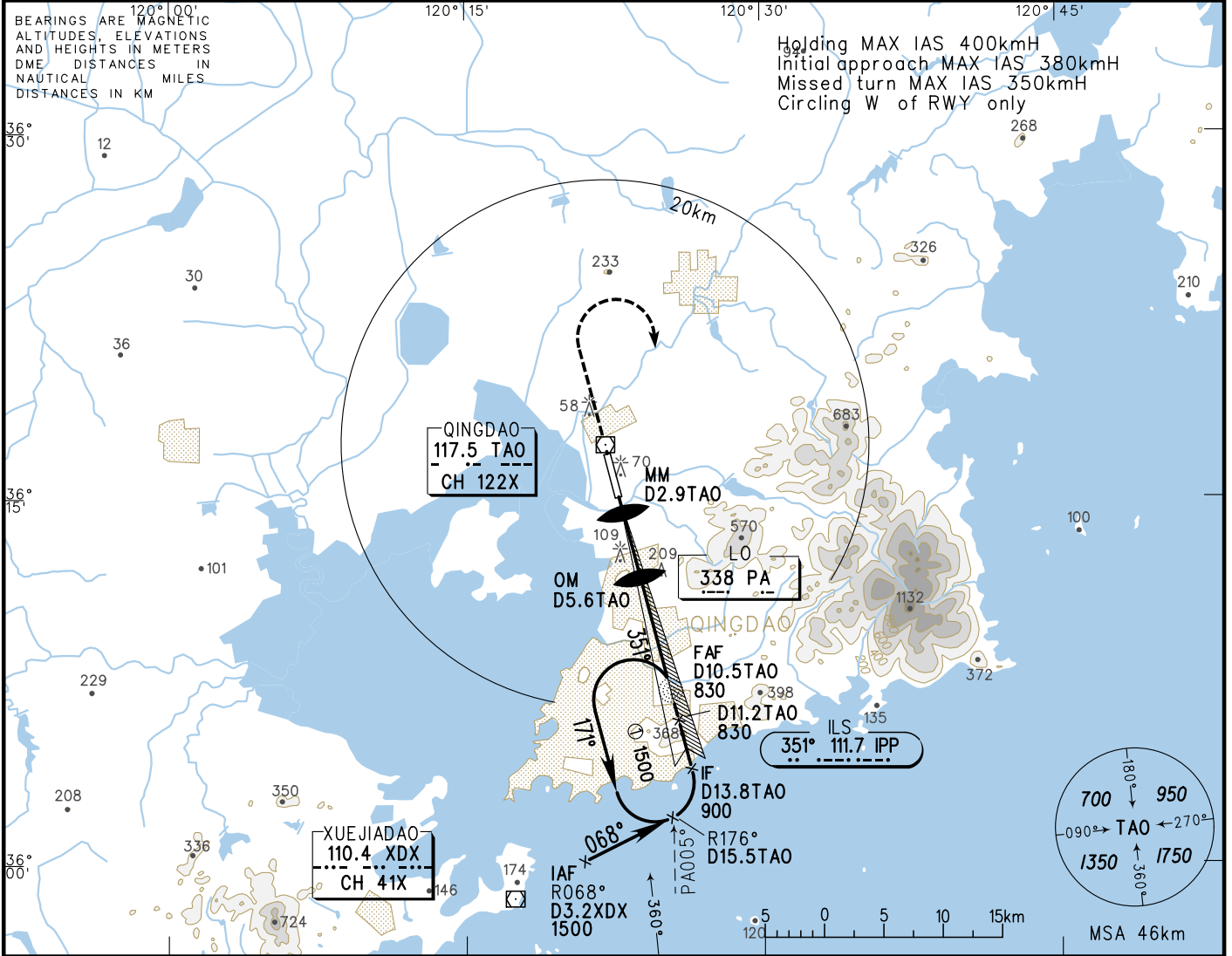
AERODROME ELEV 10
HEIGHTS RELATED TO THR RWY35 ELEV 10

ATIS 127.2
D-ATIS 131.45
TWR 118.7(124.3)
APP 119.4(124.6)/AP01
121.15(124.6)/AP02

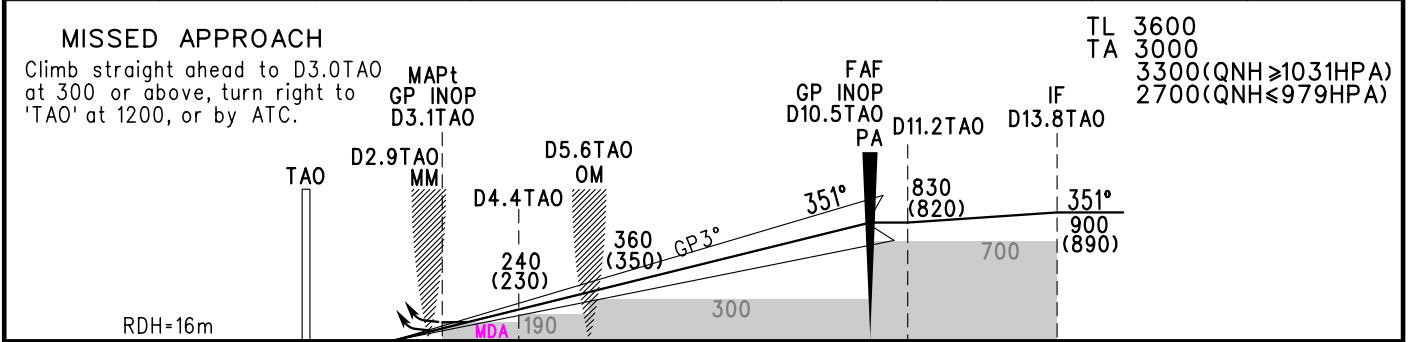
ZSQD QINGDAO/Liuting
ILS/DME RWY35

BEARINGS ARE MAGNETIC
ALTITUDES, ELEVATIONS
AND HEIGHTS IN METERS
DME DISTANCES IN
NAUTICAL MILES
DISTANCES IN KM

Holding MAX IAS 400kmH
Initial approach MAX IAS 380kmH
Missed turn MAX IAS 350kmH
Circling W of RWY only



GP INOP	DME (TAO) (NM)	3	4	5	6	7	8	9
	ALT (m)		198	295	392	490	587	684



	A	B	C	D	FAF-MAPt(GP INOP) 13.8km						
ILS/DME <small>DA(H)</small> <small>RVR/VIS</small>	70(60) 550/800		75(65) 550/800	75(65) 600/800	GS in kmH	150	185	220	260	295	335
GP INOP <small>MDA(H)</small> <small>VIS</small>	140(130) 2000		140(130) 2200		Time min:sec	5:31	4:29	3:46	3:11	2:48	2:28
CIRCLING <small>MDA(H)</small> <small>VIS</small>	260(250) 2800	260(250) 3200	350(340) 4400	350(340) 5000	Rate of descent m/s	2.2	2.7	3.2	3.8	4.3	4.9

Changes: Landing minima, APP FREQ.