

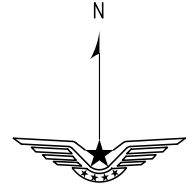
STANDARD ARRIVAL CHART-INSTRUMENT

VAR 4° W

ATIS 128.85
 APP 119.85(124.45) AP01
 120.45(124.45) AP02
 TWR 118.75(118.1)

ZSOF HEFEI/Xinqiao
 RWY15

BEARINGS ARE MAGNETIC
 ALTITUDES, ELEVATIONS
 AND HEIGHTS IN METERS
 DME DISTANCES IN
 NAUTICAL MILES
 DISTANCES IN KM



NOT TO SCALE

TL 3600
 TA 3000
 3300(QNH>1031HPA)
 2700(QNH<979HPA)

KAGVO
 R003°
 D56.2HFE
 N32 42.8
 E117 15.5
 4500

SEGPI
 R003°
 N32 32.0
 E117 16.0
 3600

Holding MAX IAS 400kmH
 Initial Approach MAX IAS 380kmH

BIPIM
 N32 33.9
 E116 11.0

IAF
 R314°
 D45.0HFE
 1200

CHA'AN
 111.8 HFC
 CH 55X
 N32 04.8E116 46.1

IAF
 AKAMI
 D13.9HFC
 N32 15.0
 E116 57.2
 1200

IAF
 R327°
 D20.8HFE
 R352°
 D16.9THA
 N32 03.2
 E117 03.2
 1800

IAF
 R157°
 D14.9HFC
 R298°
 D12.4THA
 2400

XINQIAO
 109.8 XQH
 CH 35X
 N32 00.6E116 57.6

HEFEI
 116.7 HFE
 CH 114X
 N31 46.5E117 18.1

UXALO
 R254°
 D15.9HFE
 R231°
 D8.1THA
 N31 41.1
 E117 00.5
 3600

KIKEG
 R237°
 D16.0HFE
 R205°
 D10.5THA
 N31 36.9
 E117 03.1
 3600

TAOHUA
 114.7 THA
 CH 94X
 N31 46.7E117 07.4

MIDOX
 N31 19.3
 E115 52.9

LEGIV
 N31 36.5
 E117 34.5

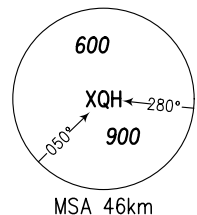
MADUK
 N31 43.1
 E118 06.3

OREVO
 N31 40.0
 E118 10.5

IKUBA
 N30 51.3
 E115 54.1

Note: Actual flight ALT instructed by ATC.

MNM SECT ALT



Changes: