

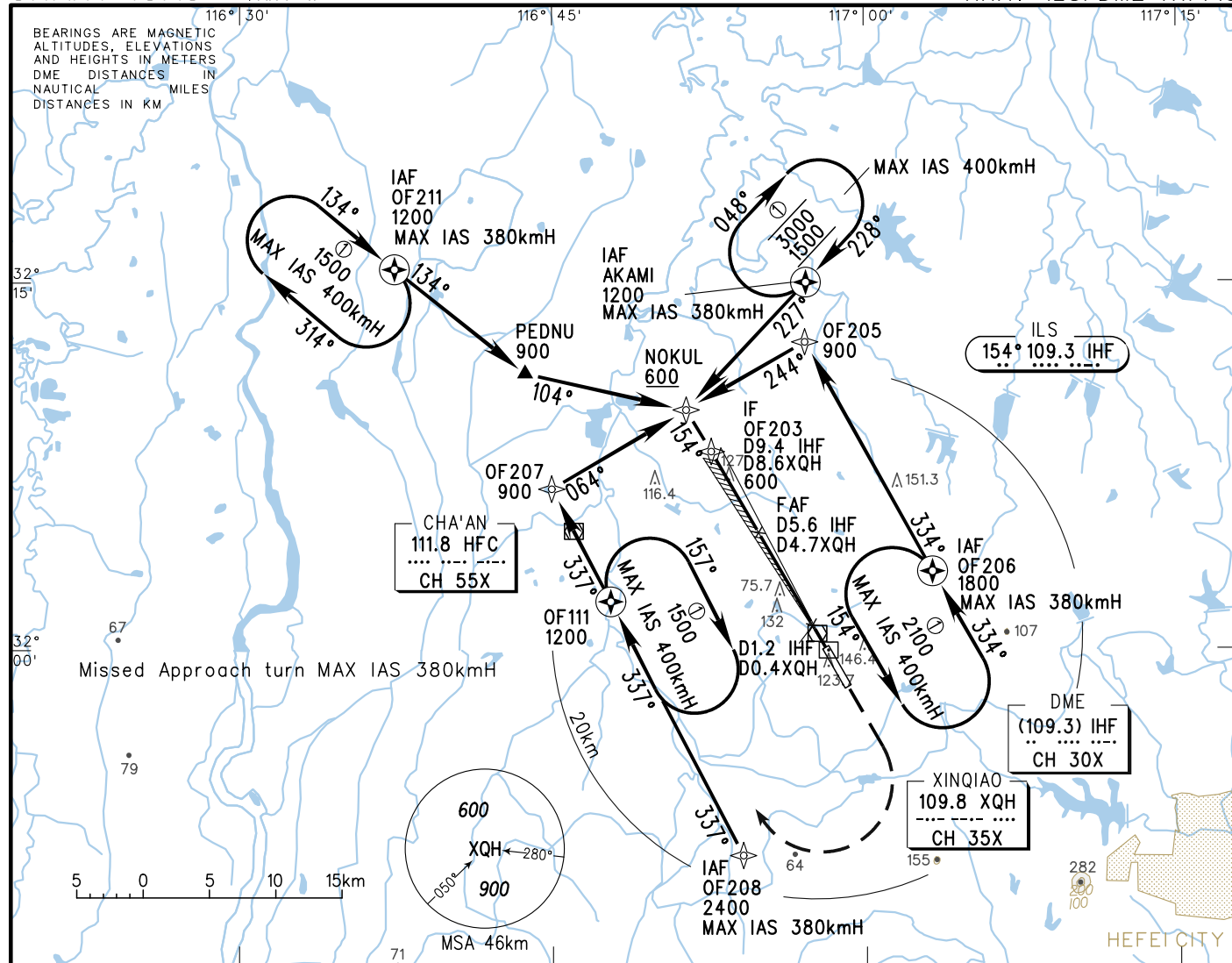
# INSTRUMENT APPROACH CHART-ICAO

VAR 4° W

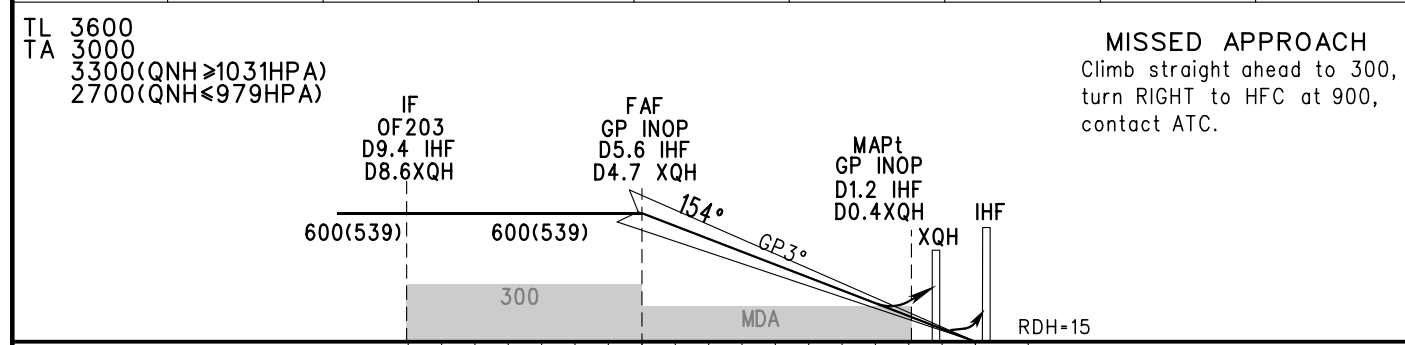
AERODROME ELEV 63.5  
HEIGHTS RELATED TO THR RWY15 ELEV 61.1

ATIS 128.85  
APP 119.85(124.45) /AP01  
120.45(124.45)/AP02  
TWR 118.75(118.1)

ZSOF HEFEI/Xinqiao  
RNAV ILS/DME RWY15



GP INOP	DME (IHF) (NM)	7	6	5	4	3	2	1
	ALT (m)			546	449	352	255	



	A	B	C	D	FAF-MAPt(GP INOP) 8.1km						
					GS in kt	100	120	140	160	180	
ILS/DME DA(H) RVR/VIS	121(60) 550/800	126(65) 550/800	126(65) 600/800		80 150	100 185	120 220	140 260	160 295	180 335	
GP INOP MDA(H) VIS	210(149) 2000	210(149) 2200	210(149) 2400		Time min:sec	3:17	2:37	2:11	1:52	1:38	1:27
CIRCLING MDA(H) VIS	300(237) 3200	350(287) 4400	400(337) 5000		Rate of descent m/s	2.2	2.7	3.2	3.8	4.3	4.9

Changes: New chart.