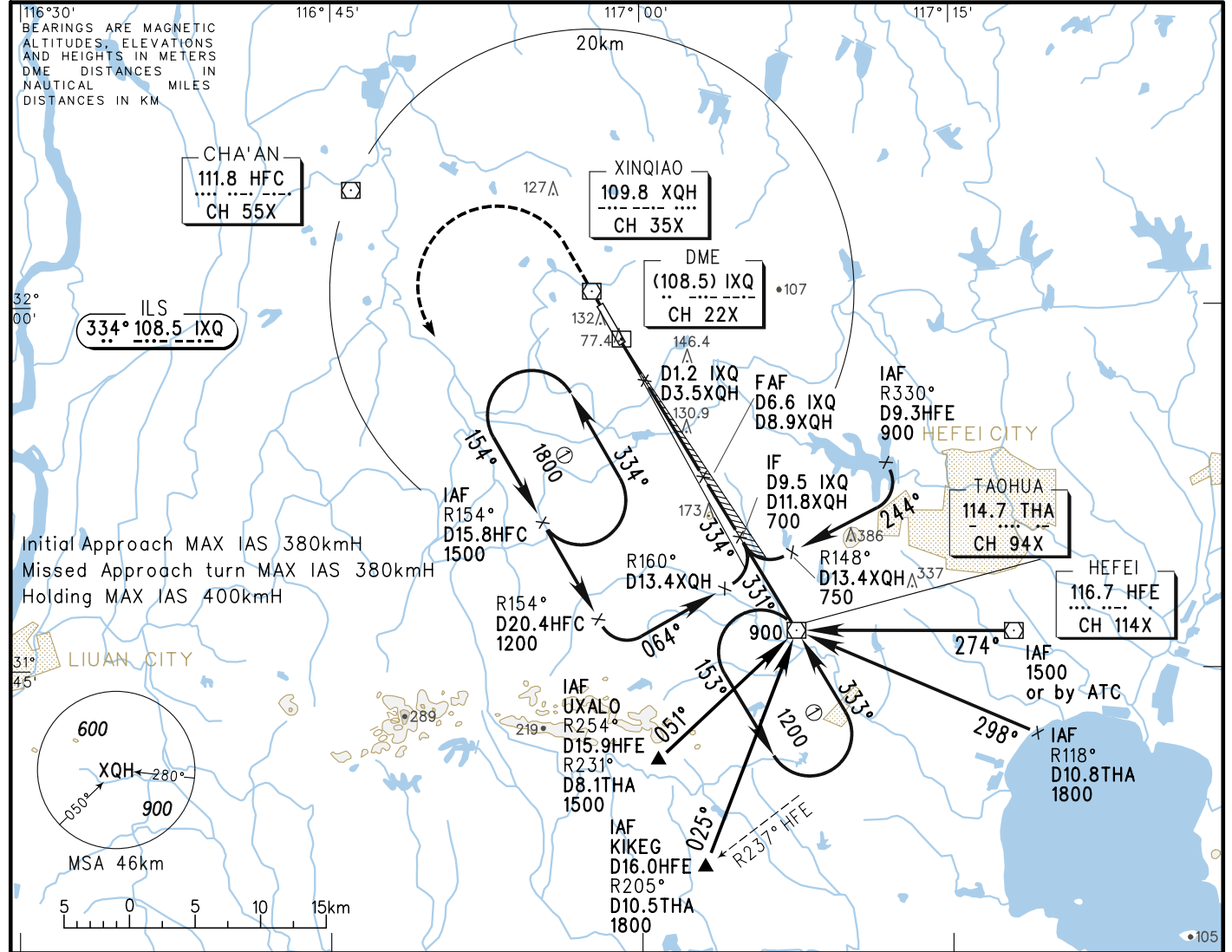


INSTRUMENT APPROACH CHART-ICAO

AERODROME ELEV 63.5
 HEIGHTS RELATED TO THR RWY33 ELEV 63.4
 VAR 4° W

ATIS 128.85
 APP 119.85(124.45) AP01
 120.45(124.45) AP02
 TWR 118.75(118.1)

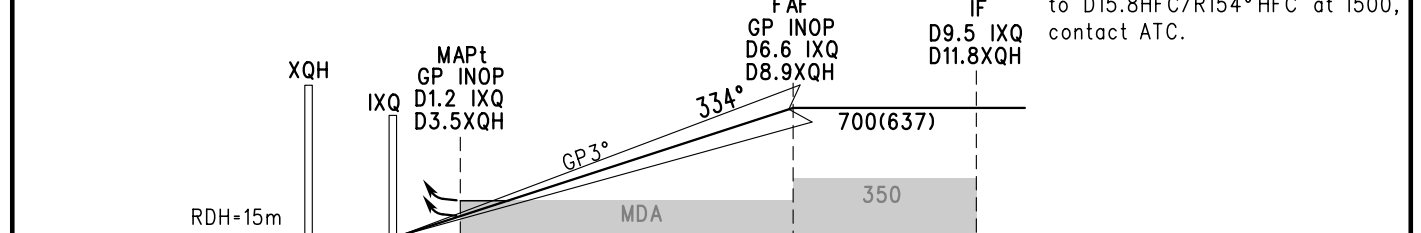
ZSOF HEFEI/Xinqiao
 ILS/DME RWY33



GP INOP	DME (IXQ) (NM)	1	2	3	4	5	6	7
	ALT (m)		257	354	451	548	645	

TL 3600
 TA 3000
 3300(QNH ≥ 1031HPA)
 2700(QNH ≤ 979HPA)

MISSED APPROACH
 Climb straight ahead to 300,
 turn LEFT intercept R154° HFC
 to D15.8HFC/R154° HFC at 1500,
 contact ATC.



ILS/DME	DA(H) RVR/VIS	A	B	C	D	FAF-MAPt(GP INOP) 10.0km					
		123(60) 550/800	128(65) 550/800	128(65) 600/800	GS in kt kmH	80 150	100 185	120 220	140 260	160 295	180 335
GP INOP	MDA(H) VIS	210(147) 2000	210(147) 2200	210(147) 2400	Time min:sec	4:03	3:14	2:42	2:19	2:01	1:48
CIRCLING	MDA(H) VIS	300(237) 3200	350(287) 4400	400(337) 5000	Rate of descent m/s	2.2	2.7	3.2	3.8	4.3	4.9

Changes: