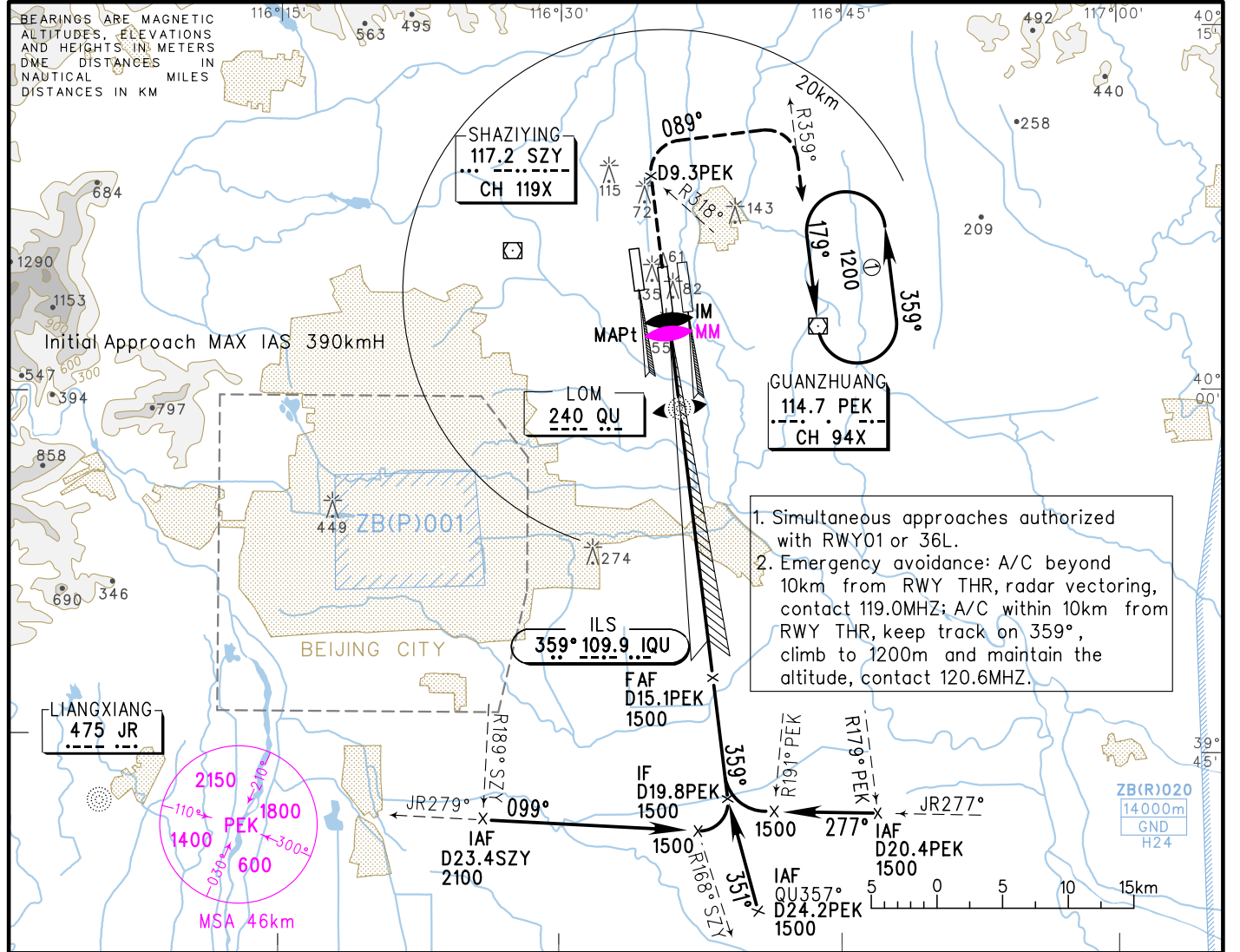


INSTRUMENT APPROACH CHART-ICAO

ATIS 127.6	119.0(125.05) AP01 (H0)
124.3(118.3) TWR01 (18R/36L)	126.1(129.0) AP02 (H0)
118.5(118.3) TWR02 (18L/36R)	120.6(125.05) AP03 (H24)
118.05(118.6) TWR03 (01/19)	119.7(129.0) AP04 (H0)
	125.50(124.70) AP08

ZBAA BEIJING/Capital ILS RWY36R



1. Simultaneous approaches authorized with RWY01 or 36L.
2. Emergency avoidance: A/C beyond 10km from RWY THR, radar vectoring, contact 119.0MHZ; A/C within 10km from RWY THR, keep track on 359°, climb to 1200m and maintain the altitude, contact 120.6MHZ.

GP INOP	DME () (NM)	2	4	6	8	10	12	14
	ALT (m)							

MISSED APPROACH
 Climb straight ahead to R318°/D9.3PEK, turn RIGHT on track 089° to intercept R359° PEK, climb to PEK at 1200, join in holding pattern, contact ATC.

TL 3600
 TA 3000
 3300(QNH≥1031HPA)
 2700(QNH≤979HPA)

RDH=15.8m

	A	B	C	D	FAF-MAPt(GP INOP) 26.7km							
					GS in kt	100	120	140	160	180	180	
ILS/DME DA(H) RVR/VIS		90(60) 550/800		90(60) 600/800	80 150	100 185	120 220	140 260	160 295	180 335		
GP INOP MDA(H) VIS		130(100) 1200		130(100) 1600							10:49	08:39
											07:13	06:11
											05:24	04:48
CIRCLING MDA(H) VIS		210(175) 1600	265(230) 3200	265(230) 3600							2.2	2.7
											3.2	3.8
											4.3	4.9

Changes: Landing minima; MSA; NDB 'Q' withdrawn.