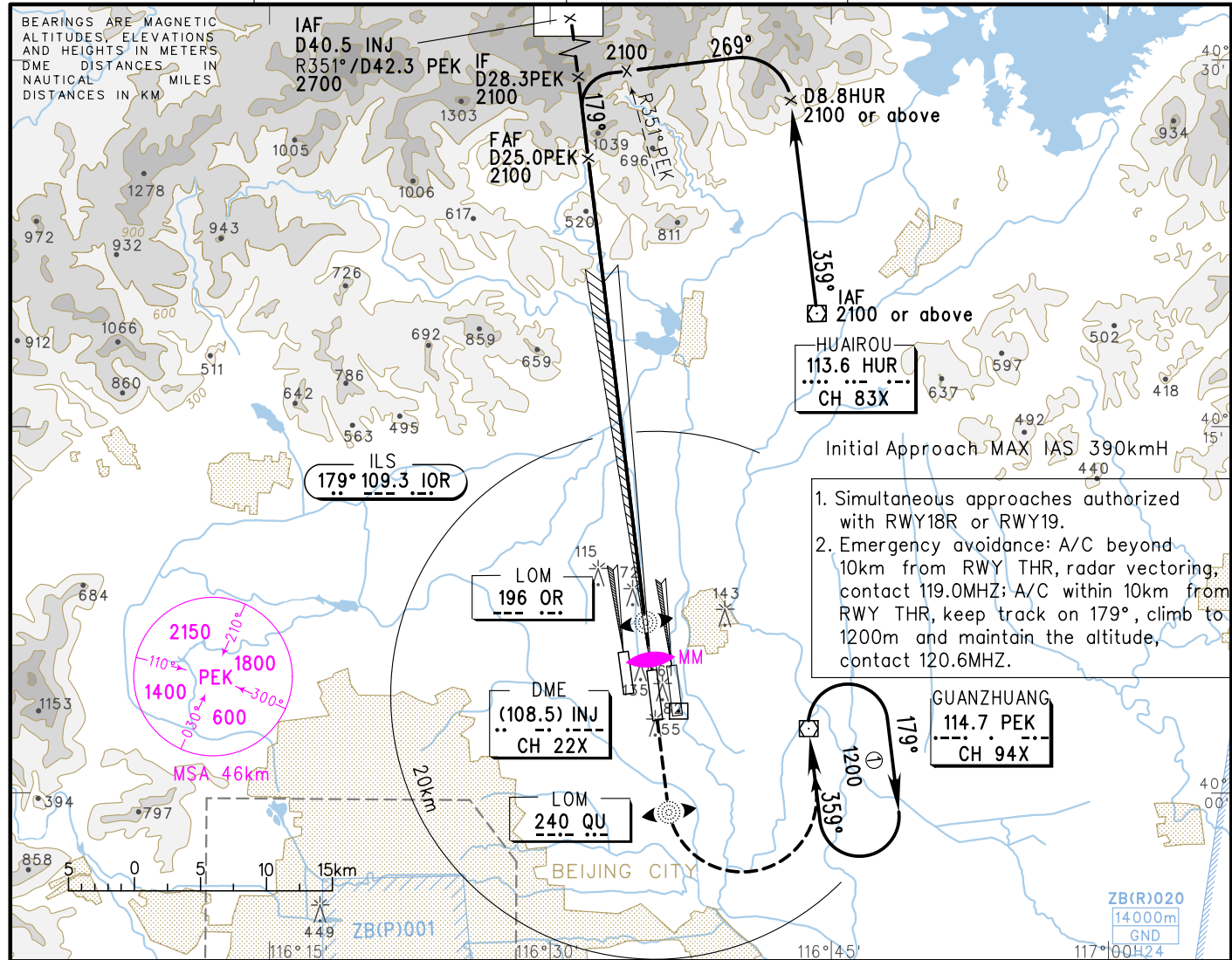


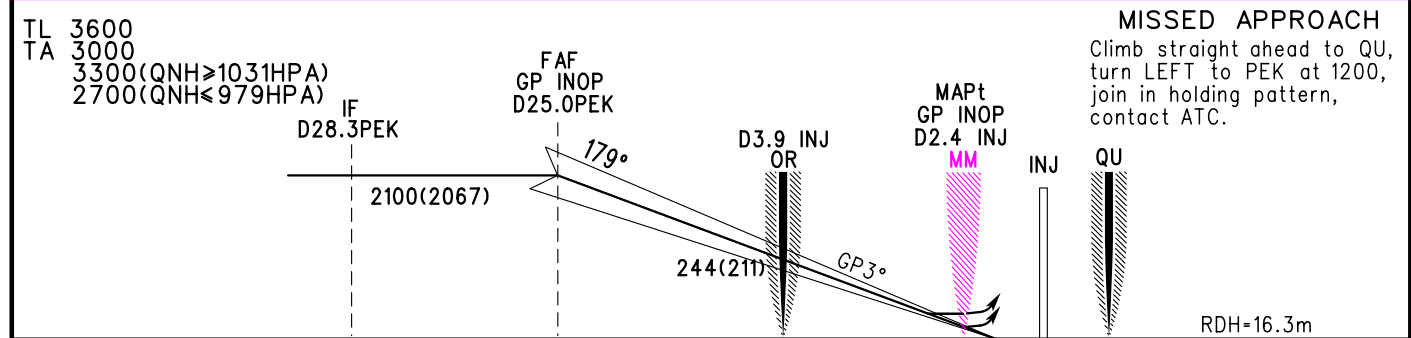
# INSTRUMENT APPROACH CHART-ICAO

ATIS 127.6	119.0(125.05) AP01 (HO)
124.3(118.3) TWR01 (18R/36L)	126.1(129.0) AP02 (HO)
118.5(118.3) TWR02 (18L/36R)	120.6(125.05) AP03 (H24)
118.05(118.6) TWR03 (01/19)	119.7(129.0) AP04 (HO)
	125.50(124.70) AP08

**ZBAA BEIJING/Capital**  
ILS RWY18L



GP INOP	DME (INJ) (NM)	15	13	11	9	7	5	3
	ALT (m)	1330	1136	941	746	551	354	155



**MISSED APPROACH**  
Climb straight ahead to QU, turn LEFT to PEK at 1200, join in holding pattern, contact ATC.

	A	B	C	D	FAF-MAPt(GP INOP) 38.2km						
ILS/DME DA(H) RVR/VIS	93(60) 550/800		93(60) 600/800		GS in kt	80	100	120	140	160	180
GP INOP MDA(H) VIS	155(122) 1200	155(122) 1600	155(122) 2000		kmH	150	185	220	260	295	335
CIRCLING MDA(H) VIS	210(175) 1600	265(230) 3200	265(230) 3600		Time min:sec	15:28	12:23	10:19	08:50	07:44	06:53
					Rate of descent m/s	2.2	2.7	3.2	3.8	4.3	4.9

Changes: Landing minima; MSA; NDB 'O' withdrawn.