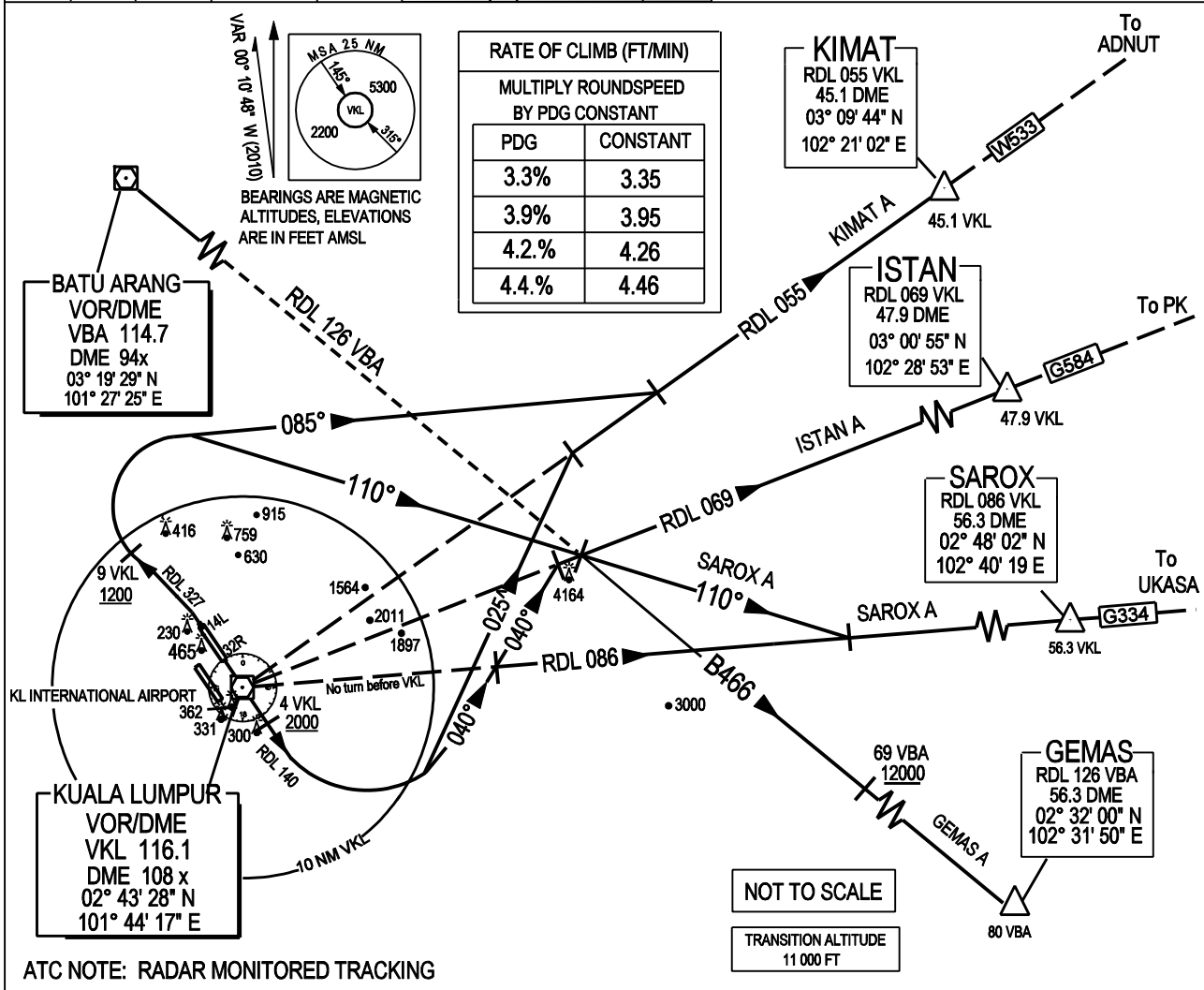


ATIS 126.45			APP N 124.2 MHz		LUMPUR GROUND		SEPANG / KL INTERNATIONAL AIRPORT RWY 14L / 32R DEPARTURES EAST
14L/32R	TWR	118.8	(SECONDARY)	121.25 MHz	APRONS (MN, MS, ME & MW)	122.15	
	GND	121.65			APRONS (SE & SS)	122.275	
14R/32L	TWR	118.5	APP S	119.45 MHz	APRONS (SN & SW)	122.85	
	GND	121.8	(SECONDARY)	125.1 MHz	APRONS (CN,CE,CW)	123.25	
					APRONS (CS)	121.8	



KIMAT ALPHA DEPARTURE
ISTAN ALPHA DEPARTURE

SAROX ALPHA DEPARTURE
GEMAS ALPHA DEPARTURE

RWY 14L - CONTACT APP S AFTER AIRBORNE

- PDG: FOR KIMAT A: 4.4% TO 3100 FT - OBSTACLES /TRAFFIC /CTA
- FOR ISTAN A: 4.4% TO 3200 FT - OBSTACLES /TRAFFIC /CTA
- FOR SAROX A: 4.2% TO 3800 FT - OBSTACLES/TRAFFIC/CTA
- TRACK 146° TO VKL VOR, THENCE RDL 140 FROM VKL VOR
- AT OR ABOVE 2000 FT OR AT 4 DME VKL
- TURN LEFT
- FOR KIMAT A
- TRACK 025°
- INTERCEPT RDL 055 OUTBOUND FROM VKL VOR TO KIMAT
- FOR ISTAN A
- TRACK 040°
- INTERCEPT RDL 069 OUTBOUND FROM VKL VOR TO ISTAN
- FOR SAROX A
- TRACK 040°
- INTERCEPT RDL 086 OUTBOUND FROM VKL VOR TO SAROX

CAUTION: - CLIMB TO INITIAL ALTITUDE 6000 FT.
- CONTACT "LUMPUR APPROACH" NOT LATER THAN 2000 FT AFTER AIRBORNE ;

REPORT: - ASSIGNED SID - ALTITUDE PASSING TO THE NEAREST 100 FT - INITIAL ALTITUDE CLIMBING TO.

RWY 32R - CONTACT APP N AFTER AIRBORNE

- PDG: FOR KIMAT A, ISTAN A, SAROX A: 3.9% TO 2700 FT - OBSTACLE/TRAFFIC/CTA
- FOR GEMAS A: 4.4% TO 11500 FT - OBSTACLE /TRAFFIC /CTA
- TRACK ON RDL 327 FROM VKL VOR
- AT 9 DME VKL, NOT BELOW 12000 FT
- TURN RIGHT
- FOR KIMAT A
- TRACK 085°
- INTERCEPT RDL 055 OUTBOUND FROM VKL VOR TO KIMAT
- FOR ISTAN A
- TRACK 110°
- INTERCEPT RDL 069 OUTBOUND FROM VKL VOR TO ISTAN
- FOR SAROX A
- TRACK 110°
- INTERCEPT RDL 086 OUTBOUND FROM VKL VOR TO SAROX
- FOR GEMAS A
- TRACK 110°
- INTERCEPT RDL 126 OUTBOUND FROM VBA VOR TO GEMAS
- CROSS 69 DME VBA NOT BELOW 12000 FT

VERTICAL RESTRICTIONS:
ADHERE TO VERTICAL RESTRICTIONS eg. 1500 FT = NOT BELOW 1500 FT ON CLIMB UNLESS SPECIFICALLY CANCELLED BY ATC.