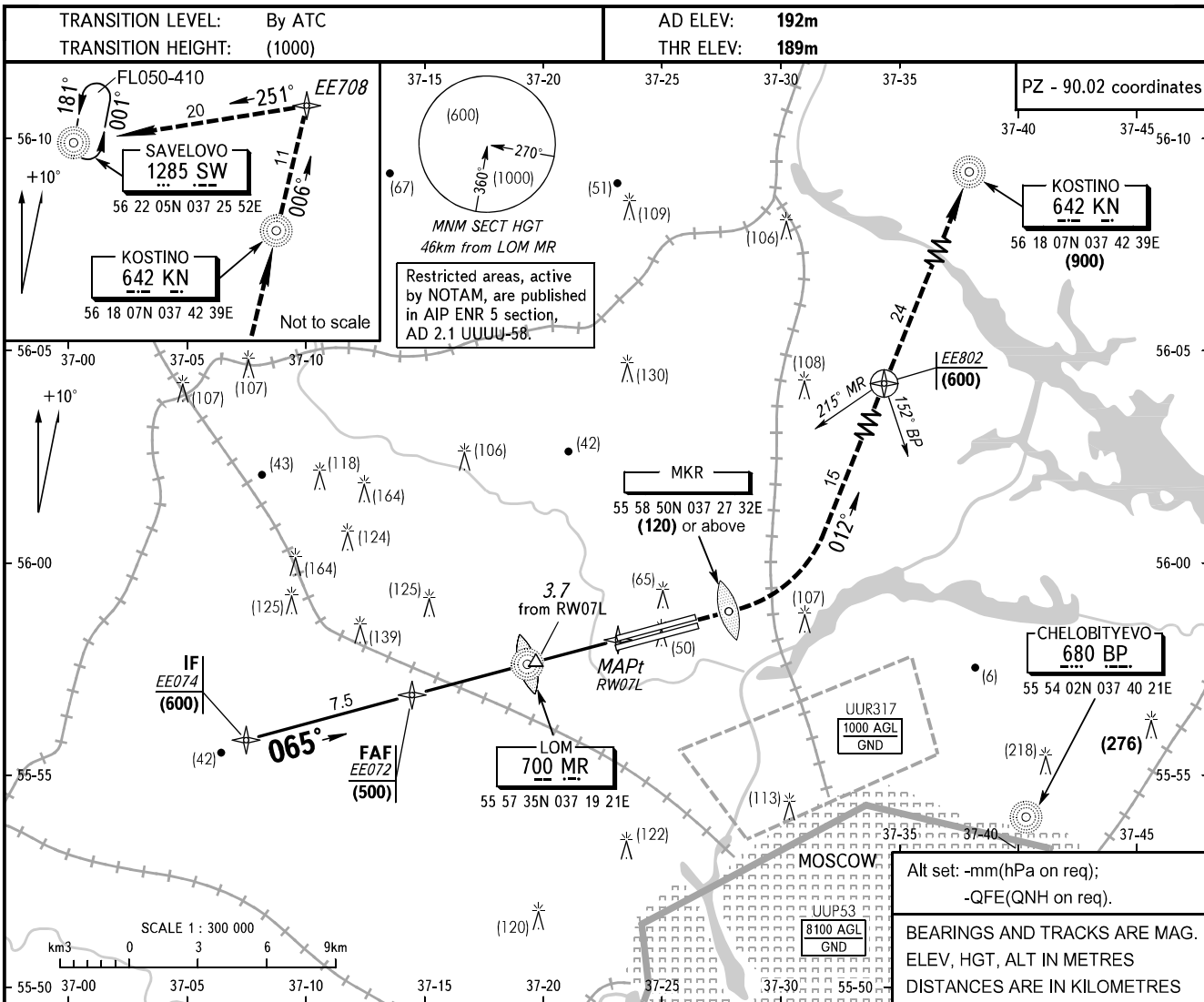


**INSTRUMENT
APPROACH
CHART - ICAO**

MOSCOW	APPROACH	122.700
SHEREMETYEVO	RADAR	118.100
	TOWER RWY 07R/25L	120.700
	RWY 07L/25R	131.500

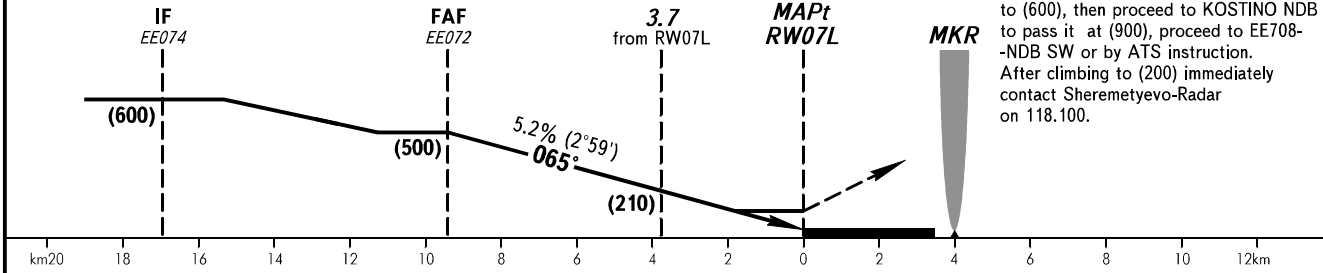
**MOSCOW, RUSSIA
SHEREMETYEVO
RNAV (GNSS) RWY 07L**



DISTANCE to MAPt	9.0	7.0	5.0	2.0
HGT	(485)	(305)	(275)	(120)

Alt set: -mm(hPa on req);
-QFE(QNH on req).
BEARINGS AND TRACKS ARE MAG. ELEV, HGT, ALT IN METRES
DISTANCES ARE IN KILOMETRES

MISSED APPROACH
Climb straight ahead to (120) or above to MKR, turn LEFT to EE802 climbing to (600), then proceed to KOSTINO NDB to pass it at (900), proceed to EE708-NDB SW or by ATS instruction. After climbing to (200) immediately contact Sheremetyevo-Radar on 118.100.



OCA/H		A	B	C	D							
Straight-in	RNAV (GNSS)	294(105)	294(105)	294(105)	295(106)							
GROUND SPEED	km/h	150	180	210	240	270	300	330	360	390	420	450
FAF-MAPt 9310m	min:sec	3.43	3.06	2.40	2.20	2.04	1.52	1.42	1.33	1.26	1.20	1.14
RATE OF DESCENT	m/s	2.2	2.6	3.1	3.5	3.9	4.3	4.8	5.2	5.6	6.0	6.5

CHANGE: LOM PSN, HGT