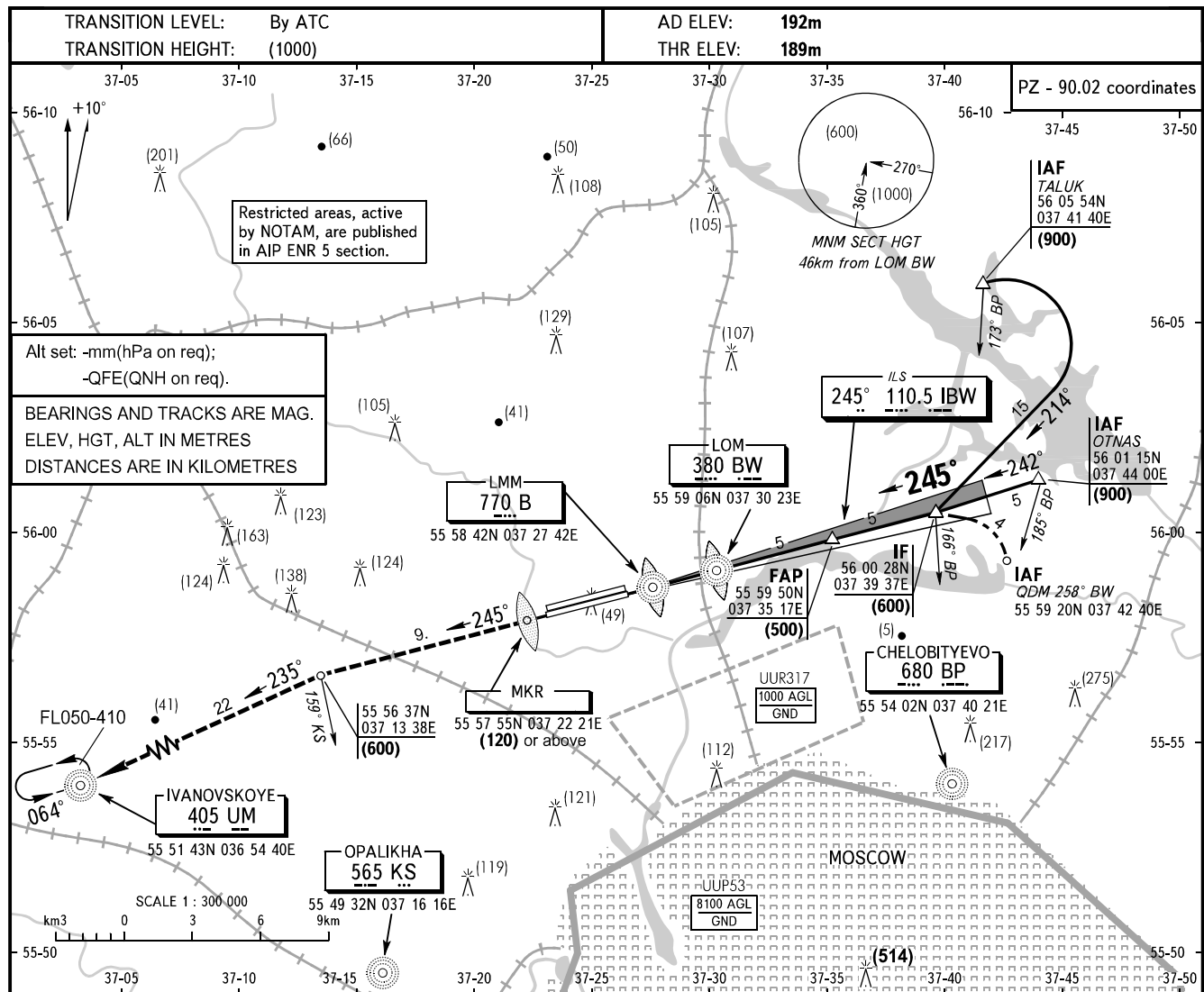


**INSTRUMENT
APPROACH
CHART - ICAO**

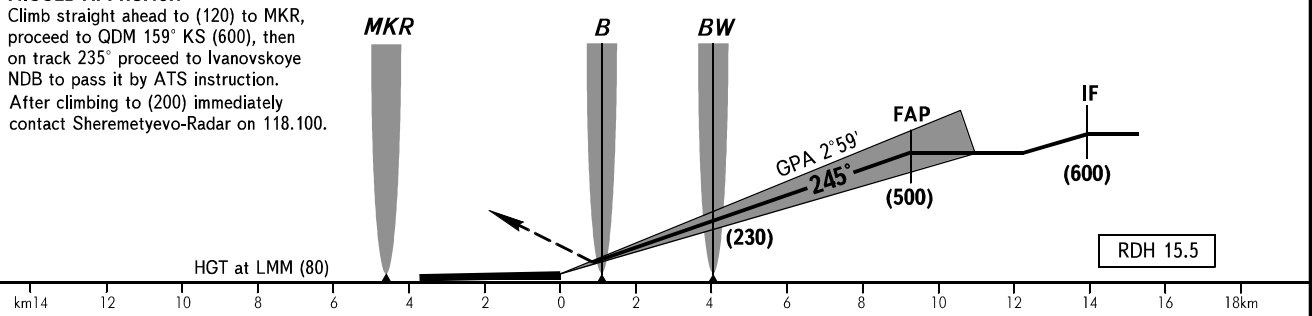
MOSCOW	APPROACH 2	127.200
SHEREMETYEVO	RADAR	118.100
	TOWER	RWY 07R/25L 120.700
		RWY 07L/25R 131.500

**MOSCOW, RUSSIA
SHEREMETYEVO
ILS, PAR RWY 25L**



MISSED APPROACH

Climb straight ahead to (120) to MKR, proceed to QDM 159° KS (600), then on track 235° proceed to Ivanovskoye NDB to pass it by ATS instruction. After climbing to (200) immediately contact Sheremetyevo-Radar on 118.100.



OCA/H		A	B	C	D
Straight-in	PAR	249(60)	252(63)	255(66)	258(69)
	CAT I	233(44)	236(47)	240(51)	244(55)
Approach	CAT II	205(16)	208(19)	212(23)	216(27)

WARNING
Interference on glide path shall be expected under VMC.

GROUND SPEED	km/h	150	180	210	240	270	300	330	360	390	420	450
LOM-THR 4033m	min:sec	1.38	1.22	1.10	1.02	0.55	0.49	0.45	0.41	0.38	0.35	0.33
RATE OF DESCENT	m/s	2.2	2.6	3.1	3.5	3.9	4.3	4.8	5.2	5.6	6.0	6.5