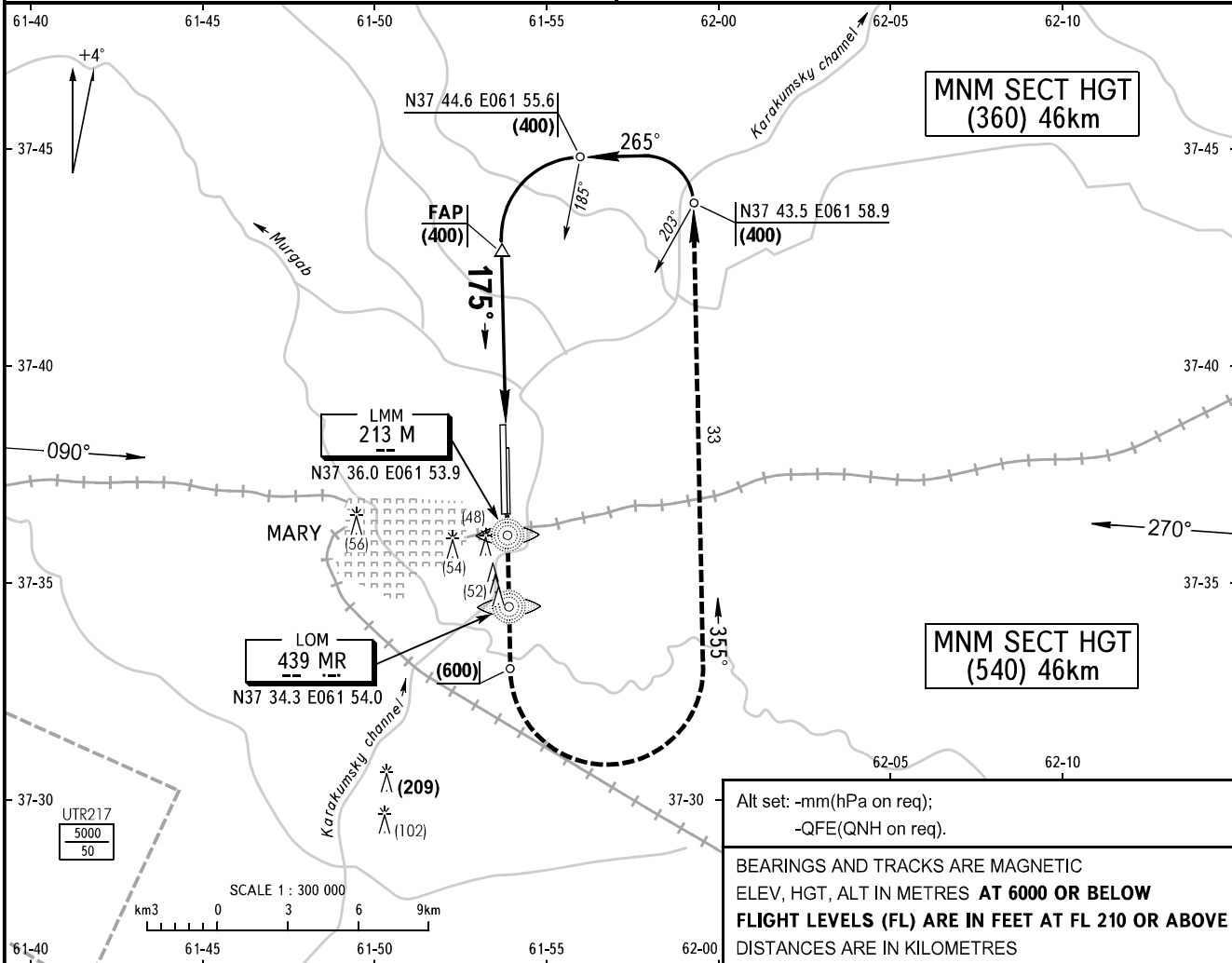


**INSTRUMENT
APPROACH
CHART - ICAO**

MARY, TURKMENISTAN
MARY
NDB RWY 18L

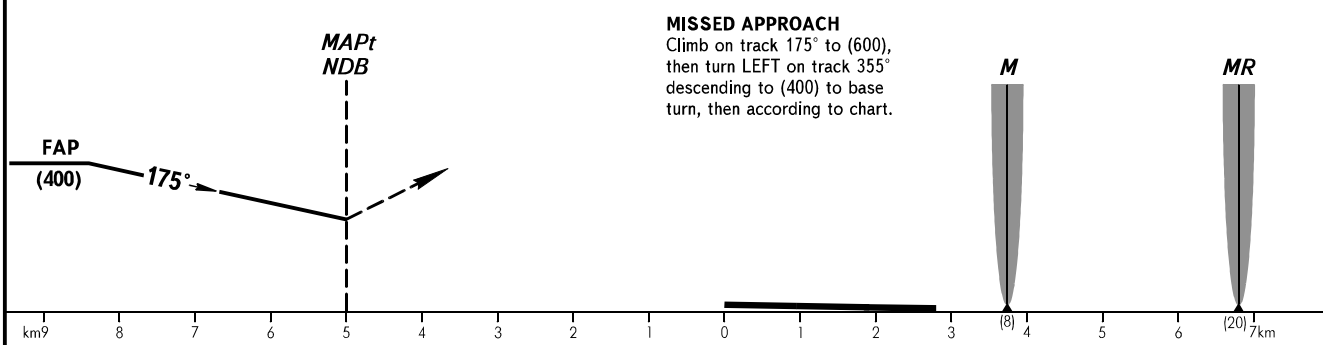
RADAR	124.0
TOWER	122.2

TRANSITION LEVEL:	1500	AD ELEV:	222.0m
TRANSITION HEIGHT:	(900)	THR ELEV:	222.0m



Alt set: -mm(hPa on req);
-QFE(QNH on req).

BEARINGS AND TRACKS ARE MAGNETIC
ELEV, HGT, ALT IN METRES **AT 6000 OR BELOW**
FLIGHT LEVELS (FL) ARE IN FEET AT FL 210 OR ABOVE
DISTANCES ARE IN KILOMETRES



OCA/H		A	B	C	D							
Straight-in												
	Approach											
Approach	NDB	351(129)	351(129)	351(129)	351(129)							
		Only in the day-time										
GROUND SPEED	km/h	150	180	210	240	270	300	330	360	390	420	450
FAP-MAPt 2280m	min:sec	0.55	0.46	0.39	0.34	0.30	0.27	0.25	0.23	0.21	0.20	0.18
RATE OF DESCENT	m/s	1.8	2.2	2.6	2.9	3.3	3.7	4.0	4.3	4.8	5.0	5.6

WARNING
The elements of instrument approach procedure are determined by RWY 36R LMM M.