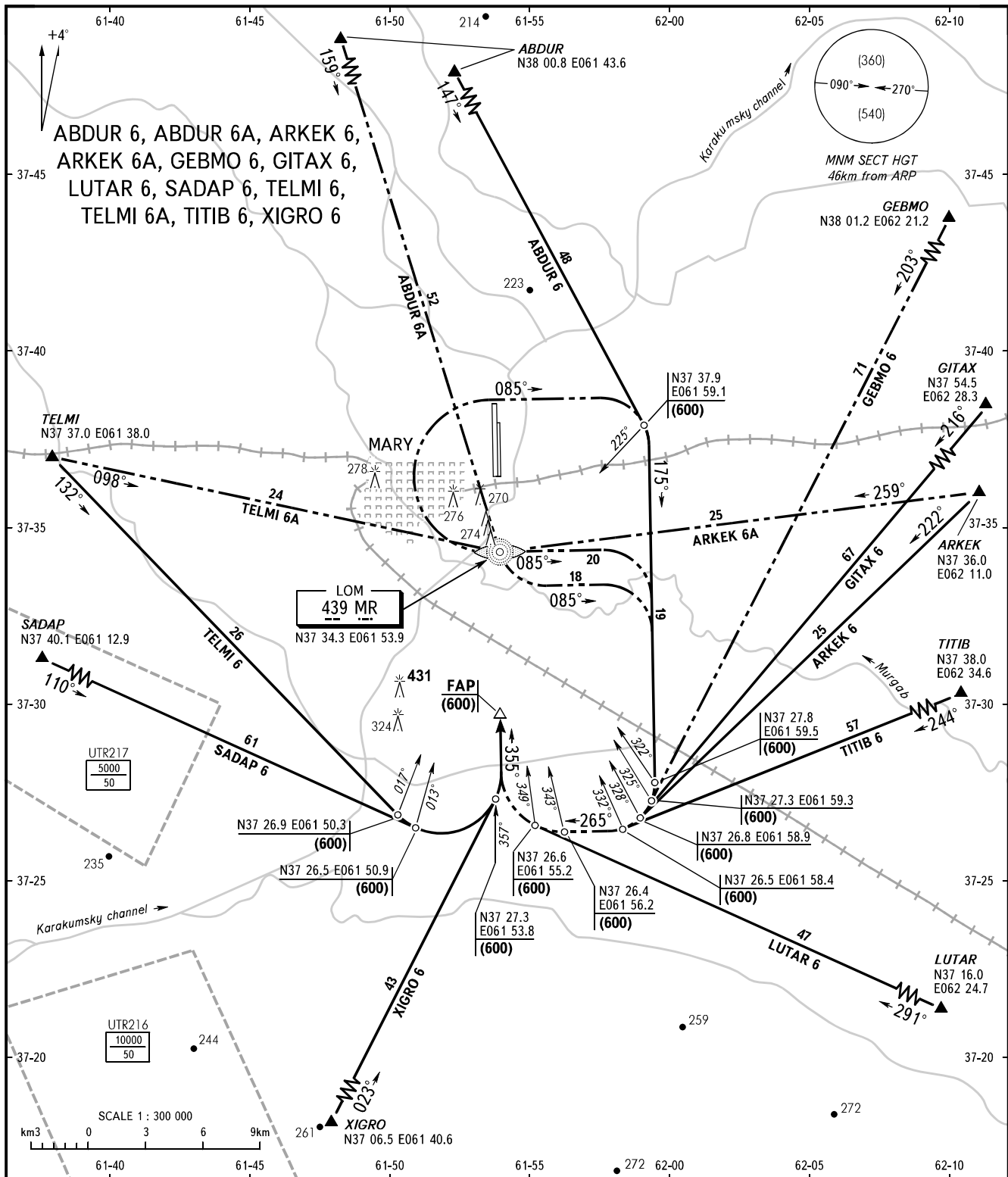


STANDARD ARRIVAL CHART
INSTRUMENT (STAR) - ICAO

TRANSITION
LEVEL: 1500

MARY, TURKMENISTAN
MARY
RWY 36L



RADAR
START 124.0
122.2

WARNING
Altitudes of crossing AWY exit
points are as directed by ATC.

BEARINGS AND TRACKS ARE MAGNETIC
ALTITUDES, HEIGHTS AND ELEVATIONS ARE IN METRES AT 6000 OR BELOW
DISTANCES ARE IN KILOMETRES
FLIGHT LEVELS (FL) ARE IN FEET AT FL 210 OR ABOVE