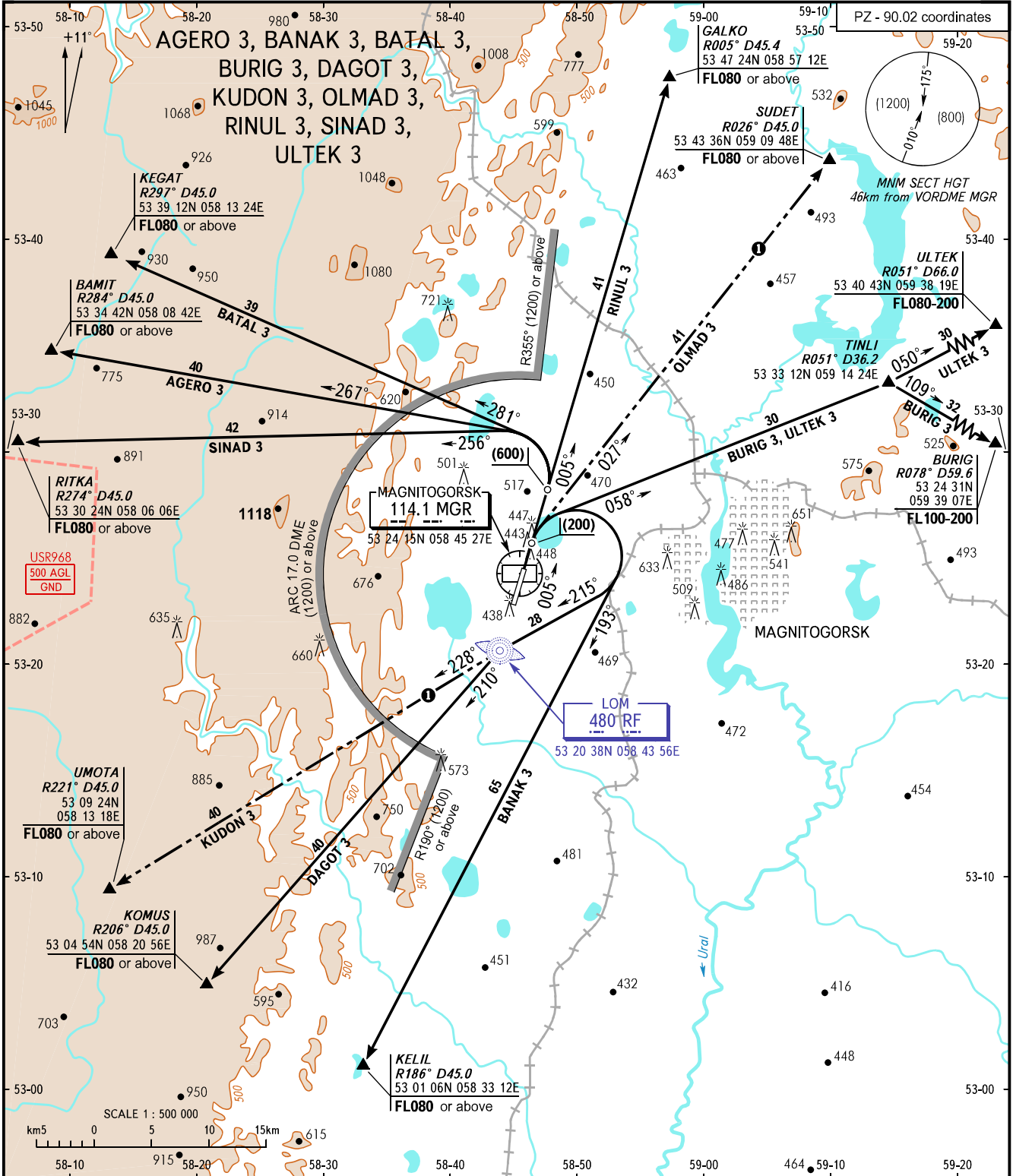


STANDARD DEPARTURE CHART  
INSTRUMENT (SID) - ICAO

TRANSITION  
HEIGHT : (1200)

MAGNITOGORSK, RUSSIA  
MAGNITOGORSK  
RWY 01



TOWER 120.800

① Only for Russian users of airspace.

**WARNING:**

- When flying along SID route BURIG 3, pass CRP TINLI below FL080 by ATS unit coordination.
- Climbing to (1200) from the commencement of the initial turn to CRP RITKA, BAMIT, KEGAT shall be carried out with climb gradient 6.0%.

|               |      |     |     |     |     |     |     |     |     |
|---------------|------|-----|-----|-----|-----|-----|-----|-----|-----|
| Ground Speed  | km/h | 200 | 250 | 300 | 350 | 400 | 450 | 500 | 550 |
| Rate of climb | m/s  | 3.4 | 4.2 | 5.0 | 5.8 | 6.7 | 7.5 | 8.3 | 9.2 |

If unable to climb with climb gradient 6.0%, then proceed by turning right via LOM.

BEARINGS AND TRACKS ARE MAGNETIC  
ALTITUDES, HEIGHTS AND ELEVATIONS ARE IN METRES  
DISTANCES ARE IN KILOMETRES