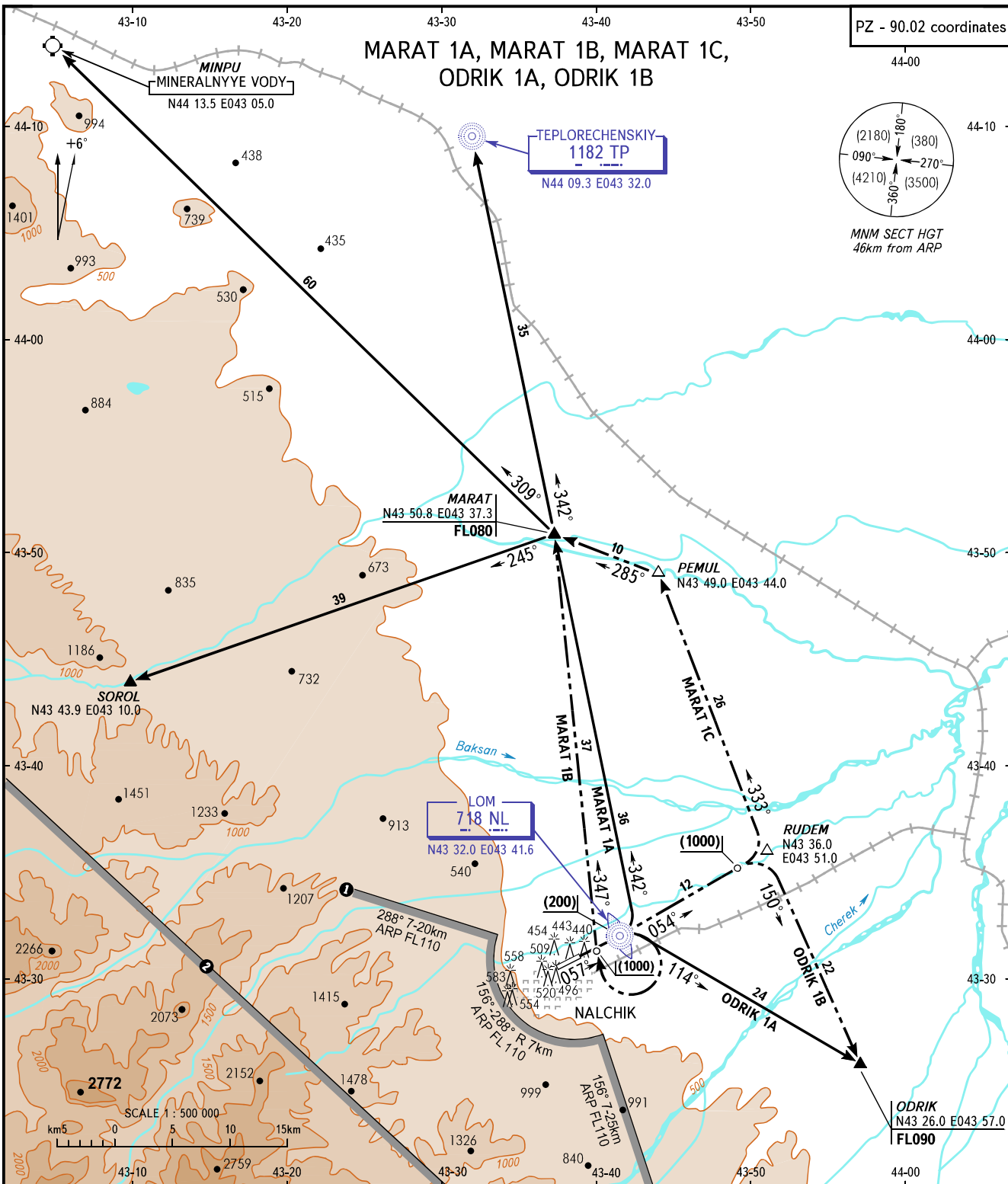


STANDARD DEPARTURE CHART  
INSTRUMENT (SID) - ICAO

TRANSITION  
HEIGHT : (1000)

NALCHIK, RUSSIA  
NALCHIK  
RWY 06



TOWER **118.3**  
APPROACH **126.9** (Additionally serves as RADAR)

**WARNING:**

- MARAT 1B, MARAT 1C and ODRIK 1B departure routes shall be used by ATC instruction.
- If it is impossible to provide climb gradient 4.9% for passing CPR MARAT at FL080 and CPR ODRIK at FL060, ACFT shall turn RIGHT climbing over LOM, then according to departure pattern.
- ① Line to the south of which IFR flights below FL110 are PROHIBITED.  
② Line to the south of which IFR flights below FL200 are PROHIBITED.

BEARINGS AND TRACKS ARE MAGNETIC  
ALTITUDES, HEIGHTS AND ELEVATIONS ARE IN METRES  
DISTANCES ARE IN KILOMETRES