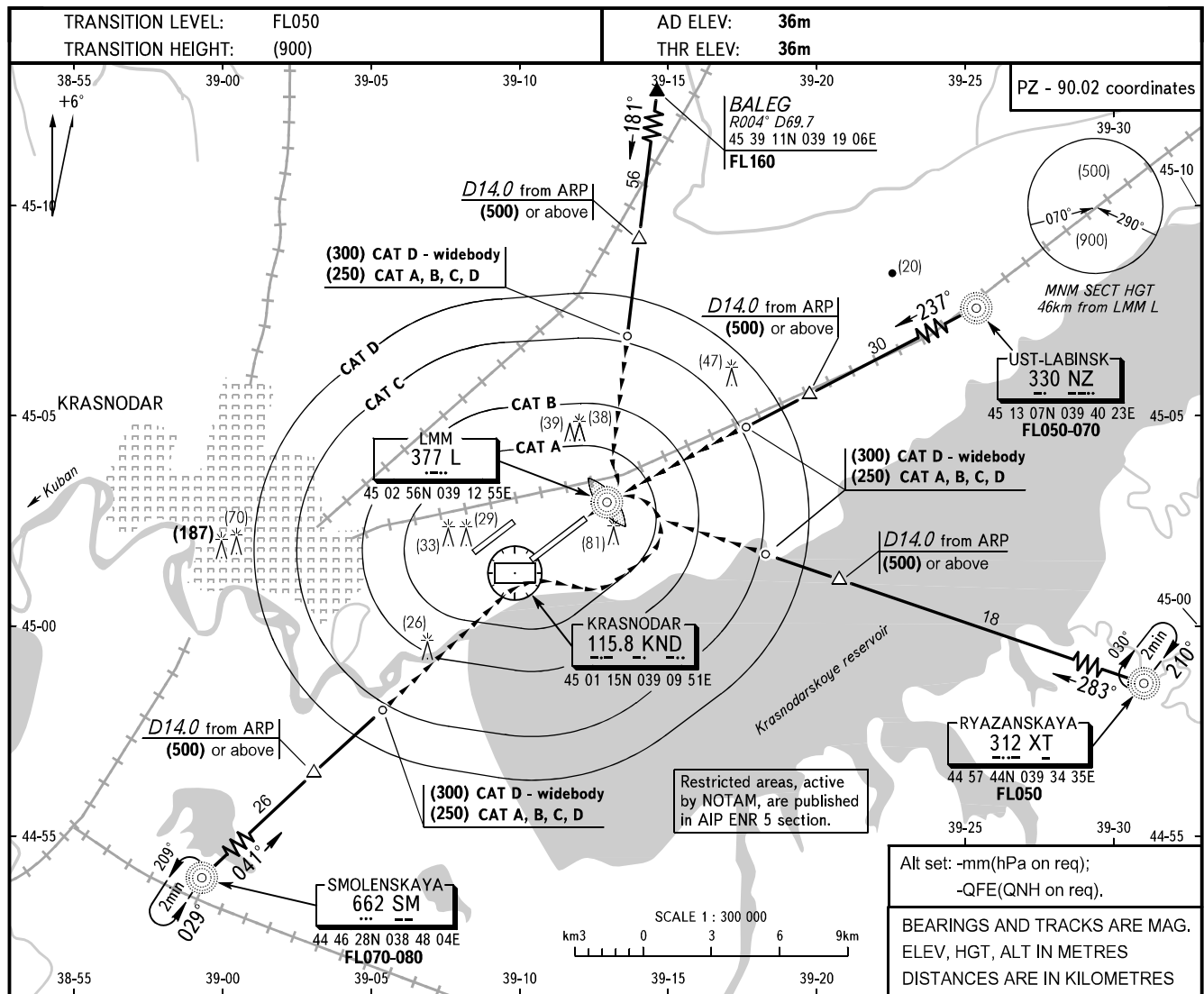


VISUAL  
APPROACH  
CHART - ICAO

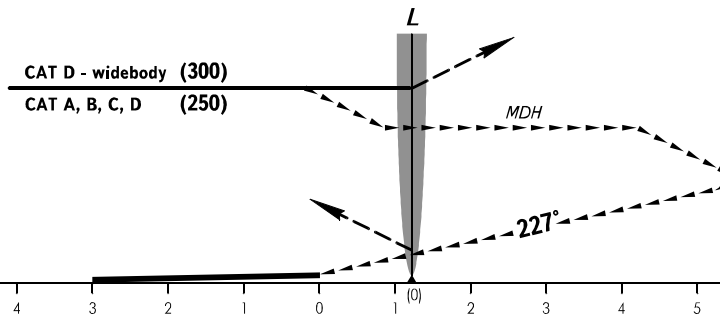
RADAR	121.300
TOWER	118.200

KRASNODAR, RUSSIA  
PASHKOVSKIY  
RWY 23L



**MISSED APPROACH**

Climb on track 227° to (200), then turn LEFT on track 047° climbing to (250/300) during VFR approach or (500) during IFR approach and then according to chart.



OCA/H		A	B	C	D	D-widebody	<b>WARNING:</b> 1. During visual manoeuvring flights over the city are PROHIBITED. 2. The radiuses of visual manoeuvring (circling) area for ACFT categories are as follows: A - 3120m B - 4980m C - 7850m D - 9790m
Visual Manoeuvring Area	RWY 23L	207(171)	207(171)	255(219)	255(219)	255(219)	
ACFT CAT		A	B	C	D	D-widebody	
MET conditions	MDH, m	180	180	220	220	300	
	Cloud base, m	300	300	350	350	400	
	Visibility, m	3000	3000	3000	4000	5000	