

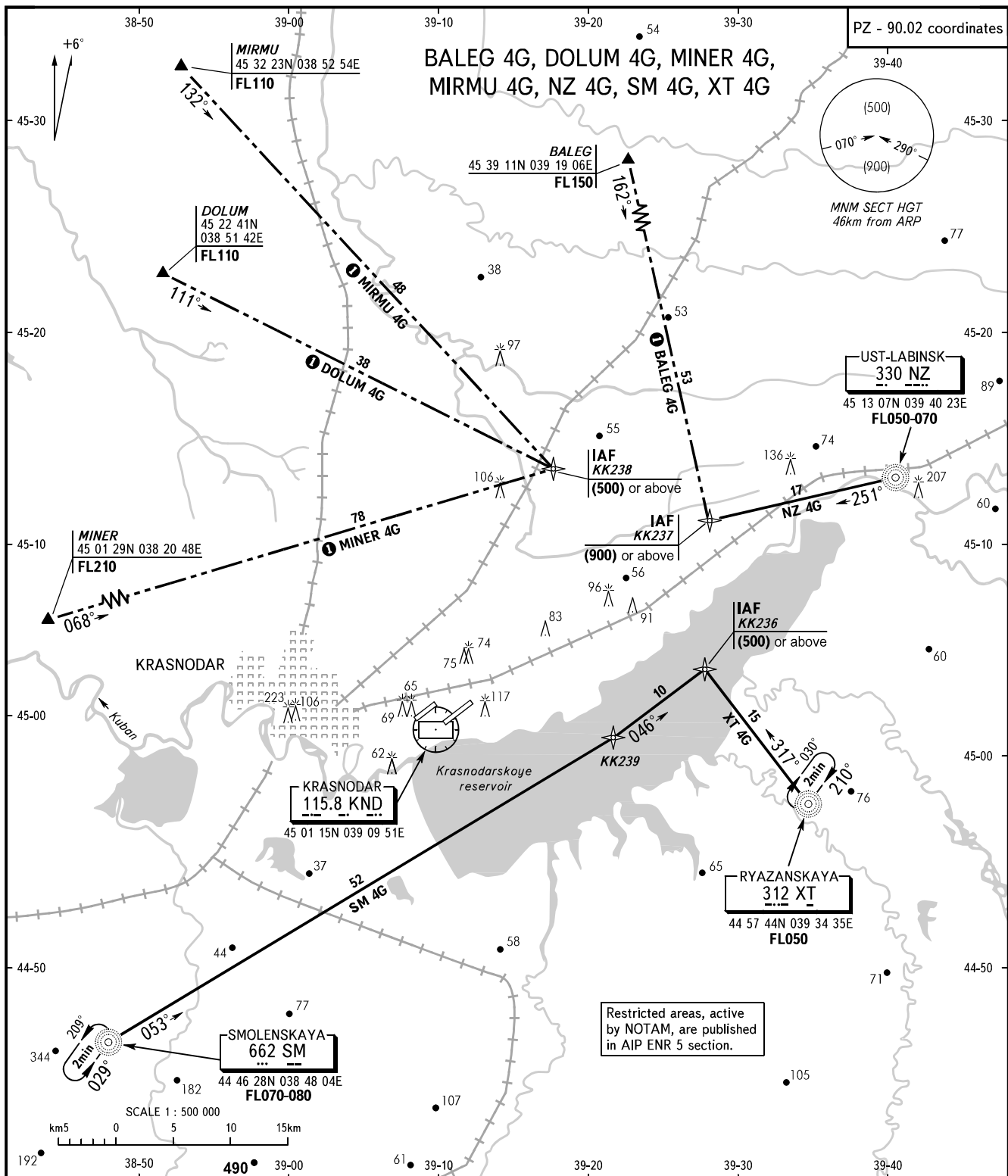
STANDARD ARRIVAL CHART  
INSTRUMENT (STAR) - ICAO

TRANSITION  
LEVEL: **FL050**

**KRASNODAR, RUSSIA**

PASHKOVSKIY

RNAV GNSS RWY 23L



Restricted areas, active by NOTAM, are published in AIP ENR 5 section.

APPROACH	129.6	127.7
RADAR	121.3	
TOWER	118.2	

**WARNING:**

- Arrival and approach-to-land using RNAV procedure based on navigation satellite system GLONASS-GPS are available in the presence of permission (license) given by Federal Air Transport Agency of Ministry of Transport of Russia.
- ACFT crew shall request the permission for GNSS approach from APP controller when passing reporting point of entry corridor.

**WARNING**

Only for Russian users of airspace.

BEARINGS AND TRACKS ARE MAGNETIC  
ALTITUDES, HEIGHTS AND ELEVATIONS ARE IN METRES  
DISTANCES ARE IN KILOMETRES