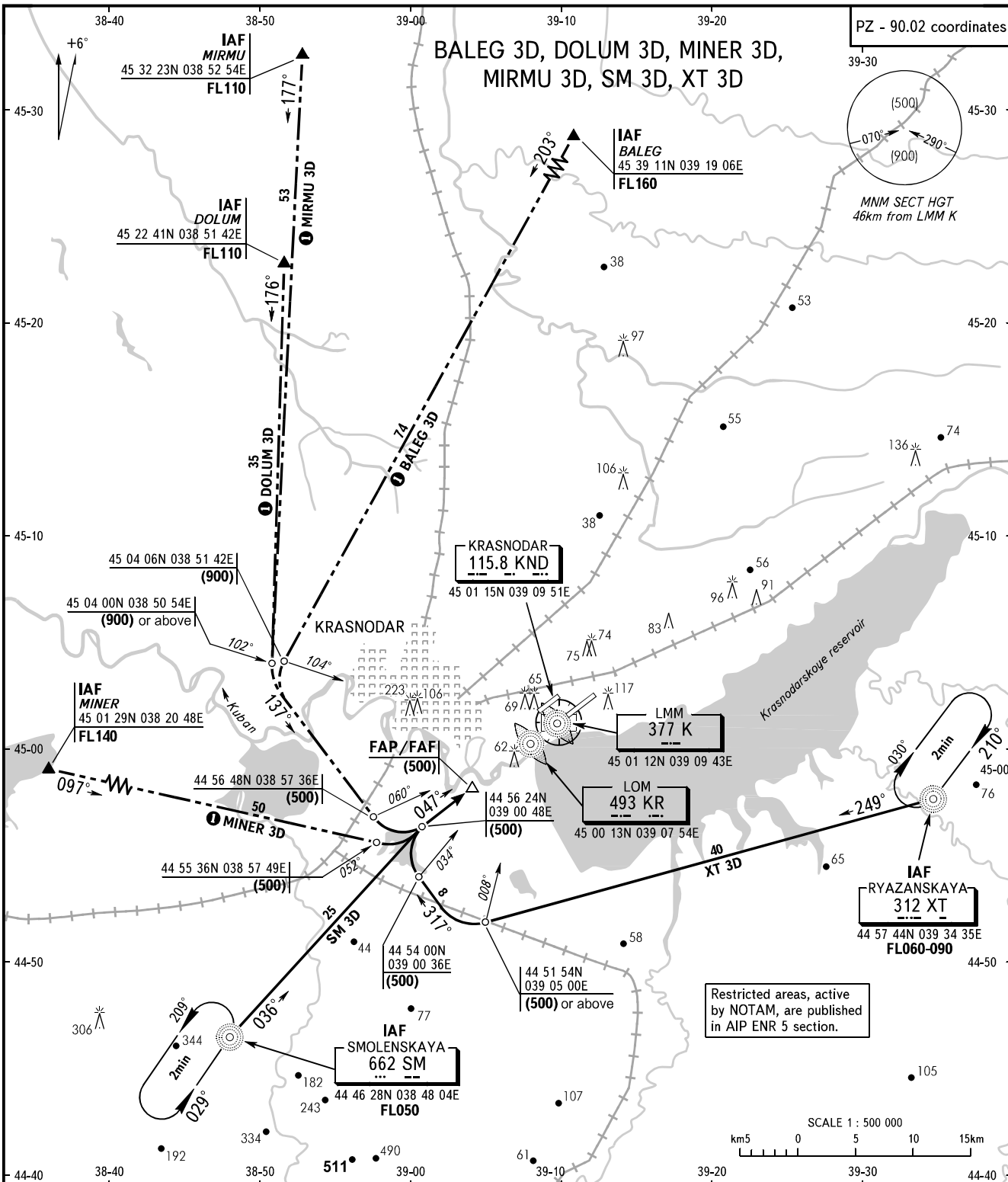


STANDARD ARRIVAL CHART
INSTRUMENT (STAR) - ICAO

TRANSITION
LEVEL : **FL050**

KRASNODAR, RUSSIA
PASHKOVSKIY
RWY 05R



APPROACH **129.600 127.700**
RADAR **121.300**
TOWER **118.200**

BEARINGS AND TRACKS ARE MAGNETIC
ALTITUDES, HEIGHTS AND ELEVATIONS ARE IN METRES
DISTANCES ARE IN KILOMETRES