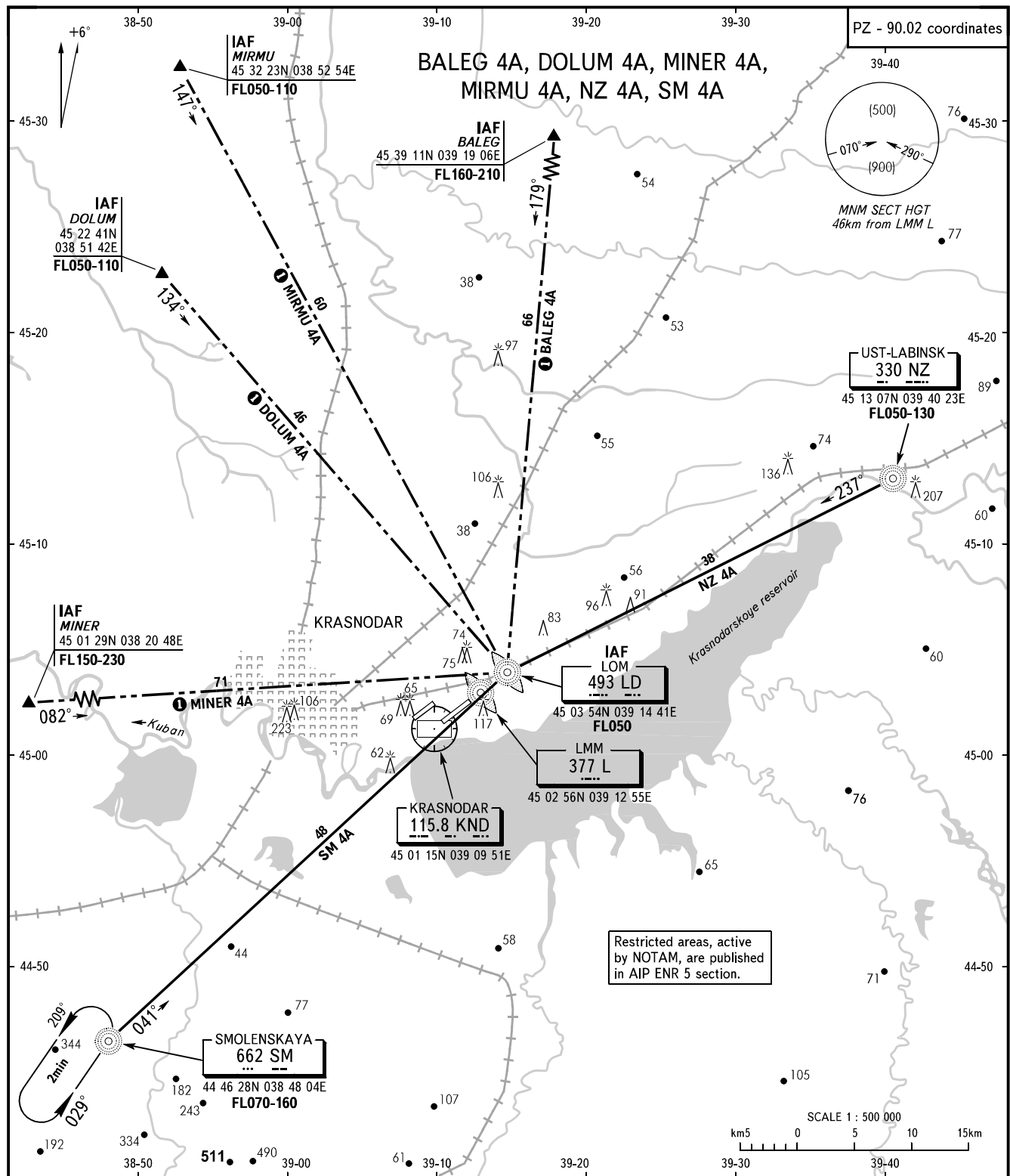


STANDARD ARRIVAL CHART
INSTRUMENT (STAR) - ICAO

TRANSITION
LEVEL : FL050

KRASNODAR, RUSSIA
PASHKOVSKIY
RWY 23L



APPROACH	129.600	127.700
RADAR	121.300	
TOWER	118.200	

BEARINGS AND TRACKS ARE MAGNETIC
ALTITUDES, HEIGHTS AND ELEVATIONS ARE IN METRES
DISTANCES ARE IN KILOMETRES

CHANGE: FREQ LMM