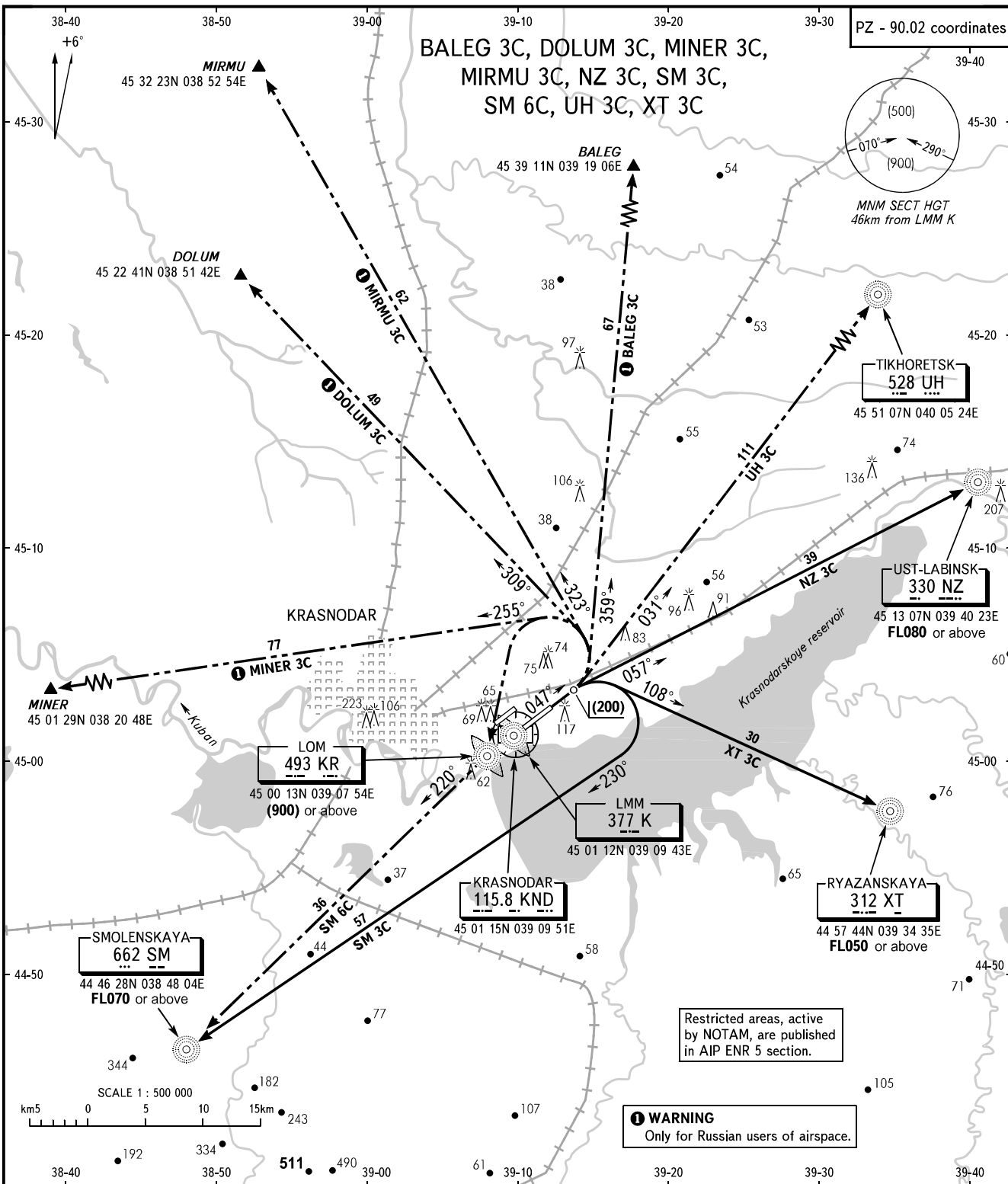


STANDARD DEPARTURE CHART  
INSTRUMENT (SID) - ICAO

TRANSITION  
HEIGHT : (900)

KRASNODAR, RUSSIA  
PASHKOVSKIY  
RWY 05R



TOWER **118.200**  
RADAR **121.300**  
APPROACH **129.600 127.700**

- WARNING:**
1. Proceed along NZ 3C route with climb gradient of not less than 5.7% up to FL080.
  2. Proceed along XT 3C route with climb gradient of not less than 4.4% up to FL050.

Ground speed	km/h	300	350	400	450	500	550
Climb gradient 3.3%							
Vertical speed	m/s	2.7	3.2	3.6	4.1	4.6	5.0
Climb gradient 4.4%							
Vertical speed	m/s	3.7	4.3	4.9	5.5	6.1	6.7
Climb gradient 5.7%							
Vertical speed	m/s	4.7	5.5	6.3	7.1	7.9	8.7

BEARINGS AND TRACKS ARE MAGNETIC  
ALTITUDES, HEIGHTS AND ELEVATIONS ARE IN METRES  
DISTANCES ARE IN KILOMETRES

CHANGE: FREQ LMM