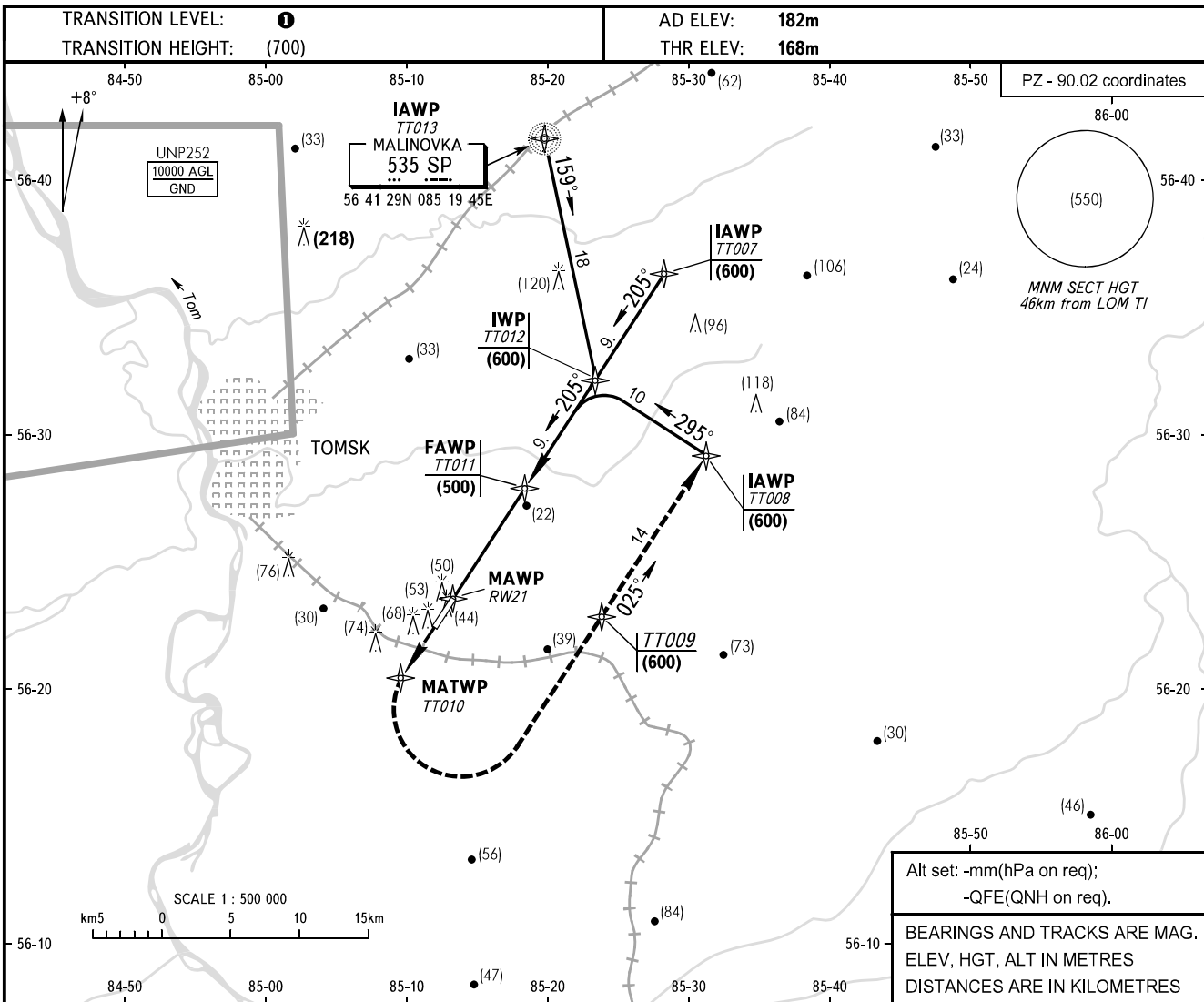


**INSTRUMENT  
APPROACH  
CHART - ICAO**

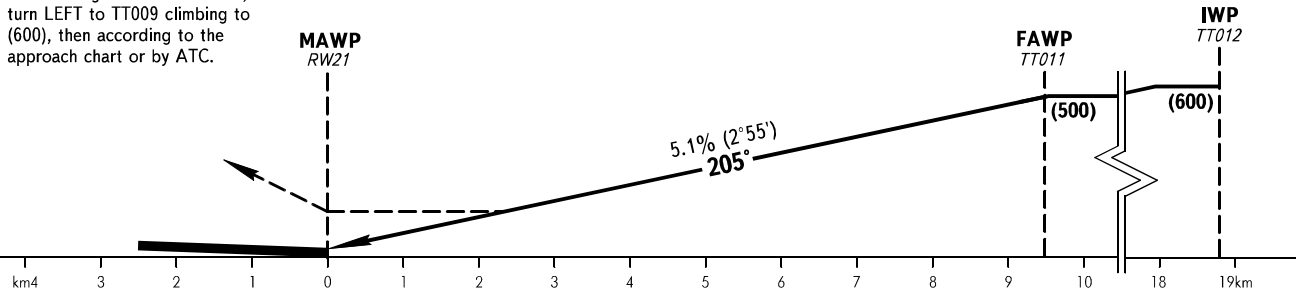
TOMSK KRUG **127.300**

**TOMSK, RUSSIA  
BOGASHEVO  
RNAV (GNSS) RWY 21**



**MISSED APPROACH**

Climb straight ahead to TT010, turn LEFT to TT009 climbing to (600), then according to the approach chart or by ATC.



OCA/H		A	B	C	D
Straight-in	<b>GNSS</b>	294(125)	294(125)	294(125)	294(125)
	Approach				

**1** TRANSITION LEVEL:  
- FL040 when atmospheric pressure is 743mm mercury column or above;  
- FL050 when atmospheric pressure is less than 743mm mercury column.

GROUND SPEED	km/h	150	180	210	240	270	300	330	360	390	420	450
MAWP - RW21	min:sec											
RATE OF DESCENT	m/s	2.1	2.5	3.0	3.4	3.8	4.2	4.7	5.1	5.5	5.9	6.4

CHANGE: New chart