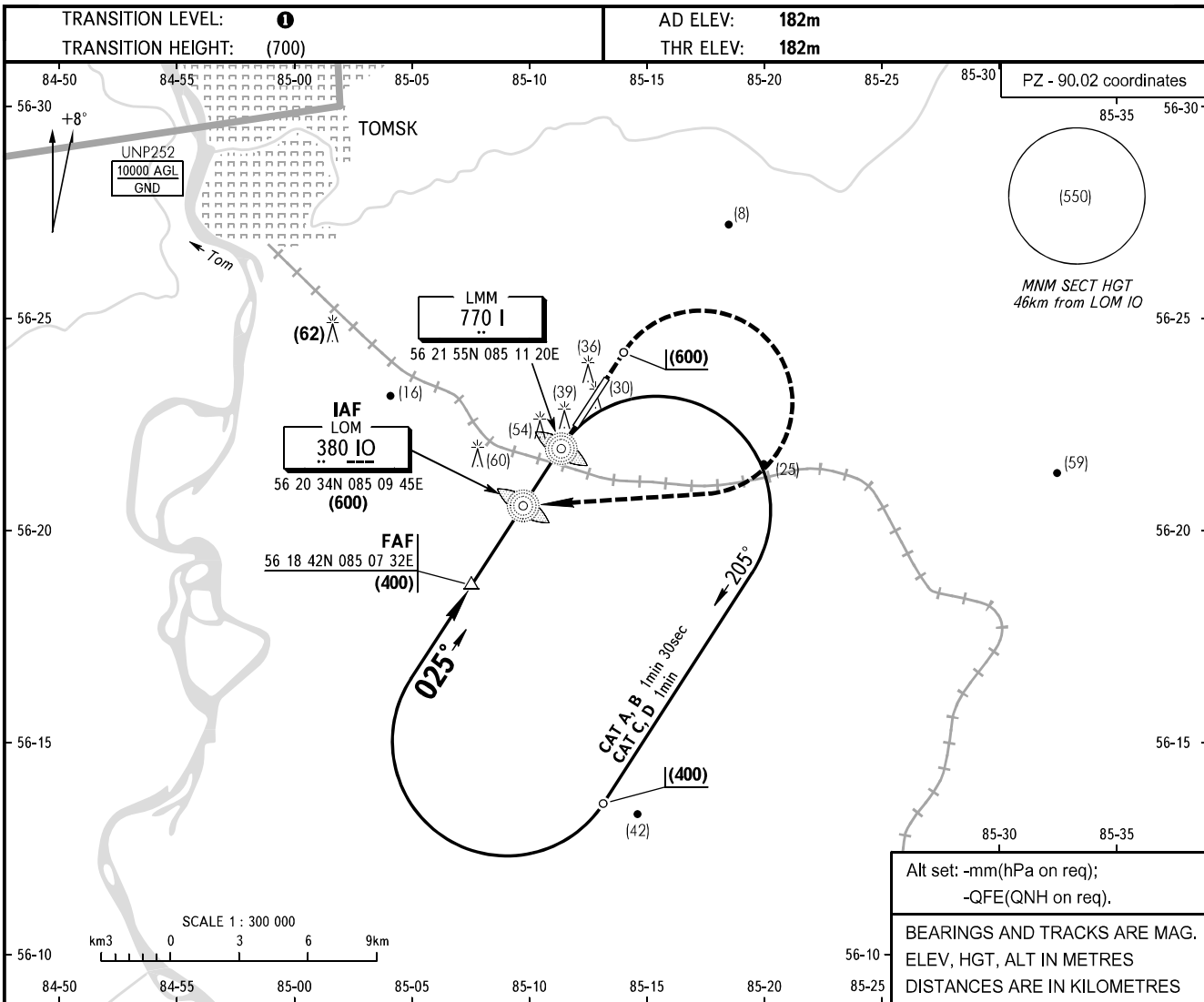


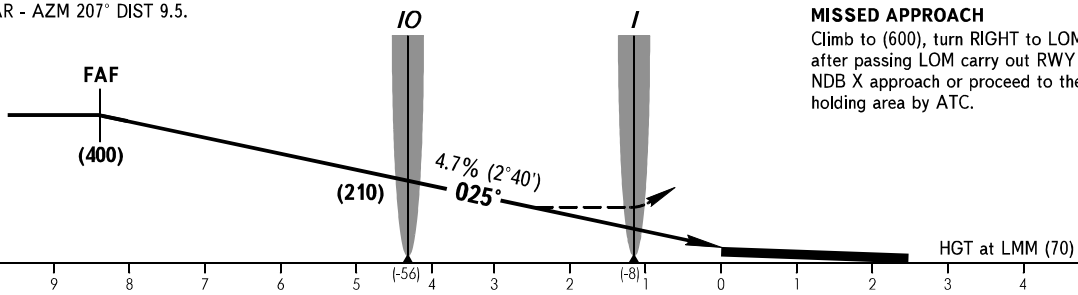
**INSTRUMENT
APPROACH
CHART - ICAO**

TOMSK KRUG **127.300**

TOMSK, RUSSIA
BOGASHEVO
2 NDB Z, NDB Z RWY 03



FAF is fixed by TAR - AZM 207° DIST 9.5.



MISSED APPROACH
Climb to (600), turn RIGHT to LOM,
after passing LOM carry out RWY 03
NDB X approach or proceed to the
holding area by ATC.

OCA/H		A	B	C	D								
Straight-in Approach	2 NDB	With FAF	296(114)	296(114)	296(114)	296(114)							
		WO FAF	296(114)	296(114)	296(114)	296(114)							
	NDB (LOM)	With FAF	311(129)	311(129)	311(129)	311(129)							
		WO FAF	311(129)	311(129)	311(129)	311(129)							
NDB (LMM)	With FAF	311(129)	311(129)	311(129)	311(129)								
	WO FAF	326(144)	326(144)	326(144)	326(144)								
GROUND SPEED		km/h	150	180	210	240	270	300	330	360	390	420	450
LOM-THR 4140m		min:sec	1.39	1.23	1.11	1.02	0.55	0.50	0.45	0.41	0.38	0.35	0.33
RATE OF DESCENT		m/s	2.0	2.3	2.7	3.1	3.5	3.9	4.3	4.7	5.1	5.5	5.9

1 TRANSITION LEVEL:
- FL040 when atmospheric pressure is 743mm mercury column or above;
- FL050 when atmospheric pressure is less than 743mm mercury column.

WARNING
GPWS may be brought into operation of short duration due to complex terrain on final between LOM and LMM.

CHANGE: New chart