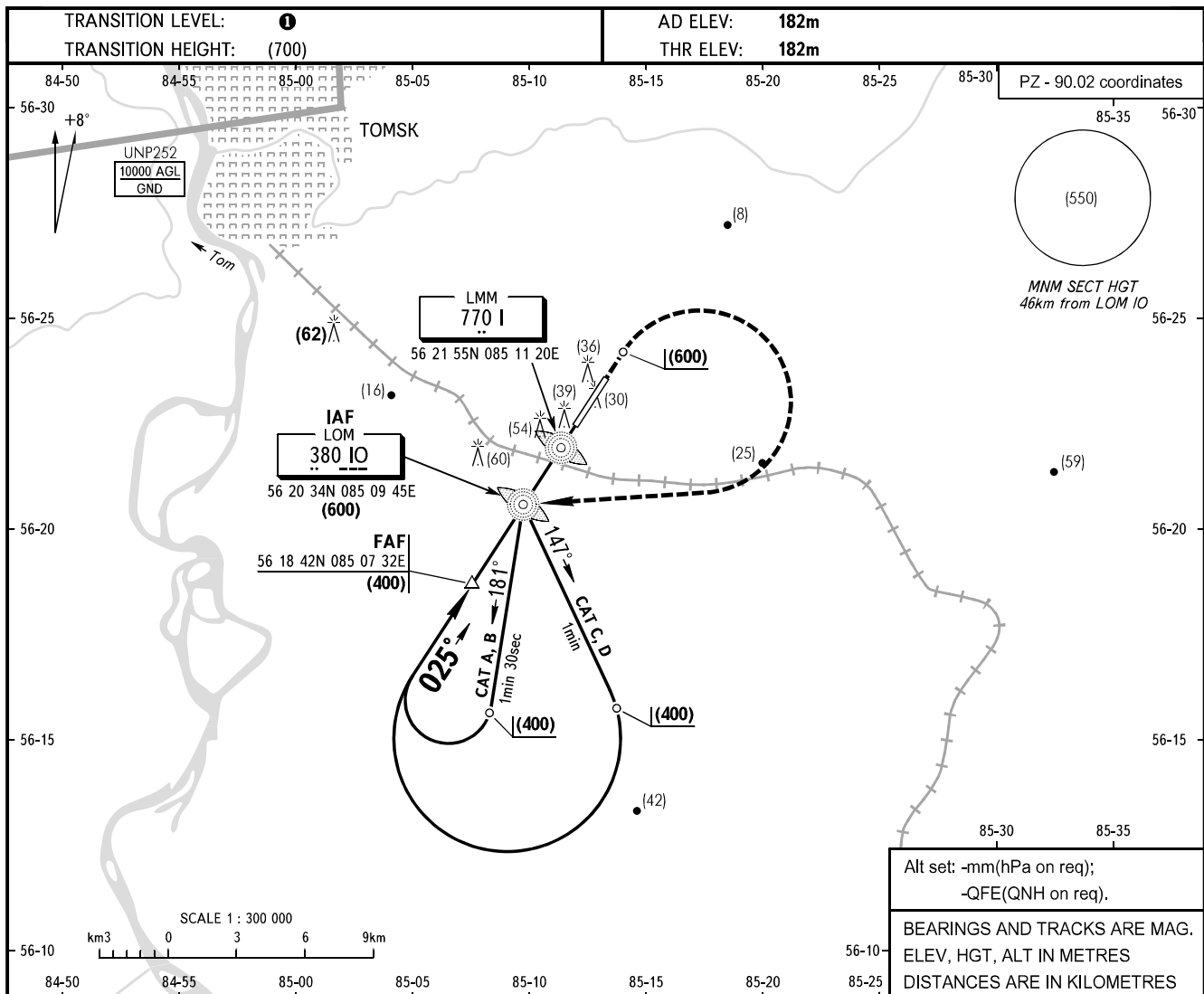


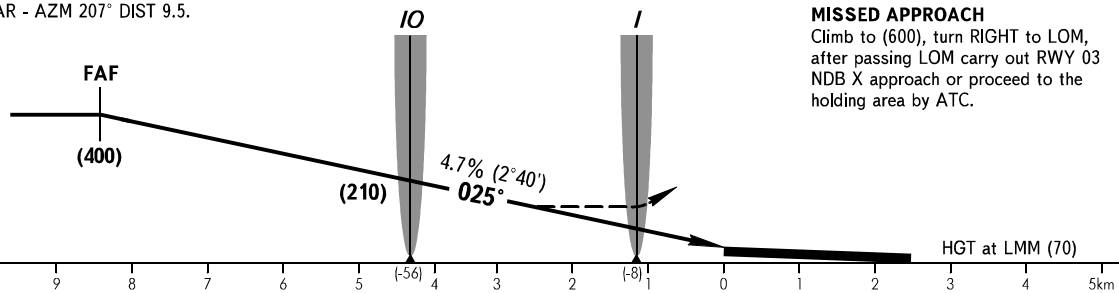
**INSTRUMENT
APPROACH
CHART - ICAO**

TOMSK KRUG 127.300

TOMSK, RUSSIA
BOGASHEVO
2 NDB Y, NDB Y RWY 03



FAF is fixed by TAR - AZM 207° DIST 9.5.



MISSED APPROACH
Climb to (600), turn RIGHT to LOM,
after passing LOM carry out RWY 03
NDB X approach or proceed to the
holding area by ATC.

OCA/H		A	B	C	D											
Straight-in Approach	2 NDB	With FAF	296(114)	296(114)	296(114)	296(114)	<p>① TRANSITION LEVEL: - FL040 when atmospheric pressure is 743mm mercury column or above; - FL050 when atmospheric pressure is less than 743mm mercury column.</p> <p>WARNING GPWS may be brought into operation of short duration due to complex terrain on final between LOM and LMM.</p>									
		WO FAF	311(129)	311(129)	311(129)	311(129)										
	NDB (LOM)	With FAF	311(129)	311(129)	311(129)	311(129)										
		WO FAF	326(144)	326(144)	326(144)	326(144)										
GROUND SPEED		km/h	150	180	210	240	270	300	330	360	390	420	450			
LOM-THR 4140m		min:sec	1.39	1.23	1.11	1.02	0.55	0.50	0.45	0.41	0.38	0.35	0.33			
RATE OF DESCENT		m/s	2.0	2.3	2.7	3.1	3.5	3.9	4.3	4.7	5.1	5.5	5.9			