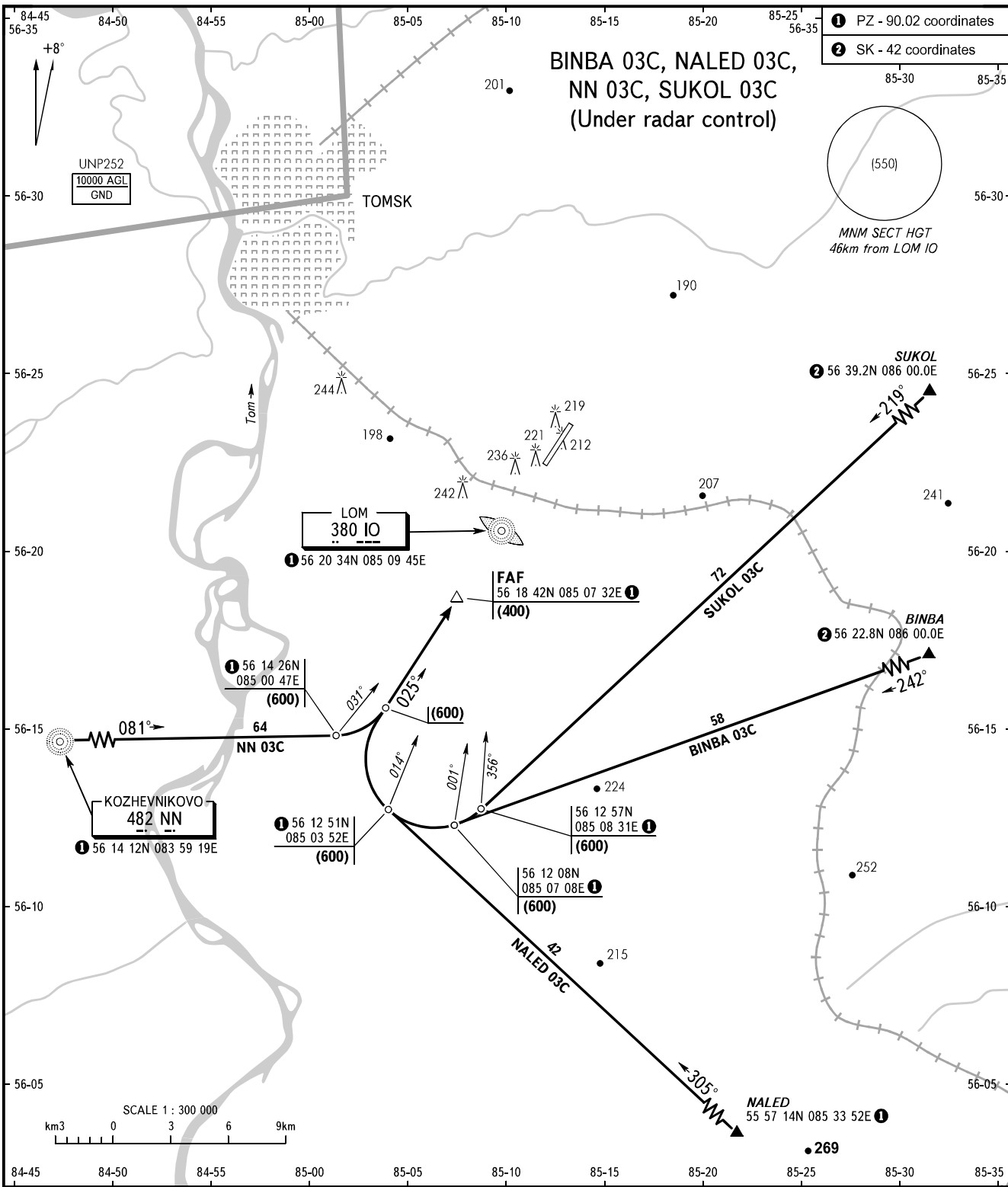


STANDARD ARRIVAL CHART
INSTRUMENT (STAR) - ICAO

TOMSK, RUSSIA
BOGASHEVO
RWY 03

TRANSITION
LEVEL : 3



TOMSK KRUG 127.300

- 3 TRANSITION LEVEL:
- FL040 when atmospheric pressure is 743mm mercury column or above;
 - FL050 when atmospheric pressure is less than 743mm mercury column.

- WARNING:**
1. FL for passing the exit points on ATS routes shall be assigned by ATC.
 2. STAR NALED 03C, NN 03C: descent to the final turn point is allowed on condition that transition level is reached before DIST 27km from RWY 03 extremity.
 3. STAR NN 03C: flight altitude shall be maintained by ATC instruction during training flights of state aviation.

BEARINGS AND TRACKS ARE MAGNETIC
ALTITUDES, HEIGHTS AND ELEVATIONS ARE IN METRES
DISTANCES ARE IN KILOMETRES

CHANGE: New chart