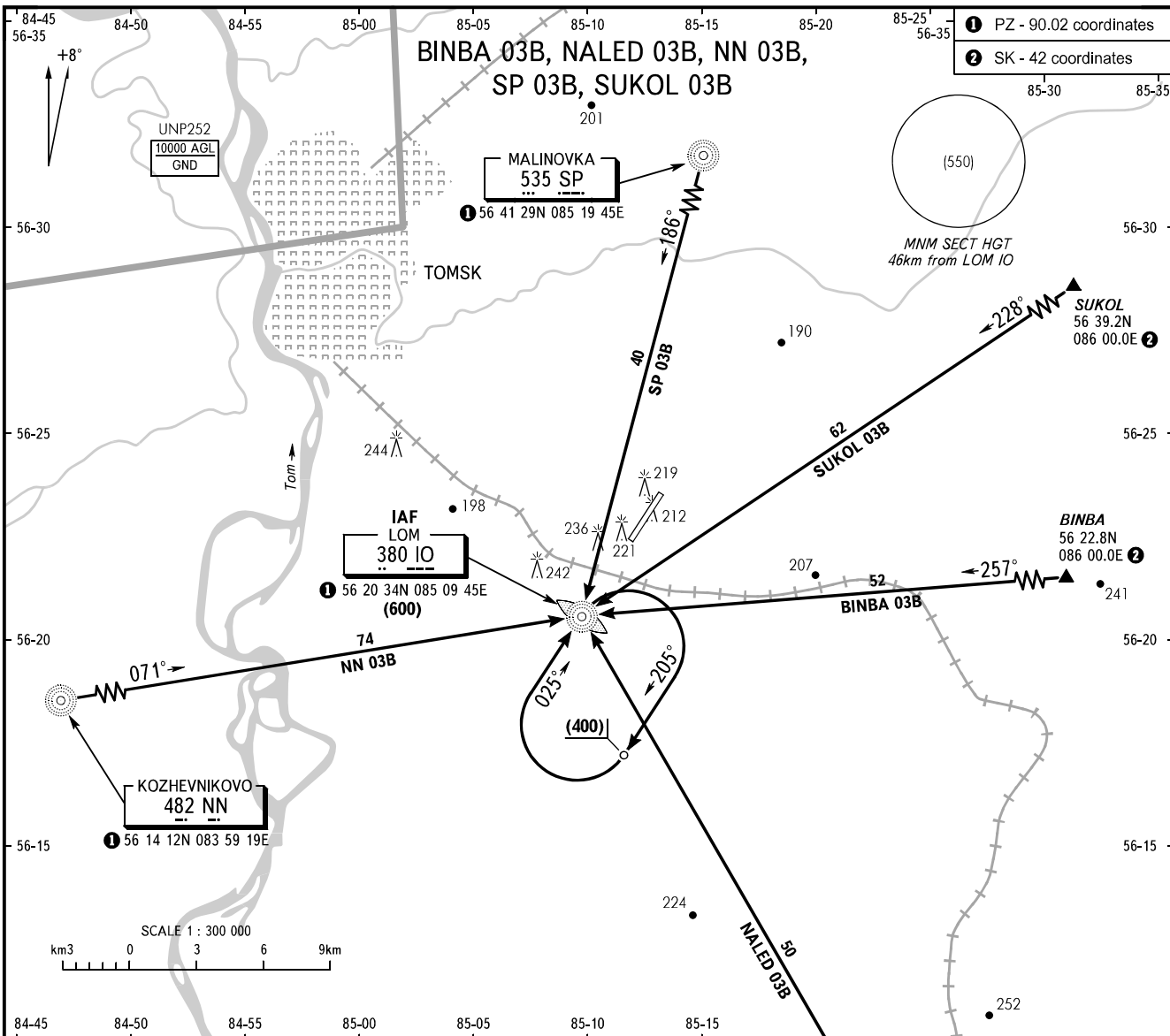


STANDARD ARRIVAL CHART
INSTRUMENT (STAR) - ICAO

TOMSK, RUSSIA
BOGASHEVO
RWY 03

TRANSITION
LEVEL : 3



STAR	ROUTE
SP 03B	Proceed to LOM IO. After passing LOM IO carry out instrument approach procedures "Y": CAT A, B ACFT shall proceed on track 181° for 1min 30sec; CAT C, D ACFT shall proceed on track 147° for 1min, then turn RIGHT to carry out approach.
BINBA 03B, SUKOL 03B	Proceed to LOM IO. After passing LOM IO carry out instrument approach procedures "X": CAT A, B ACFT shall proceed on track 229° for 1min 30sec; CAT C, D ACFT shall proceed on track 262° for 1min, then turn LEFT to carry out approach. When radar control is provided - proceed to base turn point.
NALED 03B	Proceed to LOM IO. After passing LOM IO carry out instrument approach procedures "X": CAT A, B ACFT shall proceed on track 229° for 1min 30sec; CAT C, D ACFT shall proceed on track 262° for 1min, then turn LEFT to carry out approach. When radar control is provided - proceed to final turn point.
NN 03B	Proceed to LOM IO. After passing LOM IO carry out instrument approach procedures "Z": turn RIGHT onto track 205° and fly for 1min 30sec; (CAT A, B ACFT) or for 1min (CAT C, D ACFT), then turn RIGHT to carry out approach. When radar control is provided - proceed to final turn point.

TOMSK KRUG 127.300

BEARINGS AND TRACKS ARE MAGNETIC
ALTITUDES, HEIGHTS AND ELEVATIONS ARE IN METRES
DISTANCES ARE IN KILOMETRES

3 TRANSITION LEVEL:
- FL040 when atmospheric pressure is 743mm mercury column or above;
- FL050 when atmospheric pressure is less than 743mm mercury column.

WARNING
FL for passing the exit points on ATS routes shall be assigned by ATC.

CHANGE: New chart