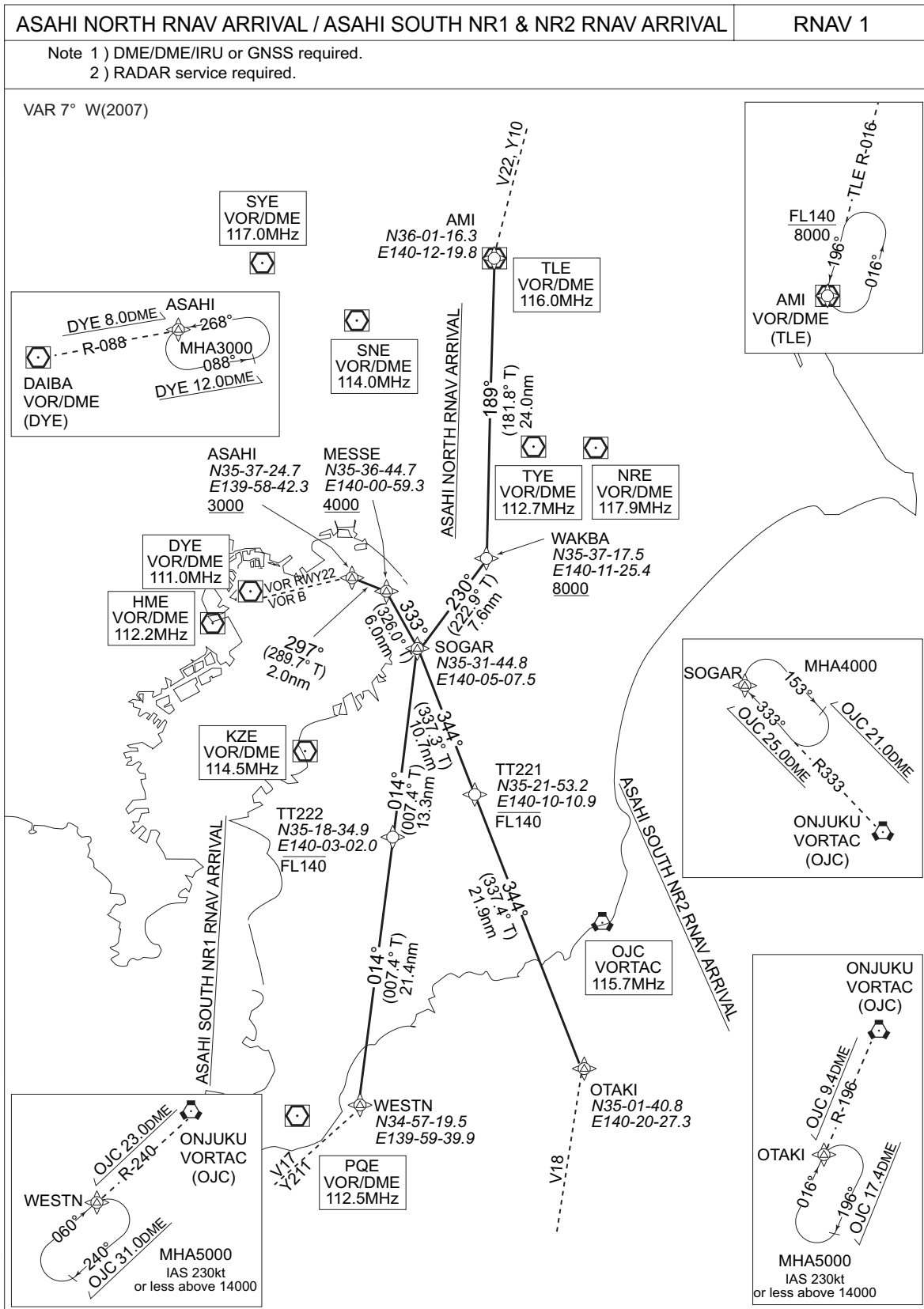


STANDARD ARRIVAL CHART-INSTRUMENT

RJTT / TOKYO INTL

RNAV STAR
RWY22



RJTT / TOKYO INTL

RNAV STAR
RWY22

ASAHI NORTH RNAV ARRIVAL

From TLE, to WAKBA at or above 8,000ft, to SOGAR, to MESSE at or above 4,000ft, to ASAHI at or above 3,000ft.

FIX	DESIGNATION	COORDINATES
	AMI (TLE)	360116.3N 1401219.8E
	WAKBA	353717.5N 1401125.4E
	SOGAR	353144.8N 1400507.5E
	MESSE	353644.7N 1400059.3E
ASAHI	353724.7N 1395842.3E	
Critical DME	-	
DME GAP	-	
Inappropriate Navaids	See General Rule 3. Inappropriate NAVAIDs for RNAV1	

Rcmd. Path Terminator	Fix ID (Waypoint Name)	Fly Over	Distance (NM)	MAG Track (TRUE Track)	Turn Direction	Altitude (ft.)	Speed Limit (kt)	Vertical Angle	Navigation Performance
IF	TLE	-	-	-	-	-	-	-	RNAV1
TF	WAKBA	-	24.0	189° (181.8°)	-	+8000	-	-	RNAV1
TF	SOGAR	-	7.6	230° (222.9°)	-	-	-	-	RNAV1
TF	MESSE	-	6.0	333° (326.0°)	-	+4000	-	-	RNAV1
TF	ASAHI	-	2.0	297° (289.7°)	-	+3000	-	-	RNAV1

ASAHI SOUTH NR1 RNAV ARRIVAL

From WESTN, to TT222 at or below FL140, to SOGAR, to MESSE at or above 4,000ft, to ASAHI at or above 3,000ft.

FIX	DESIGNATION	COORDINATES
	WESTN	345719.5N 1395939.9E
	TT222	351834.9N 1400302.0E
	SOGAR	353144.8N 1400507.5E
	MESSE	353644.7N 1400059.3E
ASAHI	353724.7N 1395842.3E	
Critical DME	-	
DME GAP	-	
Inappropriate Navaids	See General Rule 3. Inappropriate NAVAIDs for RNAV1	

Rcmd. Path Terminator	Fix ID (Waypoint Name)	Fly Over	Distance (NM)	MAG Track (TRUE Track)	Turn Direction	Altitude (ft.)	Speed Limit (kt)	Vertical Angle	Navigation Performance
IF	WESTN	-	-	-	-	-	-	-	RNAV1
TF	TT222	-	21.4	014° (007.4°)	-	-FL140	-	-	RNAV1
TF	SOGAR	-	13.3	014° (007.4°)	-	-	-	-	RNAV1
TF	MESSE	-	6.0	333° (326.0°)	-	+4000	-	-	RNAV1
TF	ASAHI	-	2.0	297° (289.7°)	-	+3000	-	-	RNAV1

ASAHI SOUTH NR2 RNAV ARRIVAL

From OTAKI, to TT221 at or below FL140, to SOGAR, to MESSE at or above 4,000ft, to ASAHI at or above 3,000ft.

FIX	DESIGNATION	COORDINATES
	OTAKI	350140.8N 1402027.3E
	TT221	352153.2N 1401010.9E
	SOGAR	353144.8N 1400507.5E
	MESSE	353644.7N 1400059.3E
ASAHI	353724.7N 1395842.3E	
Critical DME	-	
DME GAP	-	
Inappropriate Navaids	See General Rule 3. Inappropriate NAVAIDs for RNAV1	

Rcmd. Path Terminator	Fix ID (Waypoint Name)	Fly Over	Distance (NM)	MAG Track (TRUE Track)	Turn Direction	Altitude (ft.)	Speed Limit (kt)	Vertical Angle	Navigation Performance
IF	OTAKI	-	-	-	-	-	-	-	RNAV1
TF	TT221	-	21.9	344° (337.4°)	-	-FL140	-	-	RNAV1
TF	SOGAR	-	10.7	344° (337.3°)	-	-	-	-	RNAV1
TF	MESSE	-	6.0	333° (326.0°)	-	+4000	-	-	RNAV1
TF	ASAHI	-	2.0	297° (289.7°)	-	+3000	-	-	RNAV1