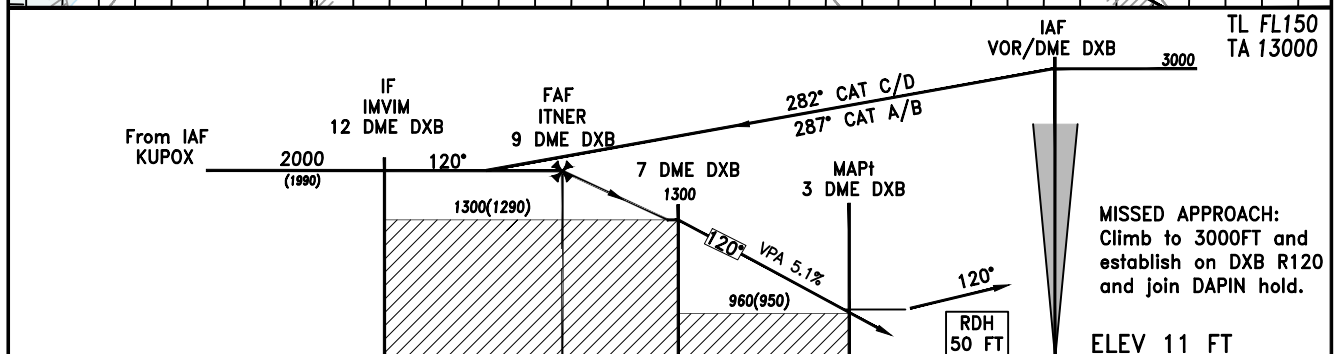
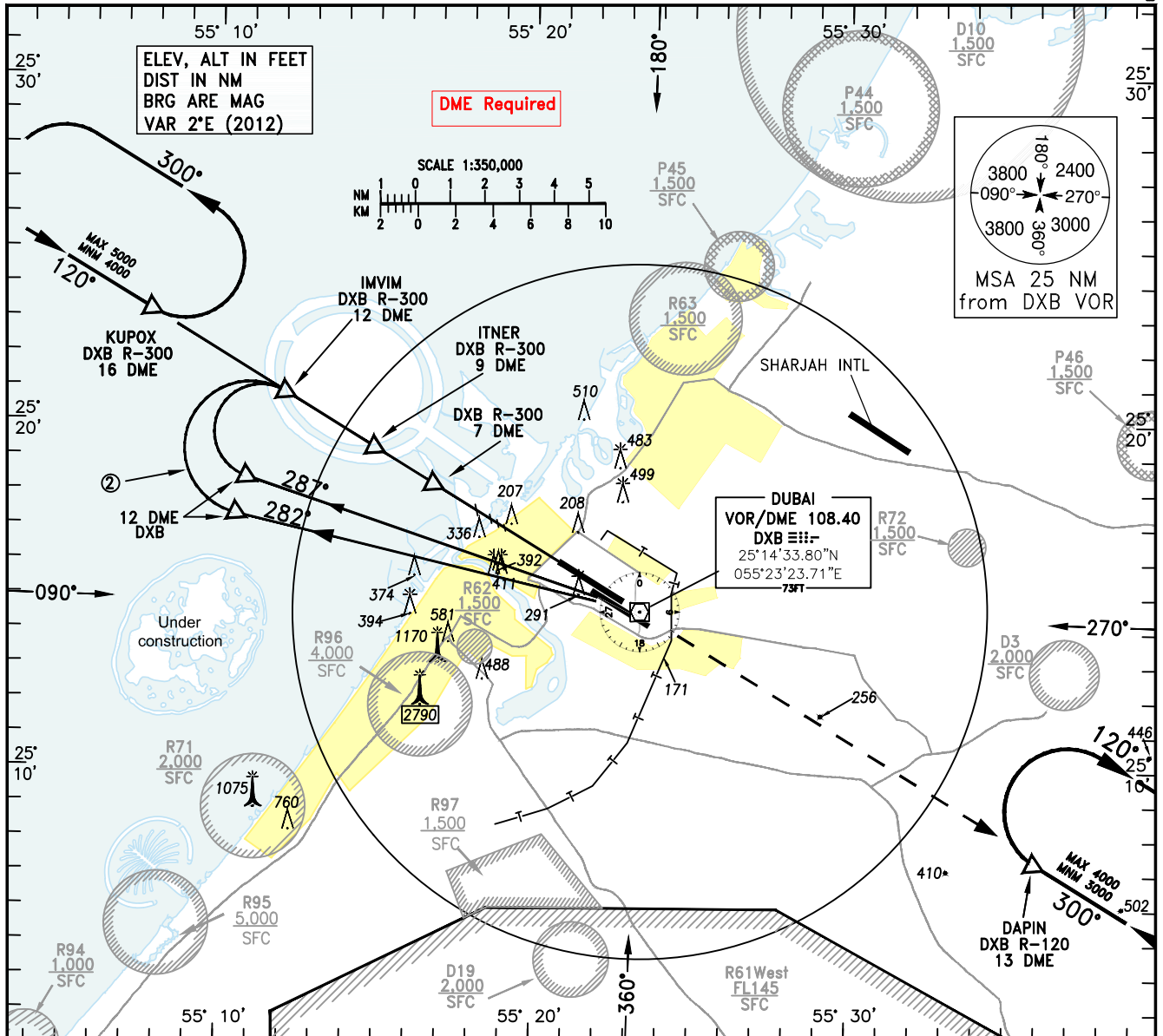


INSTRUMENT  
APPROACH  
CHART-ICAO

AD ELEV 62 FT  
HEIGHTS RELATED TO  
THR RWY 12L ELEV 11FT

ATIS 131.70  
APPROACH 124.90  
DIRECTOR 127.90  
TOWER 118.75/119.55  
GROUND 118.35

DUBAI / Intl.  
VOR RWY 12L  
CAT A - D<sub>L</sub>



NM FROM THR 12L 14 13 12 11 10 9 8 7 6 5 4 3 2 1 0

| OCA/H                | A         | B         | C         | D         | D <sub>L</sub> |
|----------------------|-----------|-----------|-----------|-----------|----------------|
| Straight-in Approach | 960 (950) | 960 (950) | 960 (950) | 960 (950) | 960 (950)      |
| Circling 1           | N/A       |           |           |           |                |

CHANGES: Amended THR ELEV.

| ① Tabulated data for average descent gradient | DME from DXB    | NM     | 3   | 4   | 5   | 6    | 7    | 8    |
|---|-----------------|--------|-----|-----|-----|------|------|------|
| ② MAX speed during base turn 220 KIAS         | Altitude        | FT     | 140 | 450 | 760 | 1070 | 1380 | 1690 |
|   | Ground Speed    | KTS    | 60  | 80  | 100 | 120  | 140  | 160  |
|   | Rate of Descent | FT/MIN | 309 | 412 | 515 | 618  | 721  | 824  |