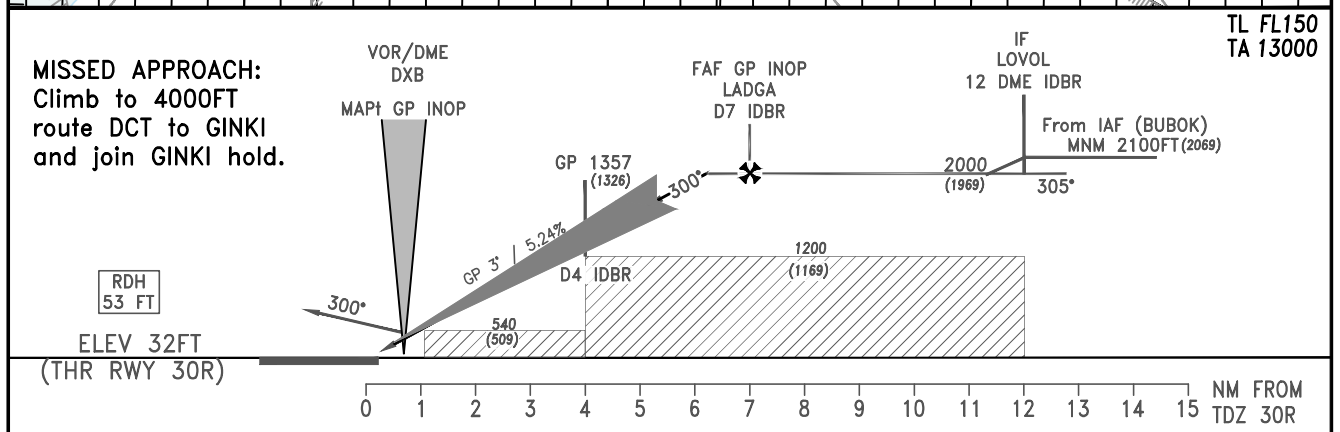
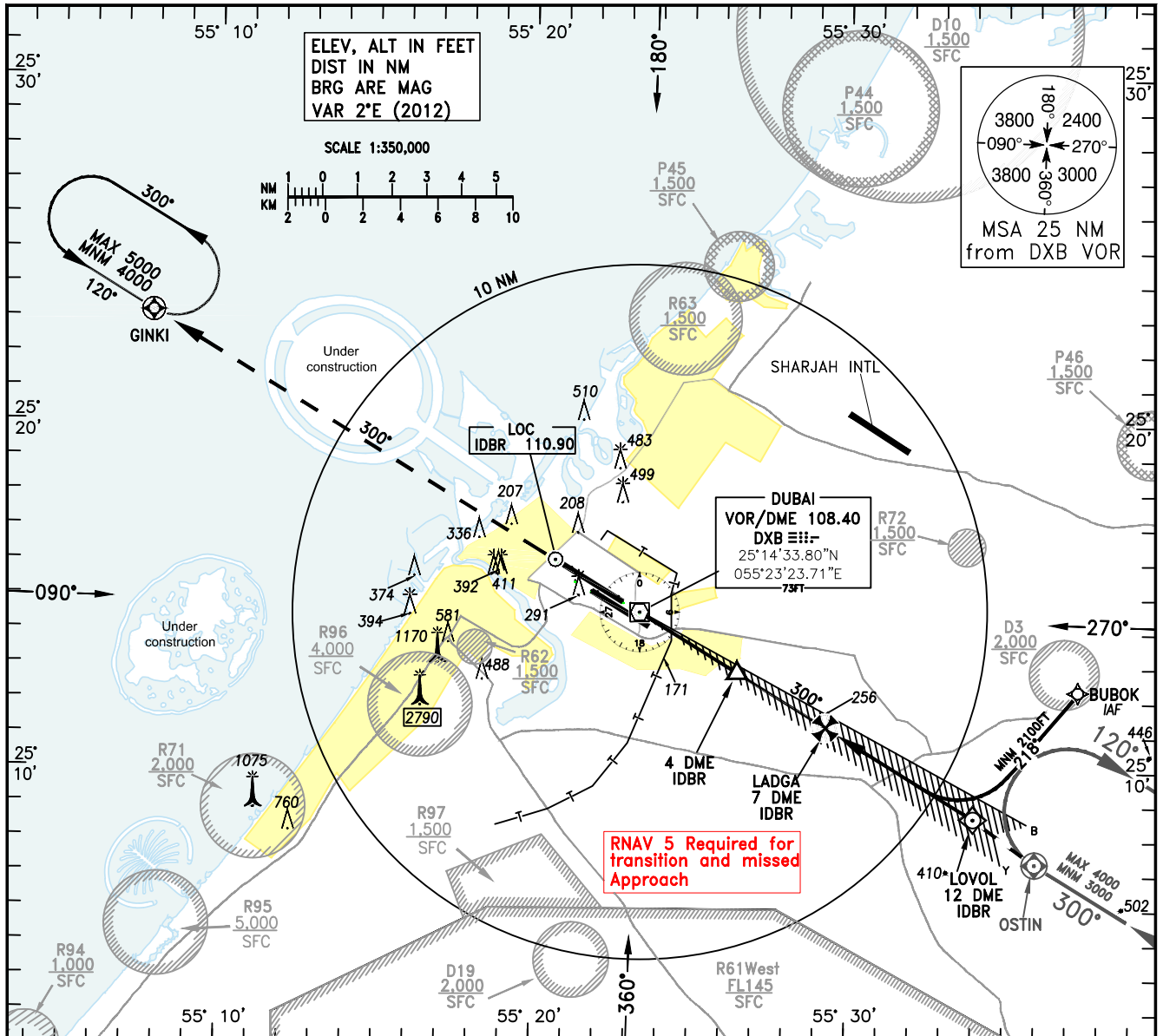


**INSTRUMENT
APPROACH
CHART-ICAO**

AD ELEV 62 FT
**HEIGHTS RELATED TO
THR RWY 30R ELEV 32FT**

ATIS 131.70
APPROACH 124.90
DIRECTOR 127.90
TOWER 118.75/119.55
GROUND 118.35

**DUBAI / Intl.
ILS RWY 30R
CAT A - D_L**



| OCA/H | | A | B | C | D | D _L | | | | | | | | |
|--|--------------|-----------|-----------|-----------|-----------|----------------|----------------------|--------|-----|-----|-----|------|------|------|
| Straight-in Approach | ILS CAT I ① | 197 (166) | 209 (178) | 223 (192) | 238 (207) | 238 (207) | | | | | | | | |
| | ILS CAT II ② | 84 (53) | 93 (62) | 105 (74) | 118 (87) | 118 (87) | | | | | | | | |
| | GP INOP | 580 (549) | | | | | | | | | | | | |
| Circling | | N/A | | | | | | | | | | | | |
| ILS CAT IIIB available. MNM RVR 50M | | | | | | | Distance from IDBR ③ | NM | 1 | 2 | 3 | 4 | 5 | 6 |
| ① Minimum DH CAT A, B, C, D - 200FT | | | | | | | Altitude | FT | 310 | 620 | 930 | 1240 | 1550 | 1860 |
| ② Minimum DH CAT A, B, C, D - 100FT | | | | | | | Ground Speed | KTS | 60 | 80 | 100 | 120 | 140 | 160 |
| ③ Descent data for GP INOP, average gradient on final 4.6% | | | | | | | Rate of Descent | FT/MIN | 280 | 370 | 460 | 560 | 650 | 740 |

CHANGES: Amended THR ELEV.