

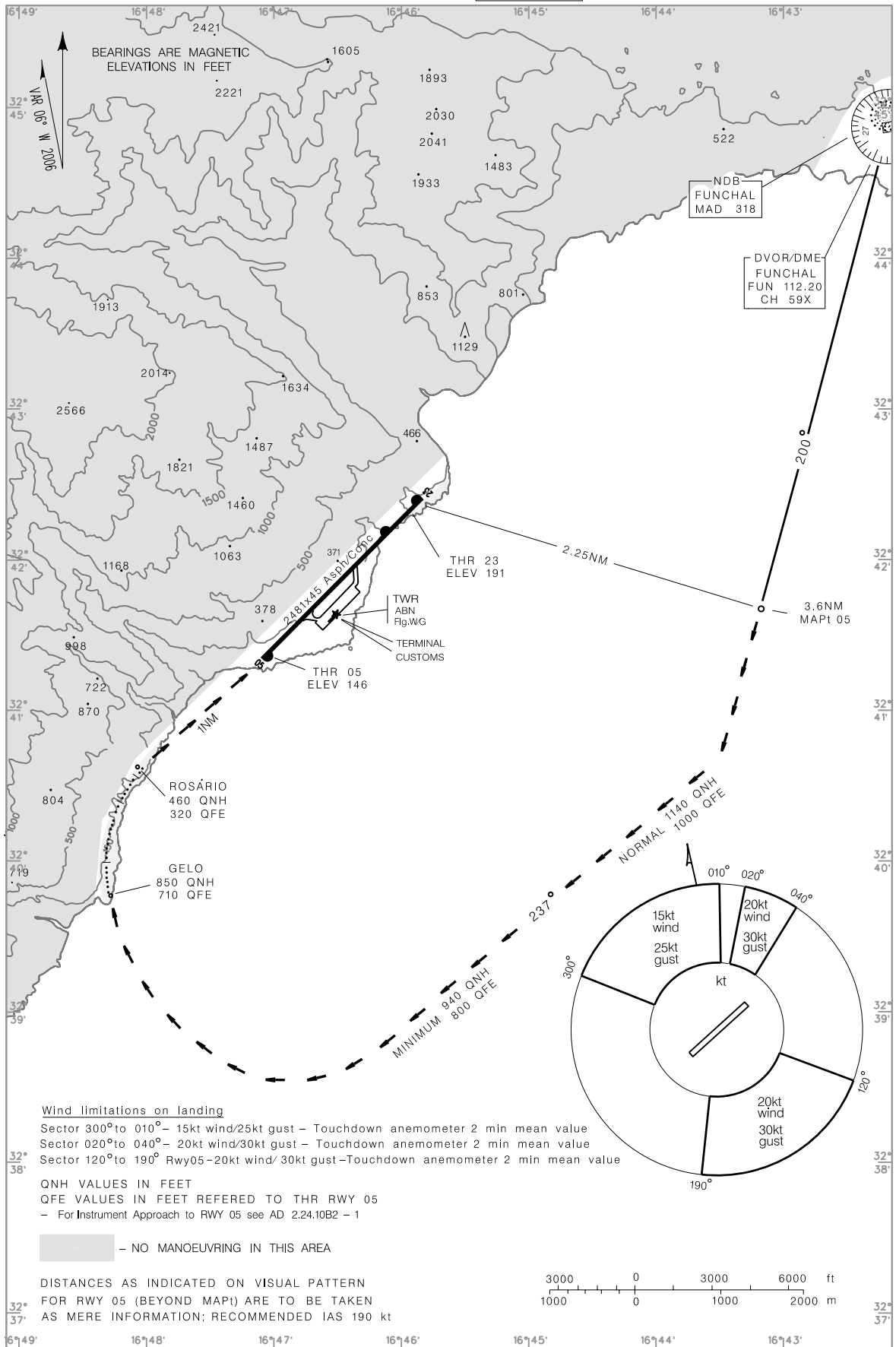
VISUAL APPROACH AND LANDING CHART

AD ELEV 191ft

ATIS 124.400
APP 119.600
TWR 118.350

NDB RWY 05

MADEIRA
LPMA



Wind limitations on landing

Sector 300° to 010° - 15kt wind/25kt gust - Touchdown anemometer 2 min mean value
Sector 020° to 040° - 20kt wind/30kt gust - Touchdown anemometer 2 min mean value
Sector 120° to 190° Rwy05 - 20kt wind/30kt gust - Touchdown anemometer 2 min mean value

QNH VALUES IN FEET

QFE VALUES IN FEET REFERED TO THR RWY 05
- For Instrument Approach to RWY 05 see AD 2.24.10B2 - 1

NO MANOEUVRING IN THIS AREA

DISTANCES AS INDICATED ON VISUAL PATTERN FOR RWY 05 (BEYOND MAPt) ARE TO BE TAKEN AS MERE INFORMATION; RECOMMENDED IAS 190 kt

LAT and LONG tick marks corrected