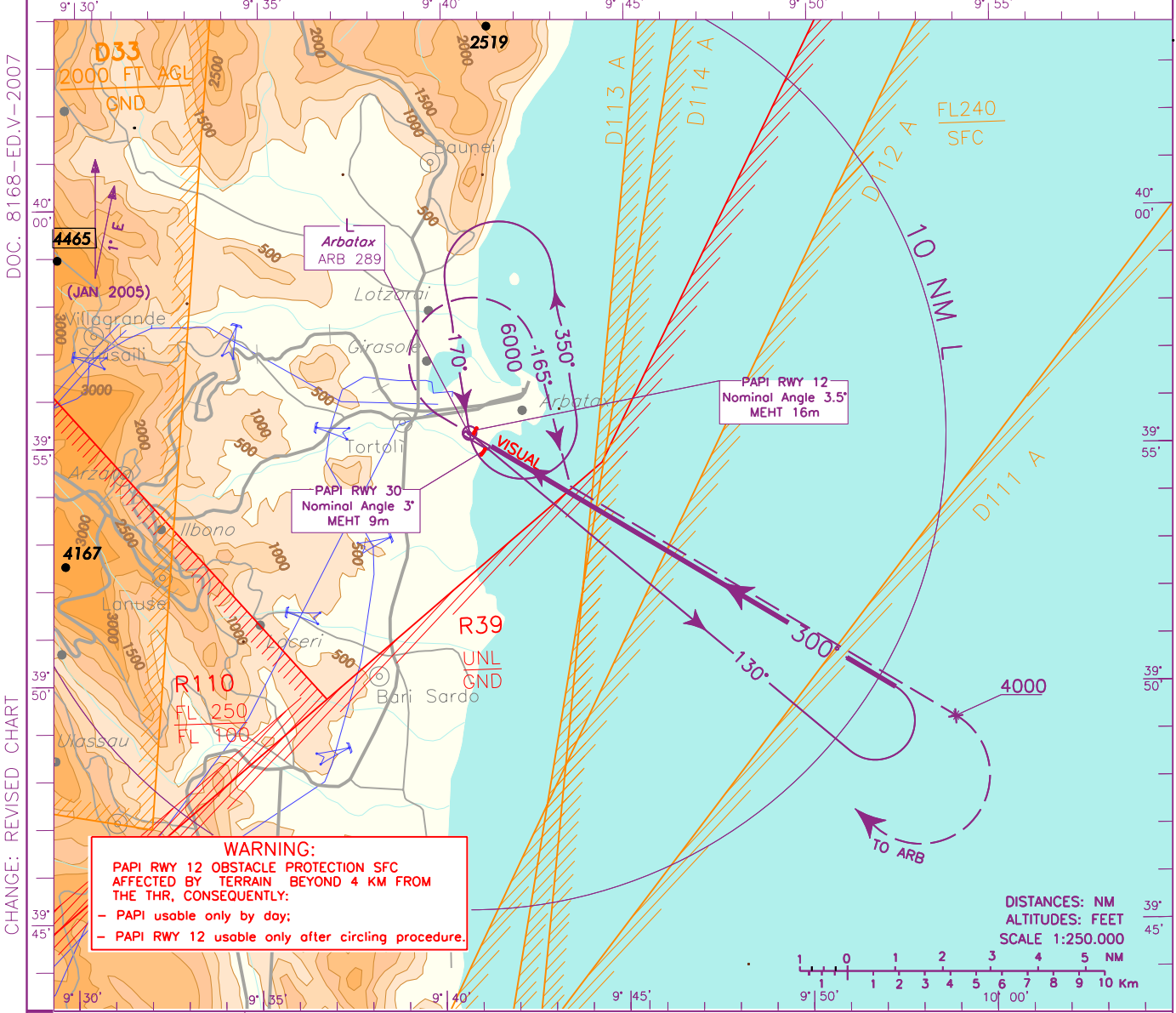
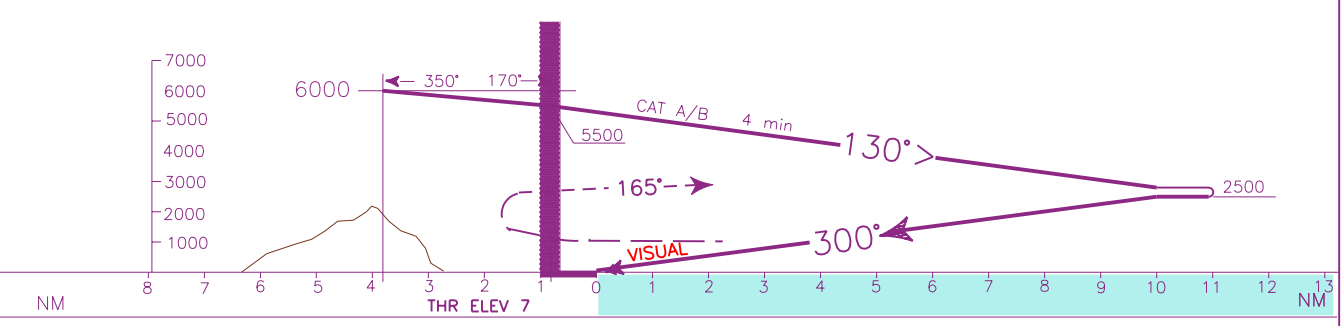


<p>WARNING</p> <p>NON INSTRUMENT A/D VISIBILITY MNM 5000 m</p>	APP <i>Olbia Approach</i> 125.950	AD ELEV	<p>L</p> <p>ET</p> <p>TORTOLI/ARBATAX L RWY 30 ACFT CAT A/B</p>
	AFIS <i>Tortoli Aerodrome Info</i> 119.650	24	



TRANSITION ALT 8000

MISSED APPROACH: Proceed on track 300° to ARB/L climbing to 6000 ft. Over ARB/L turn right on heading 165° to join and follow QDR 120°. Passing 4000 ft turn right to ARB L. Reach ARB/L at 6000 ft.



OCA (OCH)	A	B	C	D
STRAIGHT IN APPROACH Missed Approach 2.5%	1300 (1293)		N.A.	N.A.
Missed Approach 5%	1000 (993)		N.A.	N.A.
CIRCLING (*)	1300 (1276)		N.A.	N.A.

(*) **REMARK:**
CIRCLING ALLOWED ONLY NORTH EAST OF RUNWAY

NOT ALLOWED

FT PER MIN	GS	DIST	ALT (HGT)

