

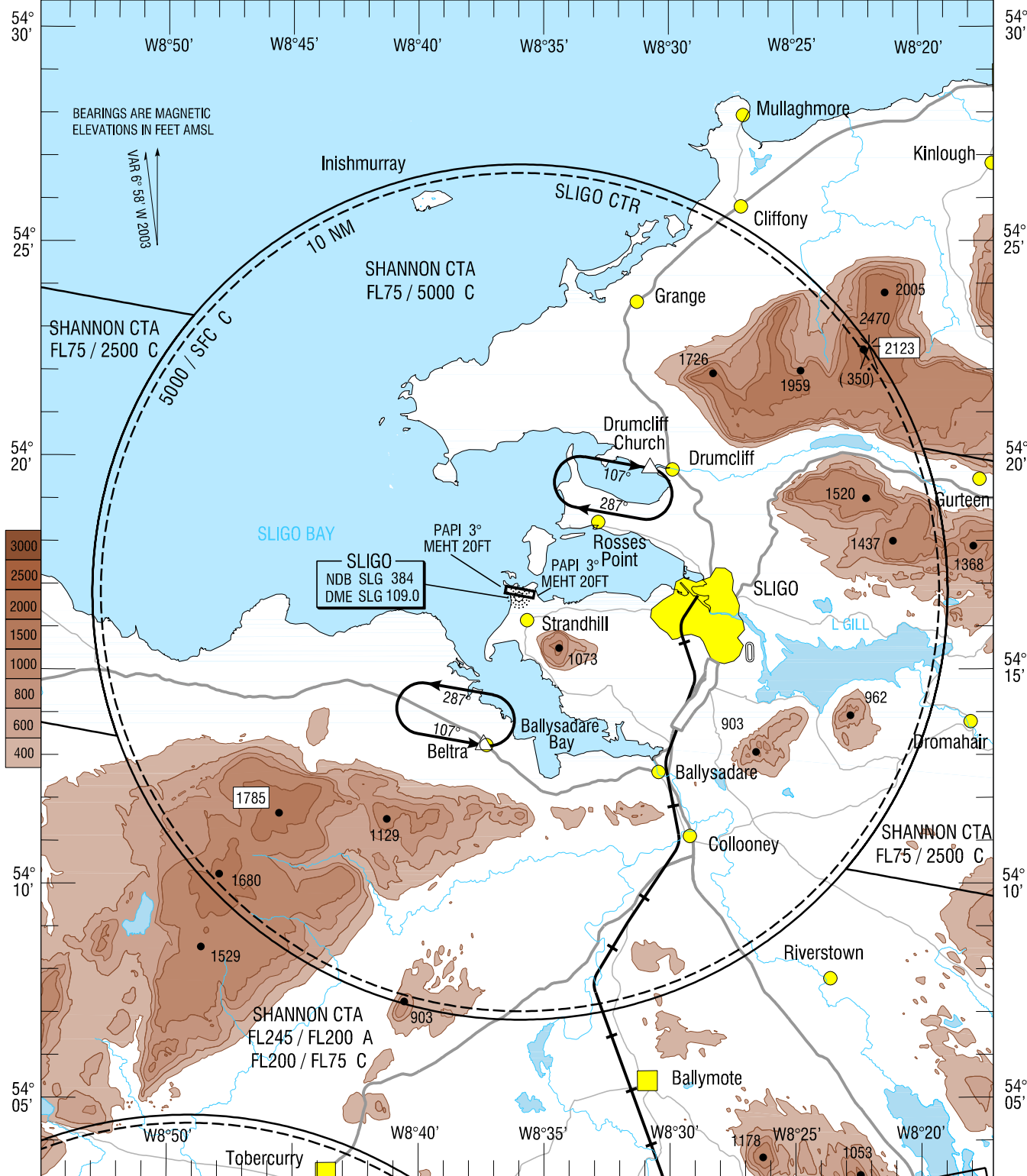
VISUAL APPROACH CHART - ICAO

AERODROME ELEV 11 ft

TWR 122.1 Emerg 121.5

CONSULT NOTAM FOR LATEST INFORMATION

SLIGO / SLIGO

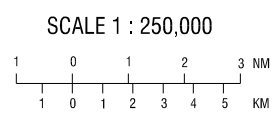


MNM ALT 1500ft 1 MIN

Visual Holding Pattern (Based on TAS 120 kts)

Drumcliff Church 54°19'41.79"N 008°30'43.78" W  
Beltra 54°13'14.07"N 008°37'22.39" W

Note 1: In the event of a radio failure :  
- Aircraft from the North, route via Cliffony not above 1500ft to the Drumcliff Church Hold  
- Aircraft from the South, route via Riverstown not above 1500ft to the Beltra Hold to receive landing instructions from the Control Tower using the ALDIS lamp.



Mapping based on Ordnance Survey Ireland by Permission of the Government © Government of Ireland Permit Number 7109

CHANGE : New Chart