

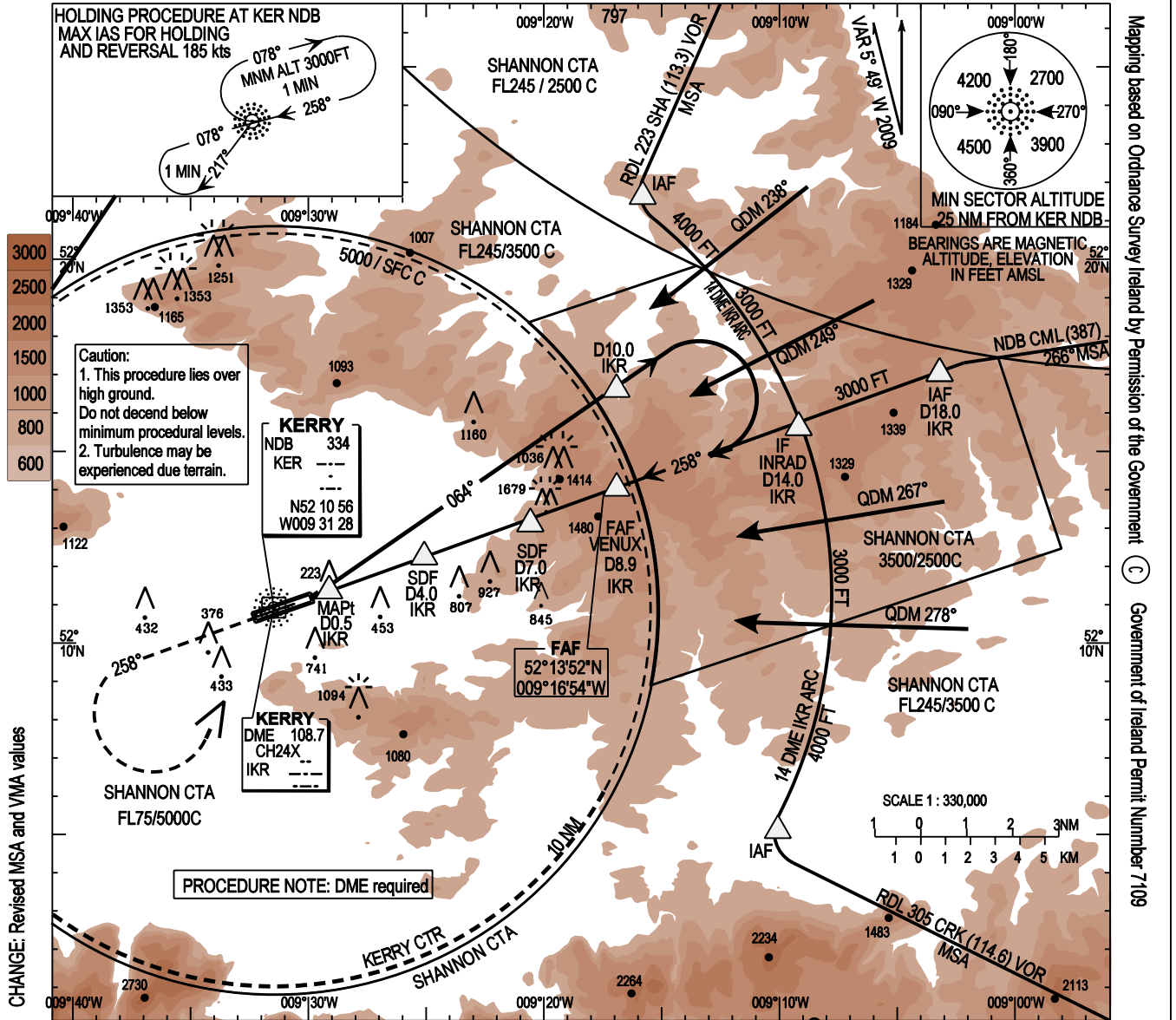
**INSTRUMENT APPROACH CHART - ICAO**

**AERODROME ELEV 112ft**  
 HEIGHTS RELATED TO THR RWY 26 - ELEV 112ft

Kerry TWR 123.325  
 Kerry GND 121.6  
 Shannon Control 124.7  
 ATIS 118.025

**CONSULT NOTAM FOR LATEST INFORMATION**

**KERRY / KERRY NDB RWY 26**  
 (ACFT CAT A, B, C)



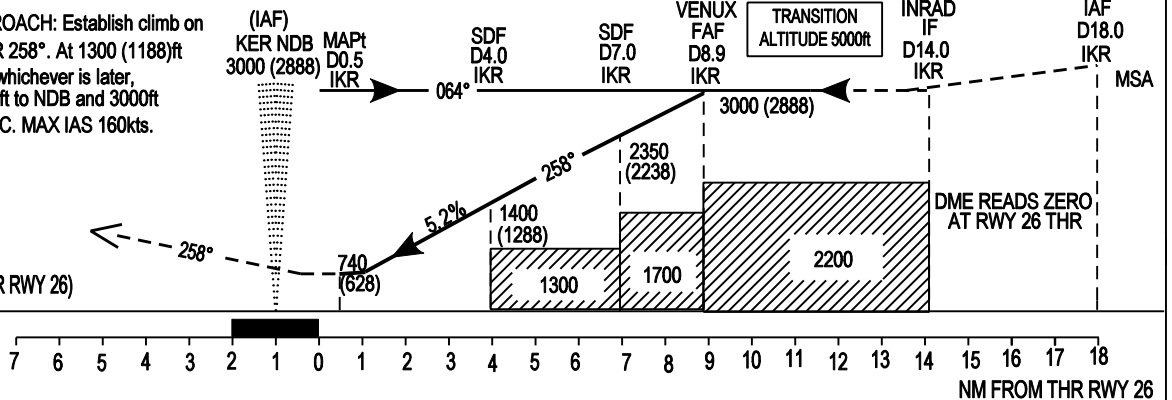
CHANGE: Revised MSA and VMA values

**Caution:**  
 1. This procedure lies over high ground.  
 Do not descend below minimum procedural levels.  
 2. Turbulence may be experienced due terrain.

**PROCEDURE NOTE: DME required**

**MISSED APPROACH:** Establish climb on NDB KER QDR 258°. At 1300 (1188)ft or 3 DME IKR whichever is later, climbing turn left to NDB and 3000ft and contact ATC. MAX IAS 160kts.

ELEV 112ft (THR RWY 26)



OCA (H)	A	B	C	NOTE: INSTRUMENT APPROACHES ONLY AVAILABLE WHEN AIR TRAFFIC CONTROL ZONE IS ACTIVE UNLESS AUTHORIZED BY THE OPERATING STANDARDS DEPARTMENT OF THE IAA.									
Straight-in Approach	← 740 (628) →			Recommended Profile in Final Approach									
	DME	8.0	7.0	6.0	5.0	4.0	3.0	2.0					
Visual Manoeuvring (These heights are AAL)	Total Area	1040 (928)	1190 (1078)	1500 (1388)	ALT (HT)	2710 (2598)	2400 (2288)	2000 (1968)	1760 (1648)	1440 (1328)	1120 (1008)	800 (688)	
	North of RWY only	650 (538)	650 (538)	950 (838)	Ground Speed	Kts		70	90	100	110	120	140
					Decent Rate Gradient - 5.2%	FT/ MIN		370	480	530	580	640	740

Mapping based on Ordnance Survey Ireland by Permission of the Government (C) Government of Ireland Permit Number 7109