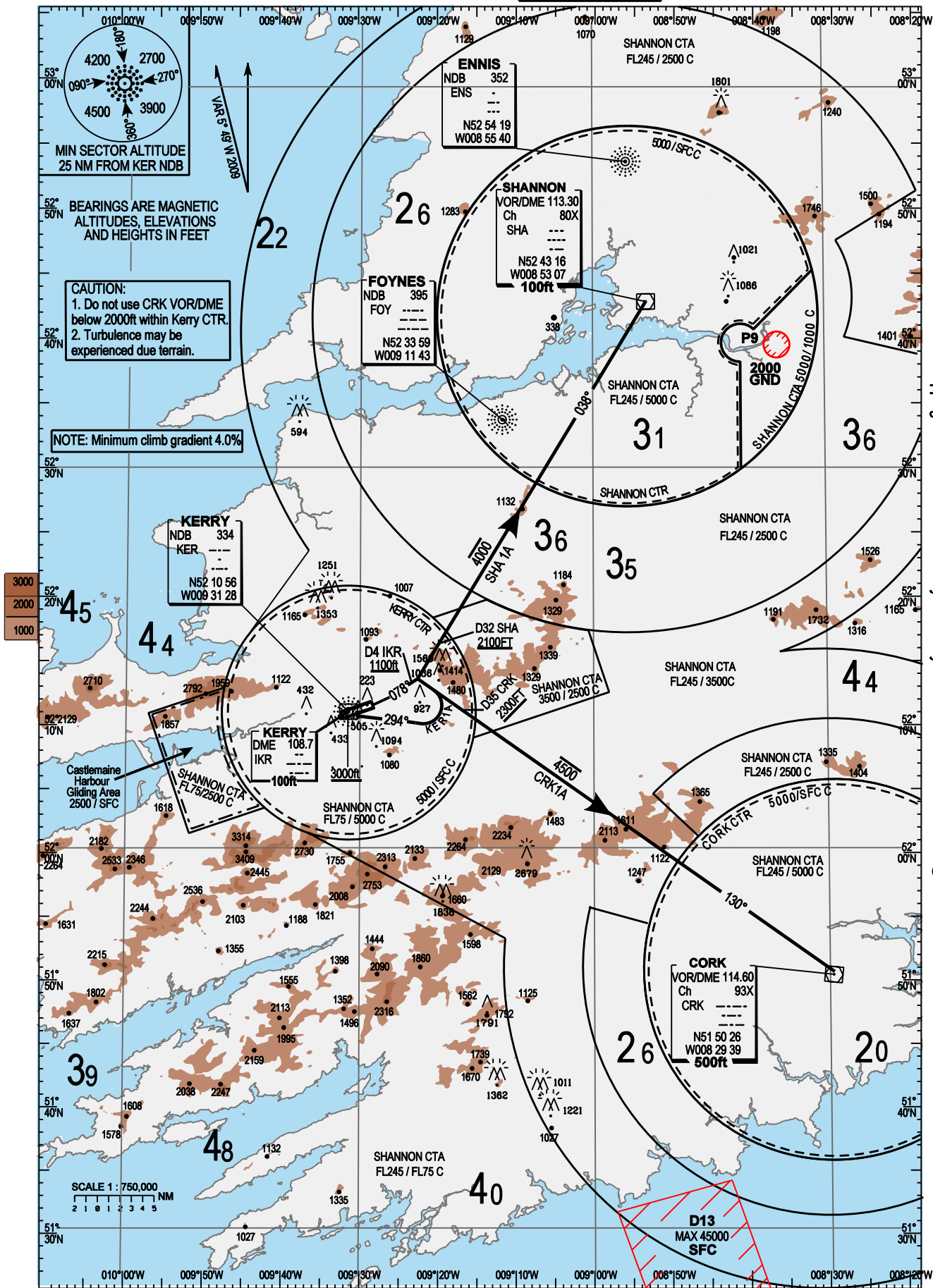


**AIP IRELAND
STANDARD DEPARTURE CHART
INSTRUMENT (SID) - ICAO**

**TRANS ALT 5000FT
TRANS LEVEL by ATC**

TWR 123.325
GND 121.6
SHANNON ACC 124.7

**EIKY AD 2.24-5
KERRY RWY 08
CAT A,B
SHA 1A, CRK 1A, KER 1A**



CAUTION:
1. Do not use CRK VOR/DME below 2000ft within Kerry CTR.
2. Turbulence may be experienced due terrain.

NOTE: Minimum climb gradient 4.0%

Mapping based on Ordnance Survey Ireland by Permission of the Government © Government of Ireland Permit Number 7109

CHANGE: Revised MSA values

KERRY STANDARD INSTRUMENT DEPARTURES RWY 08

AIRCRAFT CATEGORIES A AND B

Where climb instructions to levels higher than the maximum SID altitude are issued by ATC, Pilots, unless specifically instructed to the contrary, must comply with all tracks, minimum level and all indicated airspeed restrictions specified in the SID.

ATS Route	SID Designator	Routeing	Altitude
Shannon	SHA 1A	Climb on KER NDB QDR 078 to 4D IKR. Turn left, intercept RDL 218 inbound to SHA VOR.	Climb 4000ft Maintain minimum 4.0% climb to MSA. Cross 4D IKR 1100ft or above. Cross 32D SHA 2100ft or above.
Cork	CRK 1A	Climb on KER NDB QDR 078 to 4D IKR. Turn right, intercept RDL 310 inbound to CRK VOR.	Climb 4500ft Maintain minimum 4.0% climb to MSA. Cross 4D IKR 1100ft or above. Cross 35D CRK 2300ft or above
All routes	KER 1A	Climb on KER NDB QDR 078 to 4D IKR. Turn right onto track 294 to KER NDB.	Climb 4000ft Maintain minimum 4.0% climb to MSA. Cross 4D IKR 1100ft or above. Cross KER NDB 3000ft or above. From KER NDB, climb if necessary, in KER NDB holding pattern (See chart EIKY AD 2.24-10) to MSA before setting course