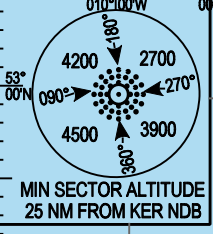
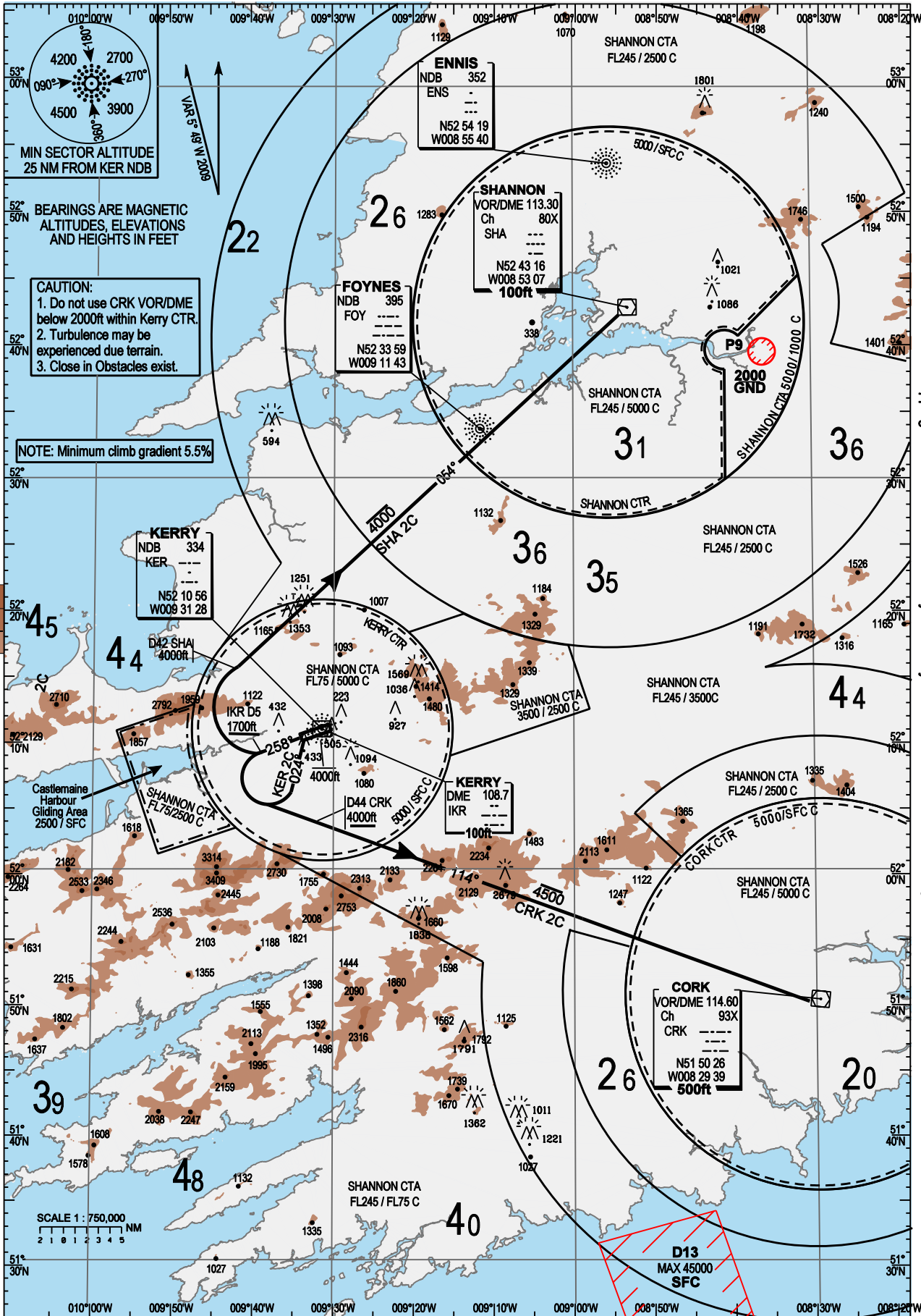


**AIP IRELAND  
STANDARD DEPARTURE CHART  
INSTRUMENT (SID) - ICAO**

**TRANS ALT 5000FT  
TRANS LEVEL by ATC**

TWR 123.325  
GND 121.6  
SHANNON ACC 124.7

**EIKY AD 2.24-4  
KERRY RWY 26  
CAT C  
SHA 2C, CRK 2C, KER 2C**



**CAUTION:**  
1. Do not use CRK VOR/DME  
below 2000ft within Kerry CTR.  
2. Turbulence may be  
experienced due terrain.  
3. Close in Obstacles exist.

**NOTE:** Minimum climb gradient 5.5%

Mapping based on Ordnance Survey Ireland by Permission of the Government © Government of Ireland Permit Number 7109

CHANGE: Revised MSA values

**KERRY STANDARD INSTRUMENT DEPARTURES RWY 26**

**AIRCRAFT CATEGORIES C**

Where climb instructions to levels higher than the maximum SID altitude are issued by ATC, Pilots, unless specifically instructed to the contrary, must comply with all tracks, minimum level and all indicated airspeed restrictions specified in the SID.

| <b>ATS Route</b> | <b>SID Designator</b> | <b>Routeing</b>                                                                       | <b>Altitude</b>                                                                                                                                                                                                               |
|------------------|-----------------------|---------------------------------------------------------------------------------------|-------------------------------------------------------------------------------------------------------------------------------------------------------------------------------------------------------------------------------|
| Shannon          | SHA 2C                | Climb on KER NDB QDR 258 to 5D IKR. Turn right, intercept RDL 234 inbound to SHA VOR. | Climb 4000ft<br>Maintain minimum 5.5% climb to MSA. Cross 5D IKR 1700ft or above. Cross 42D SHA 4000ft.                                                                                                                       |
| Cork             | CRK 2C                | Climb on KER NDB QDR 258 to 5D IKR. Turn left, intercept RDL 298 inbound to CRK VOR.  | Climb 4500ft<br>Maintain minimum 5.5% climb to MSA. Cross 5D IKR 1700ft or above. Cross 44D CRK 4000ft or above.                                                                                                              |
| All routes       | KER 2C                | Climb on KER NDB QDR 258 to 5D IKR. Turn left onto track 044 to KER NDB.              | Climb 4000ft<br>Maintain minimum 5.5% climb to MSA. Cross 5D IKR 1700ft or above. Cross KER NDB 4000ft. From KER NDB, climb if necessary, in KER NDB holding pattern (See chart EIKY AD 2.24-7) to MSA before setting course. |