

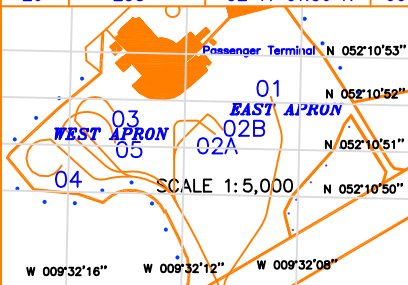
AERODROME CHART - ICAO 52 10 51.16 N AERODROME ELEV 112FT
 009 31 25.62 W APRON ELEV 78FT

TWR 123.325
 GND 121.6
 ATIS 118.025

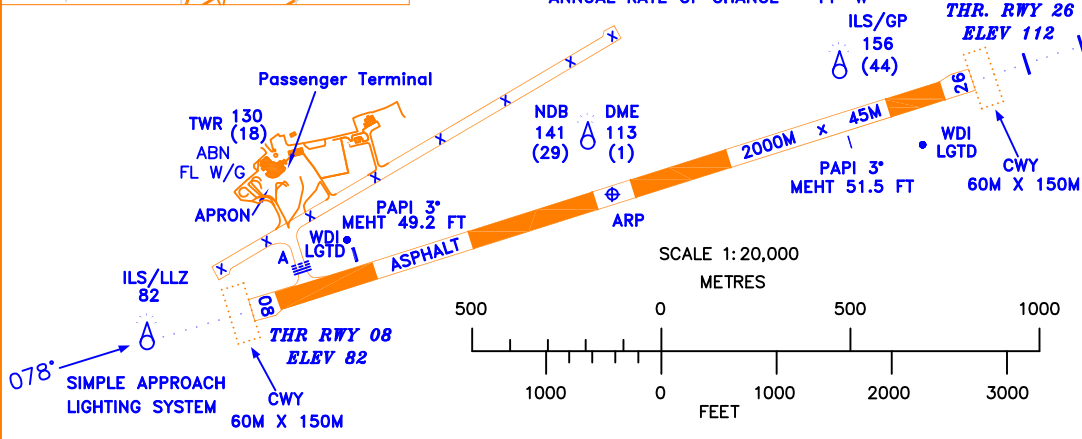
CONSULT NOTAM
 FOR LATEST
 INFORMATION

KERRY AIRPORT/ IRELAND

RWY	DIRECTION	THR		BEARING STRENGTH	LEGEND	
08	078°	52 10 40.75 N	009 32 15.46 W	PCN 44/F/C/W/T	AIRCRAFT STAND	1
26	258°	52 11 01.56 N	009 30 35.78 W		RUNWAY HOLDING POSITION MARKING	≡≡≡≡
					DISUSED PAVEMENT	X X X



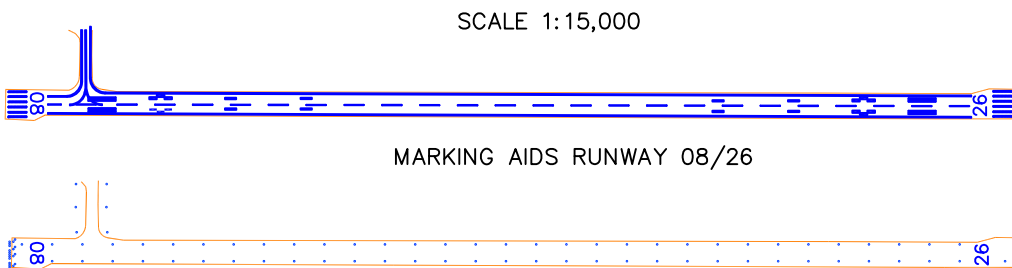
BEARINGS ARE MAGNETIC.
 LINEAR DIMENSIONS IN METRES.
 ELEVATIONS IN FEET AMSL
 HEIGHTS IN FEET ABOVE AERODROME ELEVATION SHOWN IN BRACKETS.



PRECISION APPROACH
 CAT I LIGHTING SYSTEM

CHANGES: NOTE ON RUNWAY 07/25 REMOVED, ATIS, MAGNETIC VARIATION, NEW STANDS AND STAND CONDITIONS ON THE APRON.

AMENDMENT RECORD		
NO.	DATE	ENTERED BY



LIGHTING AIDS RUNWAY 08/26

Stand	Latitude	Longitude	Max Wingspan	Max Length	Conditions
1	52 10 52.14 N	009 32 09.00 W	38.06	47.33	Self Manoeuvring.
2A	52 10 51.32 N	009 32 10.91 W	28.88	36.40	Self Manoeuvring Stand 2B Vacant
2B	52 10 51.41 N	009 32 10.65 W	35.79	44.50	Self Manoeuvring Stand 2A Vacant
3	52 10 51.76 N	009 32 14.46 W	29.00	25.25	Self Manoeuvring Stand 5 Vacant
4	52 10 50.58 N	009 32 16.22 W	29.00	25.25	Self Manoeuvring Stand 5 Vacant
5	52 10 51.09 N	009 32 14.38 W	34.15	44.50	Self Manoeuvring Stands 3 and 4 Vacant

- NOTE 1: TAXIWAY A, EAST APRON : PCN 44/F/C/W/T.
- NOTE 2: WEST APRON : PCN 44/F/C/W/U.
- NOTE 3: TAXIWAY A : 23M WIDE.
- NOTE 4: APRON SURFACE : CONCRETE AND ASPHALT.
- NOTE 5: FORWARD SCATTER VISIBILITY METER AVAILABLE ON APPROACH 26.