

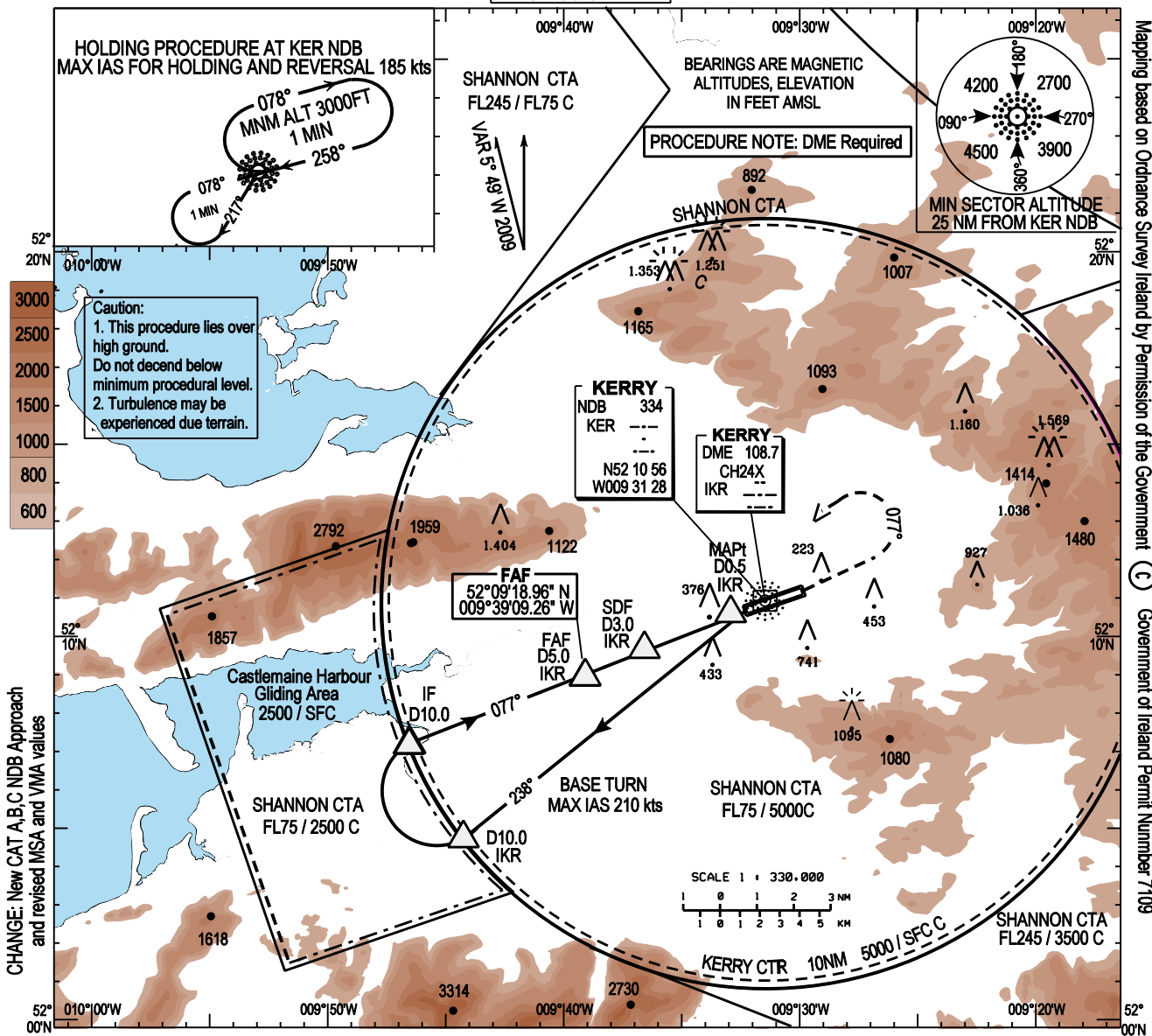
INSTRUMENT APPROACH CHART - ICAO

AERODROME ELEV 112ft
HEIGHTS RELATED TO THR RWY 08 - ELEV 82ft

Kerry TWR 123.325
Kerry GND 121.6
Shannon Control 124.7
ATIS 118.025

CONSULT NOTAM FOR LATEST INFORMATION

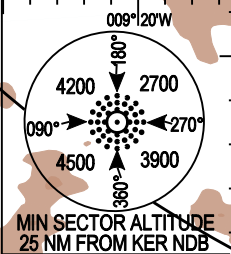
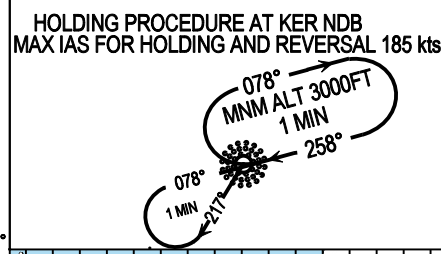
KERRY / KERRY NDB RWY 08 (ACFT CAT A,B,C)



3000
2500
2000
1500
1000
800
600

CHANGE: New CAT A,B,C NDB Approach and revised MSA and YMA values

Caution:
1. This procedure lies over high ground.
Do not descend below minimum procedural level.
2. Turbulence may be experienced due terrain.

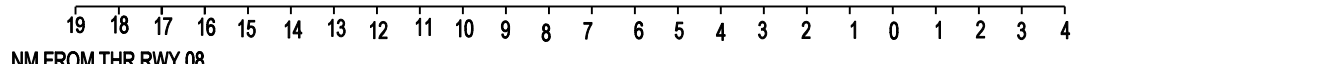


TRANSITION ALTITUDE 5000ft

MISSED APPROACH:
Climb straight ahead,
At 3.0 DME IKR turn left to NDB KER and hold.
Climb to 3000 FT.
Contact ATC.

DME READS ZERO AT RWY 08 THR

ELEV 82ft (THR RWY 08)



OCA (H)		A	B	C	NOTE: INSTRUMENT APPROACHES ONLY AVAILABLE WHEN AIR TRAFFIC CONTROL ZONE IS ACTIVE UNLESS AUTHORIZED BY THE OPERATING STANDARDS DEPARTMENT OF THE IAA.							
Straight-in Approach		← 650 (568) →			Recommended Profile in Final Approach							
					DME	7.0	6.0	5.0	4.0	3.0		
					ALT (HT)	2424(2342)	2078(1996)	1732(1650)	1385(1303)	1039(957)		
Visual Manoeuvring (These heights are AAL)	Total Area	1040 (928)	1190 (1078)	1500 (1388)	Ground Speed	Kts	70	90	100	110	120	140
	North of RWY only	650 (538)	650 (538)	950 (838)	Descent Rate Gradient 5.7% (3.26°)	FT/ MIN	405	520	580	635	695	810