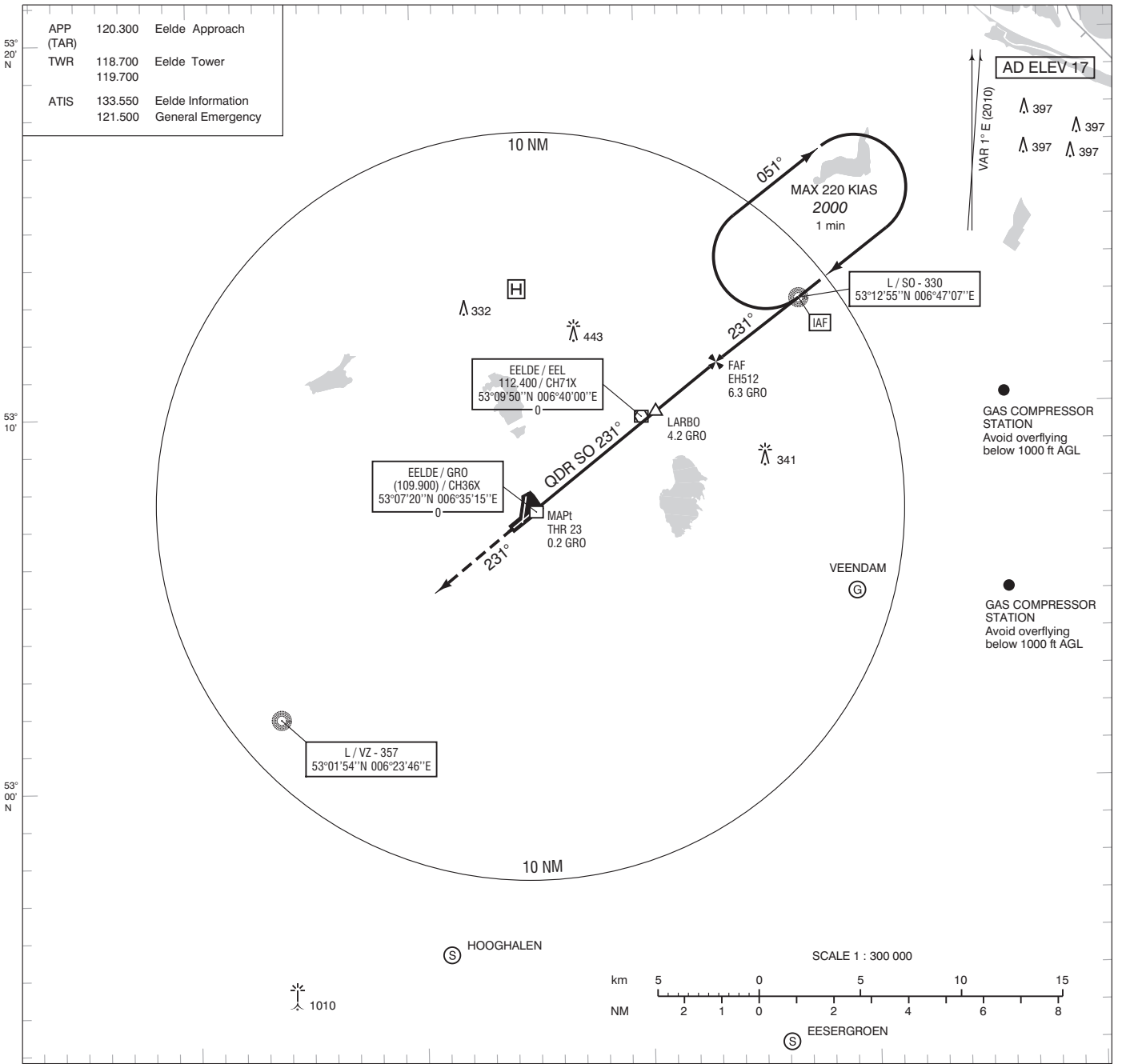


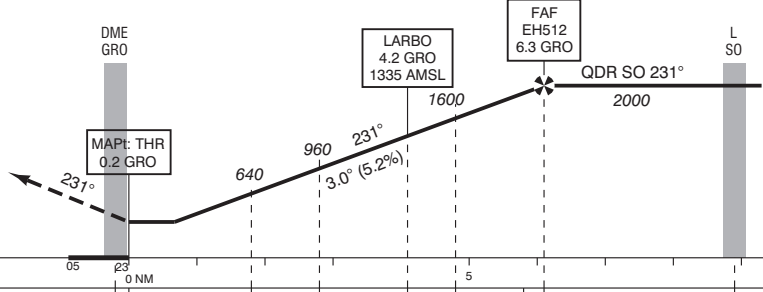
APP (TAR)	120.300	Eelde Approach
TWR	118.700	Eelde Tower
	119.700	
ATIS	133.550	Eelde Information
	121.500	General Emergency



- Missed Approach:
  - Track 231° MAG and climb to 2000 ft AMSL. Inform ATC.
- Missed Approach in case of communication failure:
  - Track 231° MAG and climb to 3000 ft AMSL;
  - When passing 2000 ft AMSL start a right turn to 320° MAG;
  - When reaching 3000 ft AMSL proceed to SO;
  - After arriving over SO hold or descend to 2000 ft AMSL in an outbound turn, intercept final approach and execute the instrument approach procedure again.

DO NOT DESCEND BELOW THE DESCENT PROFILE

TRANSITION LEVEL BY ATC  
TRANSITION ALTITUDE 3000 ft AMSL



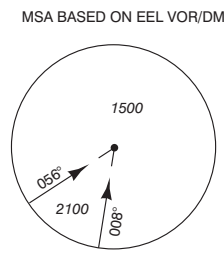
THR ELEV 12

DIST RELATED TO DME GRO

GS IN KT	60	80	100	120	140	160	180
VERTICAL SPEED	320 ft/min	425 ft/min	530 ft/min	635 ft/min	745 ft/min	850 ft/min	955 ft/min

OCA (OCH) ELEV THR 23: 12.3 ft

ACFT CAT	NDB MAPt: THR	CIRCLING*	* Circling approaches shall be executed south-east of the AD, unless otherwise instructed by ATC.	THR 23 53°07'30"N 006°35'25"E EH512 53°11'15"N 006°43'23"E
A	430 (420)	460 (440)		
B		520 (500)		
C		620 (600)		
D		840 (830)		



CEILING AND VISIBILITY MINIMA			
TAKE-OFF	DAY:	NA	NIGHT:
LANDING	DAY:	NA	NIGHT:

BEARINGS ARE MAGNETIC  
DISTANCES IN NM  
ALTITUDES AND ELEVATIONS  
IN FEET

CHANGE: MAG VAR 2010, new WPT symbols and layout, editorial.