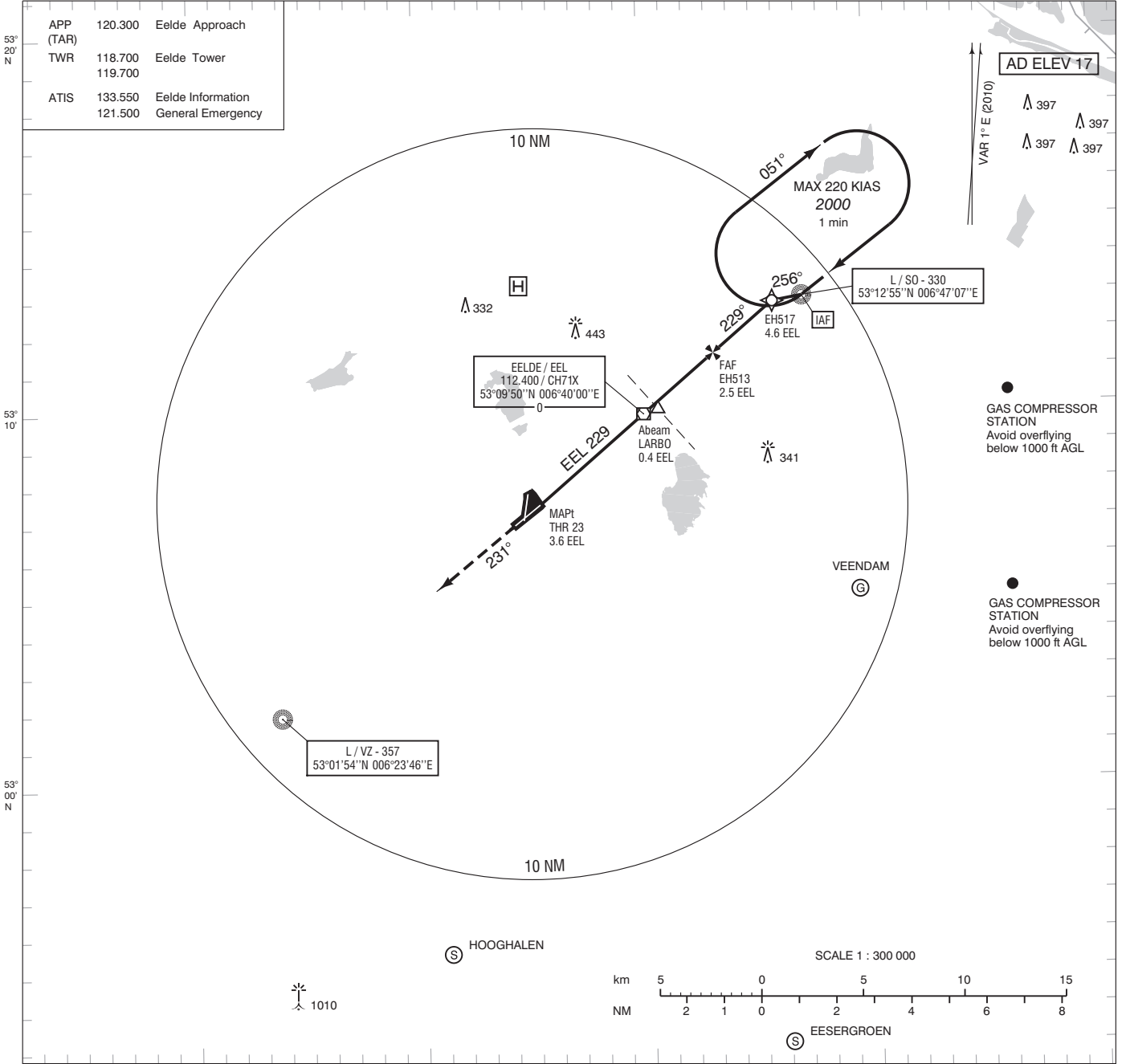


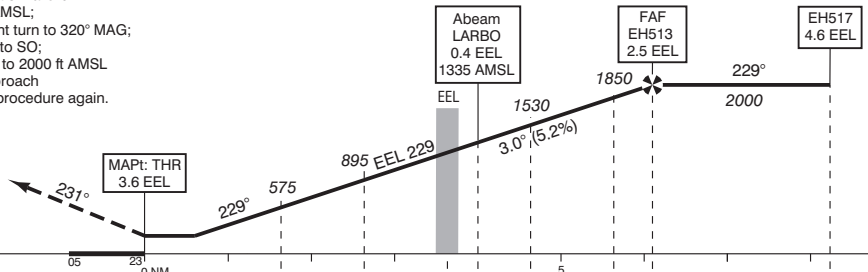
APP (TAR)	120.300	Eelde Approach
TWR	118.700	Eelde Tower
	119.700	
ATIS	133.550	Eelde Information
	121.500	General Emergency



- Missed approach:
 - Track 231° MAG and climb to 2000 ft AMSL. Inform ATC.
- Missed approach in case of communication failure:
 - Track 231° MAG and climb to 3000 ft AMSL;
 - When passing 2000 ft AMSL start a right turn to 320° MAG;
 - When reaching 3000 ft AMSL proceed to SO;
 - After arriving over SO hold or descend to 2000 ft AMSL in an outbound turn, intercept final approach and execute the instrument approach procedure again.

DO NOT DESCEND BELOW THE DESCENT PROFILE

TRANSITION LEVEL BY ATC
TRANSITION ALTITUDE 3000 ft AMSL

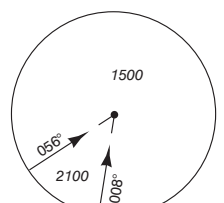


DIST RELATED TO EEL VOR/DME	0.5	1.2	2.5	4.6	10		
GS IN KT	60	80	100	120	140	160	180
VERTICAL SPEED	320 ft/min	425 ft/min	530 ft/min	635 ft/min	745 ft/min	850 ft/min	955 ft/min

OCA (OCH) ELEV THR 23: 12.3 ft			
ACFT CAT	VOR / DME MAPt : THR	CIRCLING*	MSA BASED ON EEL VOR/DME

A	430 (420)	450 (430)	* Circling approaches shall be executed south-east of the AD, unless otherwise instructed by ATC.	THR 23 53°07'30"N 006°35'25"E EH513 53°11'26"N 006°43'08"E EH517 53°12'47"N 006°45'48"E
B		520 (500)		
C		620 (600)		
D		840 (830)		

CEILING AND VISIBILITY MINIMA				BEARINGS ARE MAGNETIC DISTANCES IN NM ALTITUDES AND ELEVATIONS IN FEET	
TAKE-OFF	DAY:	NA	NIGHT:		NA
LANDING	DAY:	NA	NIGHT:		NA



CHANGE: MAG VAR 2010, new WPT symbols and layout, editorial.