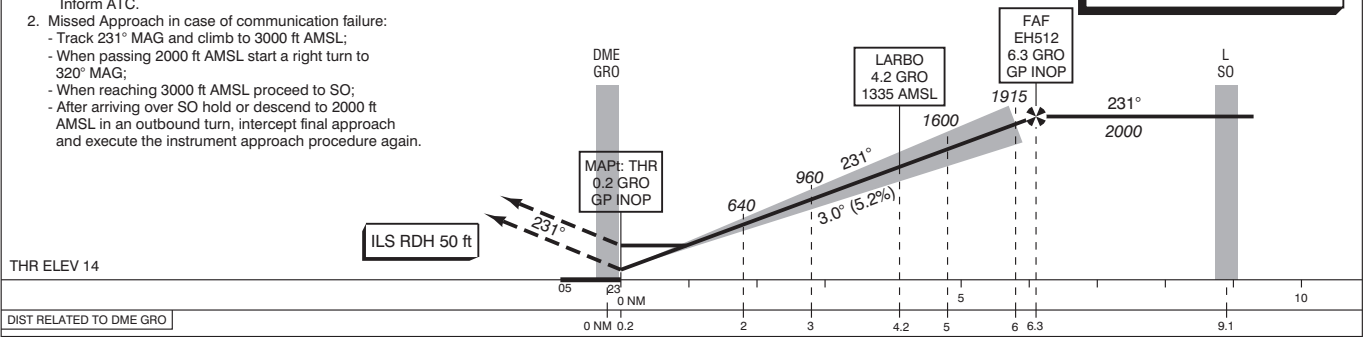


- Missed Approach:
 - Track 231° MAG and climb to 2000 ft AMSL. Inform ATC.
- Missed Approach in case of communication failure:
 - Track 231° MAG and climb to 3000 ft AMSL;
 - When passing 2000 ft AMSL start a right turn to 320° MAG;
 - When reaching 3000 ft AMSL proceed to SO;
 - After arriving over SO hold or descend to 2000 ft AMSL in an outbound turn, intercept final approach and execute the instrument approach procedure again.

DO NOT DESCEND BELOW THE DESCENT PROFILE

TRANSITION LEVEL BY ATC
TRANSITION ALTITUDE 3000 ft AMSL



DIST RELATED TO DME GRO	0 NM	0.2	2	3	4.2	5	6.3	9.1	10
-------------------------	------	-----	---	---	-----	---	-----	-----	----

GS IN KT	60	80	100	120	140	160	180
VERTICAL SPEED	320 ft/min	425 ft/min	530 ft/min	635 ft/min	745 ft/min	850 ft/min	955 ft/min

OCA (OCH) ELEV THR 23: 12.3 ft				* Circling approaches shall be executed south-east of the AD, unless otherwise instructed by ATC.	THR 23 53°07'30"N 006°35'25"E EH512 53°11'15"N 006°43'23"E	MSA BASED ON EEL VOR/DME
ACFT CAT	CAT I Press Alt	GP INOP MAPT: THR	CIRCLING*			
A	161 (148)	430 (420)	450 (430)			
B	174 (161)		520 (500)			
C	184 (171)		620 (600)			
D	197 (184)		840 (830)			

CEILING AND VISIBILITY MINIMA				BEARINGS ARE MAGNETIC DISTANCES IN NM ALTITUDES AND ELEVATIONS IN FEET			
TAKE-OFF	DAY:	NA	NIGHT:	NA			
LANDING	DAY:	NA	NIGHT:	NA			

