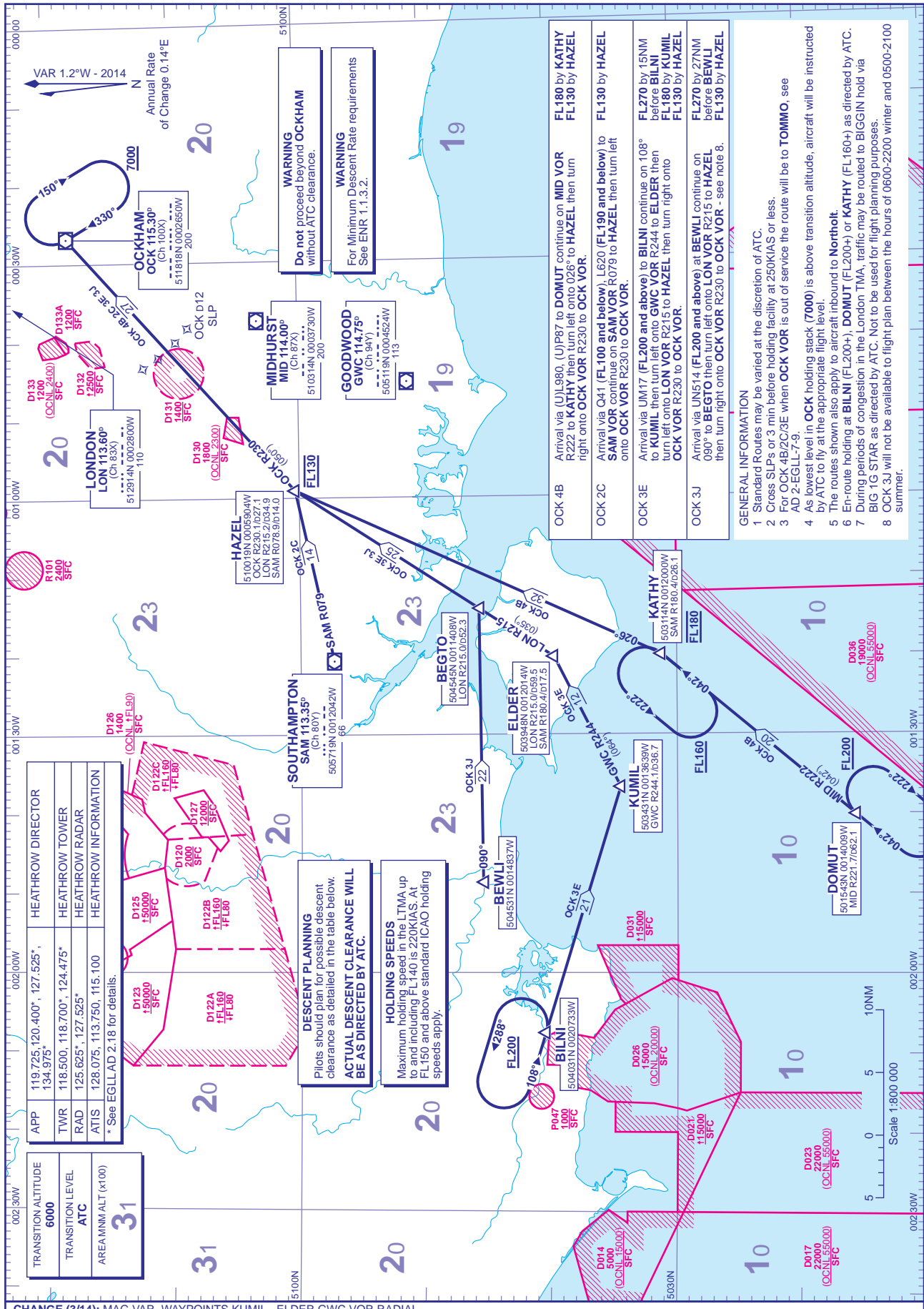


**STANDARD ARRIVAL CHART - INSTRUMENT (STAR) - ICAO**

DISTANCES IN NAUTICAL MILES  
BEARINGS, TRACKS AND RADIALS ARE MAGNETIC  
ALTITUDES AND ELEVATIONS ARE IN FEET

**LONDON HEATHROW via OCKHAM (South-West)**



- OCK 4B Arrival via (UL)980, (U)P87 to DOMUT continue on MID VOR R222 to KATHY then turn left onto 026° to HAZEL then turn right onto OCK VOR R230 to OCK VOR.
- OCK 2C Arrival via Q41 (FL100 and below), L620 (FL190 and below) to SAM VOR continue on SAM VOR R079 to HAZEL then turn left onto OCK VOR R230 to OCK VOR.
- OCK 3E Arrival via UM17 (FL200 and above) to BILNI continue on 108° before BILNI then turn left onto LON VOR R244 to ELDER then turn left onto LON VOR R215 to HAZEL then turn right onto OCK VOR R230 to OCK VOR.
- OCK 3J Arrival via UN514 (FL200 and above) at BEWLI continue on 090° to BEGTO then turn left onto LON VOR R215 to HAZEL then turn right onto OCK VOR R230 to OCK VOR - see note 8.

**GENERAL INFORMATION**

- 1 Standard Routes may be varied at the discretion of ATC.
- 2 Cross SLP's or 3 min before holding facility at 250KIAS or less.
- 3 For OCK 4B/2C/3E when OCK VOR is out of service the route will be TOMMO, see AD 2-EGLL-7-9.
- 4 As lowest level in OCK holding stack (7000) is above transition altitude, aircraft will be instructed by ATC to fly at the appropriate flight level.
- 5 The routes shown also apply to aircraft inbound to Northolt.
- 6 En-route holding at BILNI (FL200+), DOMUT (FL200+) or KATHY (FL160+) as directed by ATC.
- 7 During periods of congestion in the London TMA, traffic may be routed to BIGGIN hold via BIG 1G STAR as directed by ATC. Not to be used for flight planning purposes.
- 8 OCK 3J will not be available to flight plan between the hours of 0600-2200 winter and 0500-2100 summer.

**DESCENT PLANNING**  
Pilots should plan for possible descent clearance as detailed in the table below.  
**ACTUAL DESCENT CLEARANCE WILL BE AS DIRECTED BY ATC.**

**HOLDING SPEEDS**  
Maximum holding speed in the LTMA up to and including FL140 is 220KIAS. At FL150 and above standard ICAO holding speeds apply.

**CHANGE (3/14):** MAG VAR. WAYPOINTS KUMIL - ELDER GWC VOR RADIAL.  
AERO INFO DATE 10 DEC 13