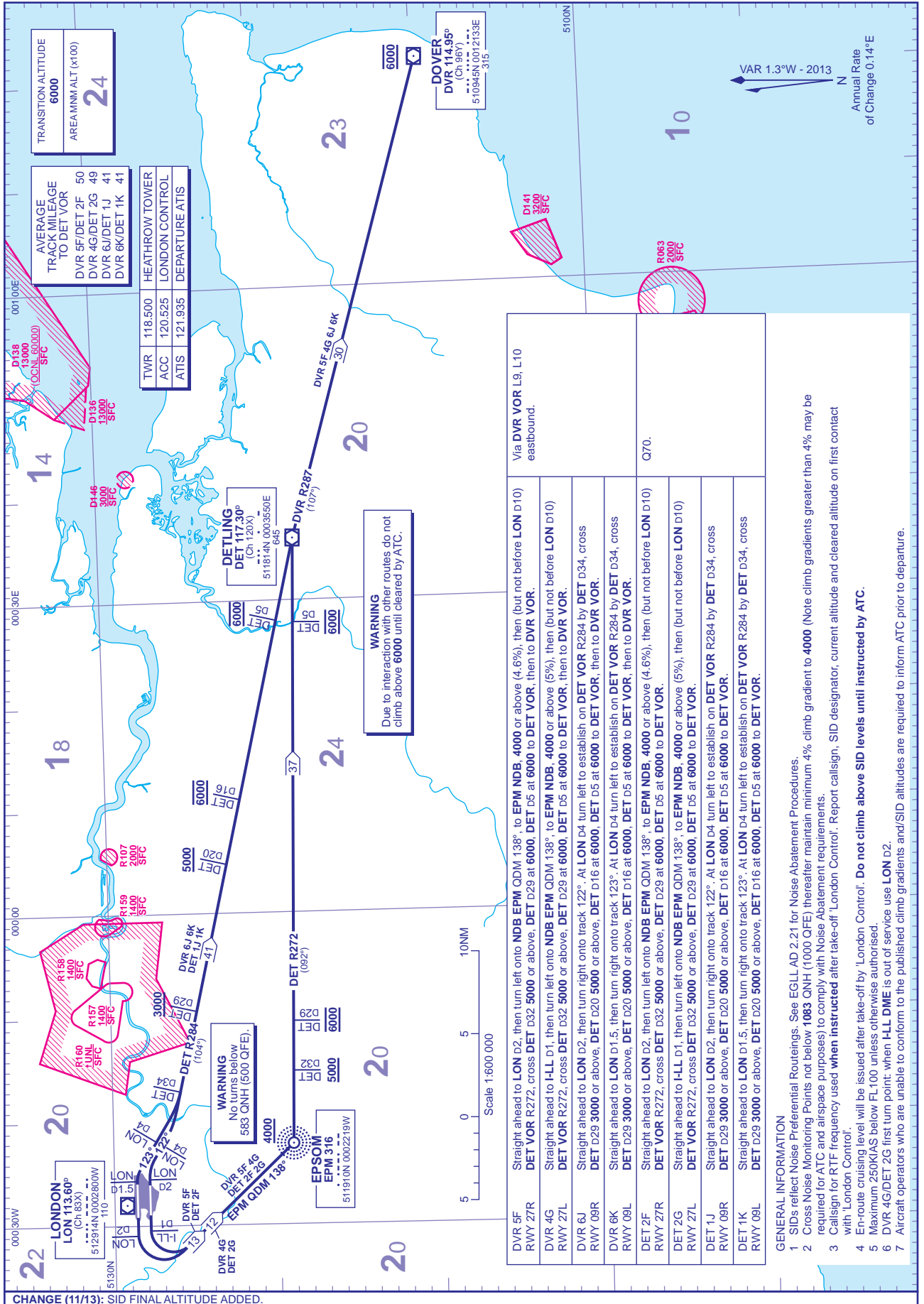


STANDARD DEPARTURE CHART - INSTRUMENT (SID) - ICAO

DISTANCES IN NAUTICAL MILES
BEARINGS, TRACKS AND RADIALS ARE MAGNETIC
ALTITUDES AND ELEVATIONS ARE IN FEET

**LONDON HEATHROW
DVR 5F 4G 6J 6K DET 2F 2G 1J 1K**



CHANGE (11/13): SID FINAL ALTITUDE ADDED.

AERO INFO DATE 29 JUL 13

DVR 5F RWY 27R	Straight ahead to LON D2, then turn left onto NDB EPM QDM 138°, to EPM NDB, 4000 or above (4.6%), then (but not before LON D10) DET VOR R272, cross DET D32 5000 or above, DET D29 at 6000, DET D5 at 6000 to DET VOR, then to DVR VOR.	Via DVR VOR L9, L10 eastbound.
DVR 4G RWY 27L	Straight ahead to HLL D1, then turn left onto NDB EPM QDM 138°, to EPM NDB, 4000 or above (5%), then (but not before LON D10) DET VOR R272, cross DET D32 5000 or above, DET D29 at 6000, DET D5 at 6000 to DET VOR, then to DVR VOR.	
DVR 6J RWY 09R	Straight ahead to LON D2, then turn right onto track 122°. At LON D4 turn left to establish on DET VOR R284 by DET D34, cross DET D29 3000 or above, DET D20 5000 or above, DET D16 at 6000, DET D5 at 6000 to DET VOR, then to DVR VOR.	
DVR 6K RWY 09L	Straight ahead to LON D1.5, then turn right onto track 123°. At LON D4 turn left to establish on DET VOR R284 by DET D34, cross DET D29 3000 or above, DET D20 5000 or above, DET D16 at 6000, DET D5 at 6000 to DET VOR, then to DVR VOR.	
DET 2F RWY 27R	Straight ahead to LON D2, then turn left onto NDB EPM QDM 138°, to EPM NDB, 4000 or above (4.6%), then (but not before LON D10) DET VOR R272, cross DET D32 5000 or above, DET D29 at 6000, DET D5 at 6000 to DET VOR.	Q70.
DET 2G RWY 27L	Straight ahead to HLL D1, then turn left onto NDB EPM QDM 138°, to EPM NDB, 4000 or above (5%), then (but not before LON D10) DET VOR R272, cross DET D32 5000 or above, DET D29 at 6000, DET D5 at 6000 to DET VOR.	
DET 1J RWY 09R	Straight ahead to LON D2, then turn right onto track 122°. At LON D4 turn left to establish on DET VOR R284 by DET D34, cross DET D29 3000 or above, DET D20 5000 or above, DET D16 at 6000, DET D5 at 6000 to DET VOR.	
DET 1K RWY 09L	Straight ahead to LON D1.5, then turn right onto track 123°. At LON D4 turn left to establish on DET VOR R284 by DET D34, cross DET D29 3000 or above, DET D20 5000 or above, DET D16 at 6000, DET D5 at 6000 to DET VOR.	

GENERAL INFORMATION

- SIDs reflect Noise Preferential Routings. See EGLL AD 2.21 for Noise Abatement Procedures.
- Cross Noise Monitoring Points not below 1083 QNH (1000 QFE) thereafter maintain minimum 4% climb gradient to 4000 (Note climb gradients greater than 4% may be required for ATC and airspace purposes) to comply with Noise Abatement requirements.
- Call sign for RTF frequency used when instructed after take-off: London Control. Report call sign, SID designator, current altitude and cleared altitude on first contact with 'London Control'.
- En-route cruising level will be issued after take-off by 'London Control'. Do not climb above SID levels until instructed by ATC.
- Maximum 250KIAS below FL100 unless otherwise authorised.
- DVR 4G/DET 2G first turn point: when HLL DME is out of service use LON D2.
- Aircraft operators who are unable to conform to the published climb gradients and/SID altitudes are required to inform ATC prior to departure.