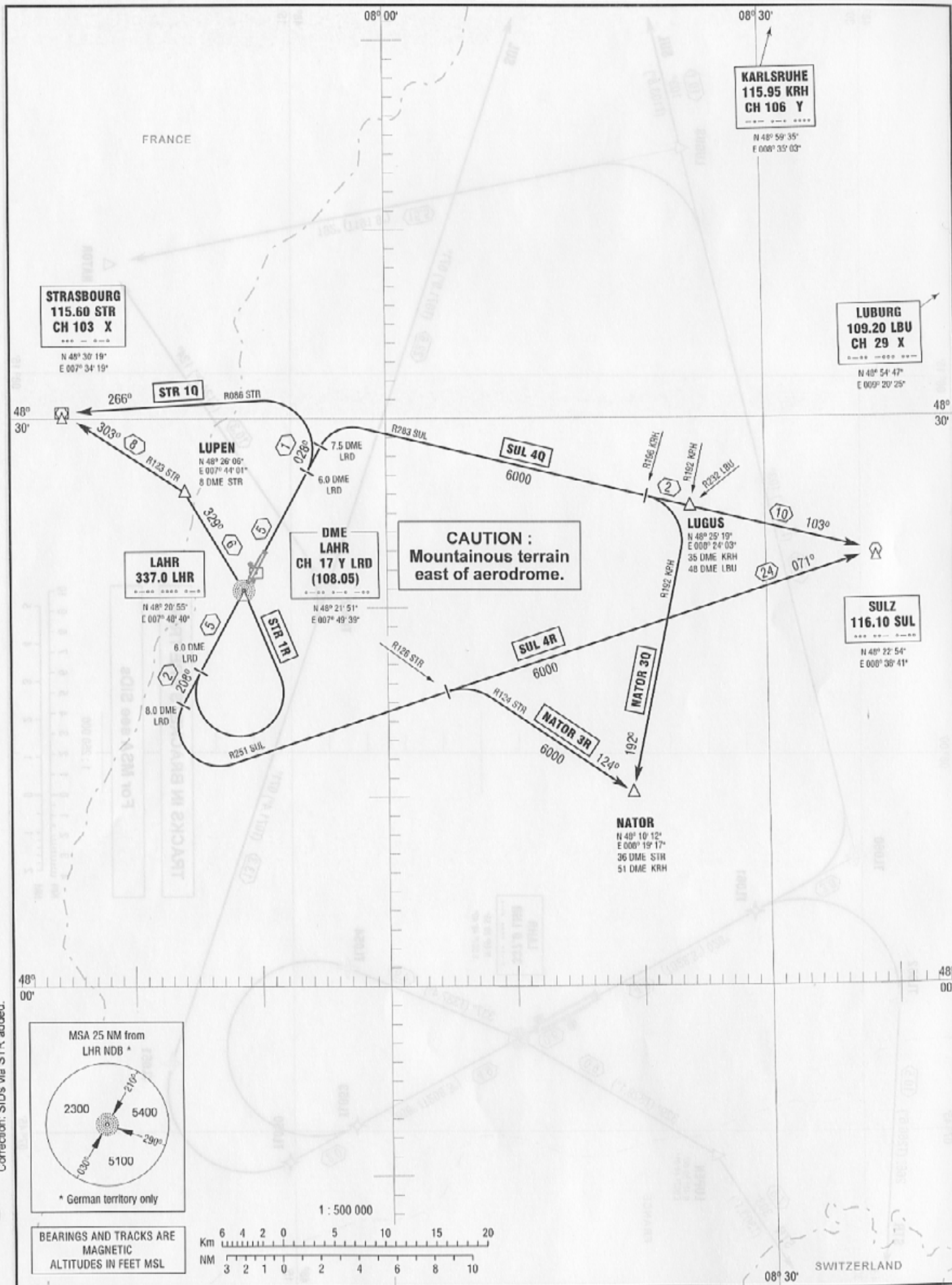


STANDARD DEPARTURE
CHART - INSTRUMENT
(SID)

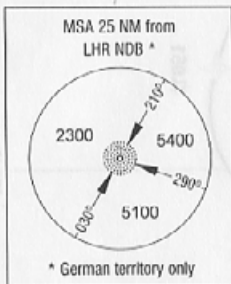
TRANSITION
ALTITUDE 5000
VAR 0°

INFO 125.175
STRASBOURG RADAR 119.450

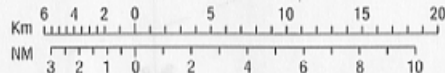
LAHR
RWY 03/21



Correction: SIDs via STR added.



BEARINGS AND TRACKS ARE
MAGNETIC
ALTITUDES IN FEET MSL



STANDARD DEPARTURE
ROUTES – INSTRUMENT
(SID)

LAHR
RWY 03/21

Designator	Route	After Take-Off		Remarks
		Climb to	Contact	
1	2	3	4	5
RWY 03				
NATOR 3Q	NATOR THREE QUEBEC On track 028° LHR to 7.5 DME LRD, RT, on R283 SUL to LUGUS, when crossing R196 KRH, RT, on R192 KRH to NATOR (Δ). Climb with 4,7% (286 ft/NM) or more until passing 3800 GPS/FMS RNAV: [A1000+] - TL060[R] - LUGUS[R] - NATOR.	6000 ft	Strasbourg Radar 119.450	
STR 1Q	STRASBOURG ONE QUEBEC On track 028° LHR to 6.0 DME LRD, LT, on R086 STR to STR (Δ). Climb with 4,7% (286 ft/NM) or more until passing 3800 GPS/FMS RNAV: [A1000+] - TL061[L] - TL062 - STR.			Operational PDG 7.7% (468 ft/NM) or more until passing 5000 due to glider flying at Neuhof.
SUL 4Q	SULZ FOUR QUEBEC On track 028° LHR to 7.5 DME LRD, RT, on R283 SUL to SUL (Δ). Climb with 4,7% (286 ft/NM) or more until passing 3800 GPS/FMS RNAV: [A1000+] - TL060[R] - SUL.			
RWY 21				
NATOR 3R	NATOR THREE ROMEO On track 208° via LHR to 8.0 DME LRD, LT, on R251 SUL, when crossing R126 STR, RT, on R124 STR to NATOR (Δ). GPS/FMS RNAV: LHR[A1000+] - TL050[L] - TL051 - TL052[R] - NATOR.	6000 ft	Strasbourg Radar 119.450	Not to be used during activity of NLFS.
STR 1R	STRASBOURG ONE ROMEO On track 208° via LHR to 6.0 DME LRD, LT, to LHR (Δ), on track 329° LHR to LUPEN, on R123 STR to STR (Δ). GPS/FMS RNAV: LHR[A1000+] - TL053[L] - TL054 - LHR[L] - LUPEN[L] - STR.			1. Not to be used during activity of NLFS. 2. Operational PDG 5.4% (328 ft/NM) or more until passing 5000 due to glider flying at Neuhof.
SUL 4R	SULZ FOUR ROMEO On track 208° via LHR to 8.0 DME LRD, LT, on R251 SUL to SUL (Δ). GPS/FMS RNAV: LHR[A1000+] - TL050[L] - TL051 - SUL.			Not to be used during activity of NLFS.
(Sample: TL050 fly-over way point)				
<div style="border: 1px solid black; padding: 5px; display: inline-block;"> Contact Strasbourg Radar immediately after take-off! </div>				