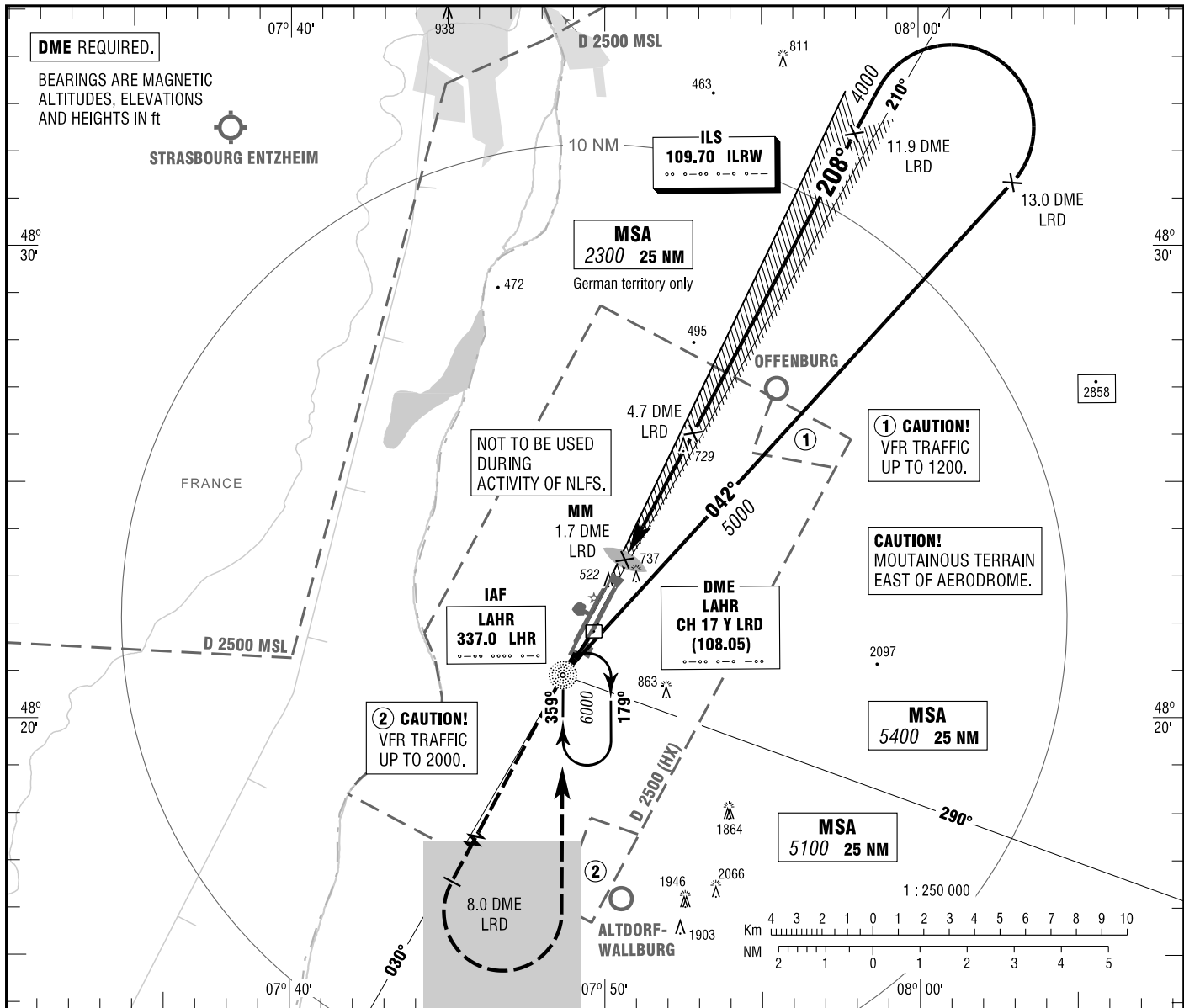


LAHR
ILS Y or LOC Y
RWY 21

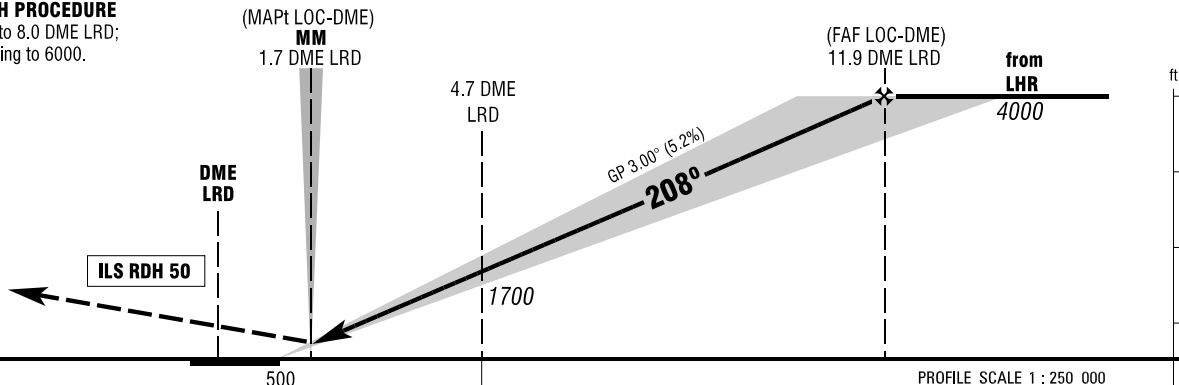
STRASBOURG RADAR 119.450
TOWER 125.175

ELEV 511
OCH RELATED TO
THR 21 ELEV 500 VAR 1° E

INSTRUMENT
APPROACH
CHART - ICAO



MISSED APPROACH PROCEDURE
Climb straight ahead to 8.0 DME LRD;
LT to LHR NDB climbing to 6000.



OCA (OCH)	A	B	C	D	D _L
ILS-DME CAT I	653 (153)	663 (163)	673 (173)	683 (183)	
LOC-DME	980 (480)	980 (480)	980 (480)	980 (480)	

DME LRD	3	4	5	6	7	8	9	10	11
DIST THR	1.9	2.9	3.9	4.9	5.9	6.9	7.9	8.9	9.9
ALTITUDE	1160	1480	1800	2120	2430	2750	3070	3390	3710

LOC-DME: Timing not authorized for defining the MAPt.

GS	kt	80	100	120	140	160	180
4.7 DME LRD - MAPt (3.0 NM)	MIN:SEC	2:15	1:48	1:30	1:17	1:08	1:00
Rate of descent (5.2%)	ft / MIN	420	530	640	740	850	960

Correction: Note.